

# PRIME DAILY

June 4, 2026



### U.S. Markets Snap Record Run Amid Iran Tensions

U.S. equity markets ended a multi-session streak of record highs yesterday, as escalating U.S.–Iran hostilities curbed risk appetite. The Dow shed over 600 points, while the S&P 500 and Nasdaq Composite both pulled back from all-time highs set the prior session.

The S&P 500 declined 0.74% to close at 7,553, and the Nasdaq Composite fell 0.89% to 26,854. Rising oil prices, Middle East uncertainty, tech-sector dilution concerns, and mixed earnings reactions collectively weighed on sentiment, triggering a broad wave of profit-taking.

Alphabet — Google's parent — slipped after expanding its AI infrastructure equity offering to \$84.75 billion — up from an initial \$80 billion — including a \$10 billion private placement with Berkshire Hathaway. Investors raised concerns about shareholder dilution and the near-term cash flow impact of heavy AI and cloud spending.

Treasury yields rose across the curve, with the 10-year note climbing to nearly 4.50%. The move was driven by ADP private payroll data showing the strongest job growth since early 2025, alongside fears that elevated energy costs could keep inflation persistently high.

Bitcoin fell for a fourth consecutive session, at its lowest level since February. U.S. spot Bitcoin ETFs recorded their largest monthly net outflows of the year in May, with redemptions continuing into early June. The broader crypto retreat reflects a rotation into AI-related equities and IPO plays.

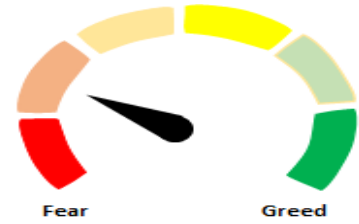
Geopolitical risk remained front of mind as Israeli Prime Minister Benjamin Netanyahu said that Israel and the United States were prepared to strike Iran again if necessary, reinforcing investor concern that prolonged conflict could keep energy prices and inflation elevated.

Asian markets also retreated. Japan's Nikkei 225 dropped 1.74% — reversing the prior session's record high — while the Topix declined 1.09%. South Korea's Kospi fell 1.25%, though the small-cap Kosdaq surged 3.83% as trading resumed following a public holiday.

The Indian rupee extended its losing streak for the second consecutive session yesterday, depreciating by 44 paise to close at 95.70 against the US dollar. The currency remained under pressure due to persistent capital outflows, concerns over US President Donald Trump's tariff proposals, and rising crude oil prices amid escalating geopolitical tensions in the Middle East.

In Indian markets, buying interest emerged in the second half of yesterday's session, triggering a sharp intraday recovery of over 300 points from intraday lows. The Nifty ultimately closed at 23,405, down 78 points. Yesterday's low of 23,151 is likely to serve as a crucial support level. 23,800 is the key resistance zone to watch on the upside.

**Indian markets are poised to open subdued on weak global cues.**



Global Equity Indices			
	Close	Abs. Change	% Change
Indian Indices			
Sensex	74,346	-303.7 ▼	-0.41%
Nifty	23,394	-89.8 ▼	-0.38%
Midcap	60,680	-262.4 ▼	-0.43%
Small cap	18,027	-25.7 ▼	-0.14%
US Indices			
Dow Jones	50,687	-620.7 ▼	-1.21%
S&P 500	7,554	-56.1 ▼	-0.74%
Nasdaq	26,854	-239.9 ▼	-0.89%
European Indices			
FTSE	10,332	-41.2 ▼	-0.40%
DAX	24,796	-328.2 ▼	-1.31%
CAC	8,150	-58.7 ▼	-0.71%
Asian Indices			
Shanghai	4,084	8.9 ▲	0.22%
Hang Seng	25,633	-405.1 ▼	-1.58%
Nikkei	67,639	904.8 ▲	1.34%

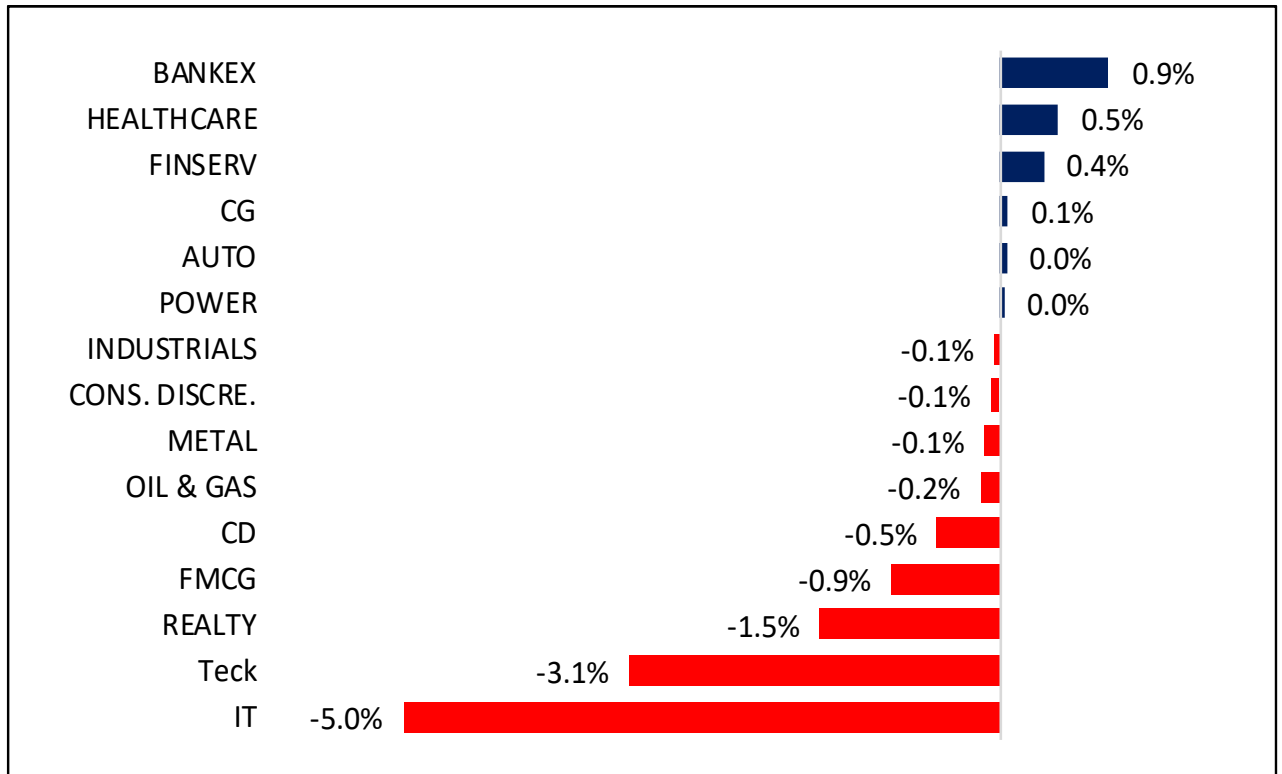
Indices Futures			
	Close	Abs. Change	% Change
IFSC Nifty			
IFSC Nifty	23,333	-6.5 ▼	-0.02%
US Indices			
Dow Jones	50,770	-33.0 ▼	-0.06%
S&P 500	7,535	-37.0 ▼	-0.49%
Nasdaq	30,410	-223.3 ▼	-0.73%
European Indices			
FTSE	10,316	15.1 ▲	0.15%
DAX	24,743	-96.0 ▼	-0.39%
Asian Indices			
Shanghai	4,887	-16.0 ▼	-0.33%
Hang Seng	25,198	-125.0 ▼	-0.49%
Nikkei	67,168	-897.5 ▼	-1.32%

## Nifty50 Index Contributors

Top Five (Positive Contributors)		
Stock	Points	% Change
ICICIBANK	26.3	0.11
HDFCBANK	15.8	0.07
SBIN	13.5	0.06
KOTAKBANK	5.5	0.02
APOLLOHOSP	4.7	0.02

Bottom Five (Negative Contributors)		
Stock	Points	% Change
TCS	-44.75	-0.19
INFY	-38.38	-0.16
HCLTECH	-15.28	-0.07
TECHM	-14.13	-0.06
LT	-13.82	-0.06

## BSE Sectoral Leaders & Laggards

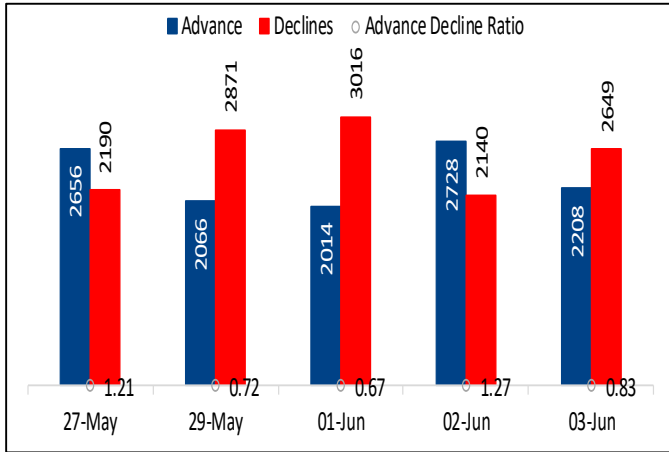


## Nifty50 Index Top Pops & Drops

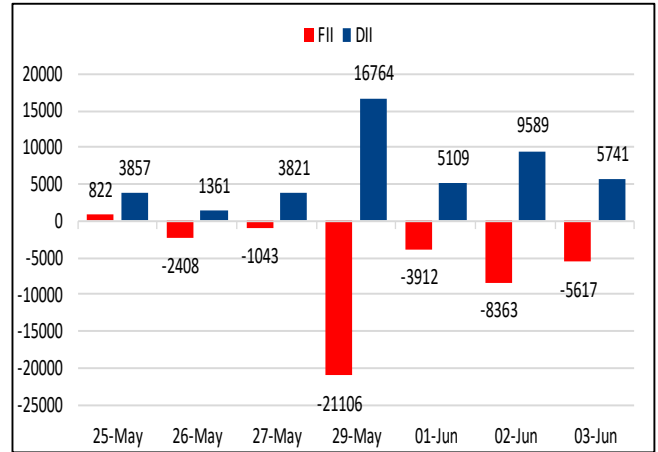
Nifty50 Top Five Gainers			
Symbol	LTP	% Change	Volume
APOLLOHOSP	8290.5	2.48	724,687
TMPV	398.2	2.04	8,638,483
MAXHEALTH	965.6	1.78	2,609,191
SBIN	970.5	1.44	27,947,005
ICICIBANK	1242.0	1.26	13,934,754

Nifty50 Top Five Losers			
Symbol	LTP	% Change	Volume
TCS	2241.7	-8.39	15,660,062
TECHM	1472.3	-6.31	3,493,572
HCLTECH	1179.0	-5.19	4,800,922
INFY	1222.6	-3.79	18,534,303
WIPRO	204.1	-2.74	62,282,204

### BSE Advance & Declines



### Institutional Activities (Rs Cr)



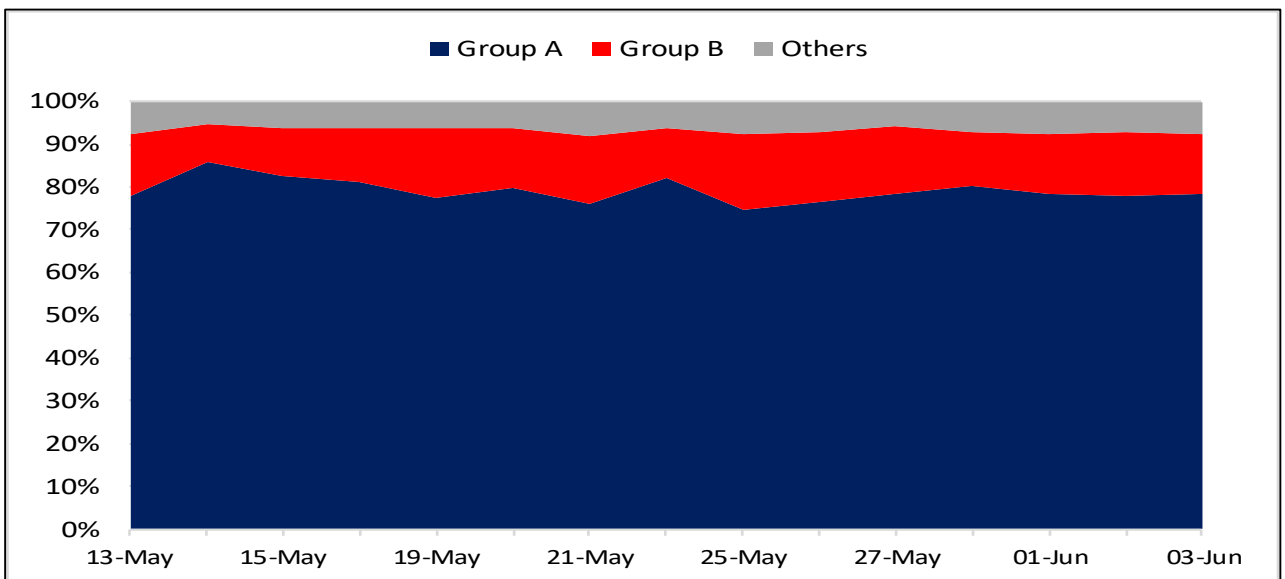
### 52 Week High Stocks

	03-Jun-26	02-Jun-26
BSE Universe	146	145
<b>BSE Group A Stocks Hitting 52 Week High</b>		
Stocks	Price	52 Week High
ACMESOLAR	328.8	337.5
APOLLO	407.7	447.0
HFCL	199.9	199.9
ICIL	343.3	360.6
IFCI	80.5	81.9



### 52 Week Low Stocks

	03-Jun-26	02-Jun-26
BSE Universe	91	111
<b>BSE Group A Stocks Hitting 52 Week Low</b>		
Stocks	Price	52 Week Low
BAJAJELEC	309.0	301.4
BRITANNIA	5,063.1	5,050.0
ICICIPRULI	477.2	473.3
ITC	277.0	275.3
RENUKA	21.5	21.1

### BSE Cash Market Turnover Participant-wise



## News Highly Sensitive to Stock Price

Impact	Stock	News
	<b>Capacite Infra</b>	<p>Capacite Infraprojects said that it has received letter of intent (LOI) from Ten X Realty East, a subsidiary of Raymond Realty, for a total contract value of Rs 589 crore.</p>
	<b>Granules India</b>	<p>The company announced that its wholly owned subsidiary, Granules Pharmaceuticals Inc. (GPI), has received an Establishment Inspection Report (EIR) from the US Food and Drug Administration (USFDA) for its facility in Chantilly, Virginia. The USFDA classified the inspection as Voluntary Action Indicated (VAI), indicating that while certain observations were made, they do not warrant any regulatory or enforcement action.</p>

Stock	News
<b>Varroc Engineering</b>	<p>Varroc Engineering has entered into a Strategic Cooperation arrangement with Suzhou Tolly Optronics Co.(Tolly) for establishing a strategic partnership for select programs to localize and supply next-generation digital cockpit and display solutions for global passenger and commercial vehicle platforms.</p>
<b>ICICI Prudential AMC</b>	<p>The Securities and Exchange Board of India (Sebi) has sent an administrative warning to ICICI Prudential Asset Management Company (AMC) with respect to an investor complaint in one of its schemes. The complaint pertained to ICICI Prudential Strategic Alpha Fund, an alternative investment fund (AIF) of the AMC.</p>
<b>TCS</b>	<p>Tata Consultancy Services (TCS) announced the expansion of its long-standing partnership with Euroclear Group to drive the next phase of transformation for Sweden's Central Securities Depository (CSD). As part of this initiative, Euroclear Sweden will deploy TCS BaNCS™ for Market Infrastructure and Quartz™, TCS' advanced digital solutions, to build a resilient, future-ready, and scalable CSD platform aligned to evolving European market standards.</p>
<b>LTM</b>	<p>LTM launches its new Managed Secure Service Edge (SSE) solution at Cisco Live 2026. Built directly upon Cisco Secure Access- Cisco's dedicated SSE solution, this offering is designed for cloud-first and hybrid work environments. By combining the robust security of Cisco Secure Access with LTM's AI-powered managed services, the solution secures access to applications and enables secure use of AI applications and models for the modern enterprise.</p>
<b>Infosys</b>	<p>Infosys unveiled a new suite of AI-powered fan experiences in partnership with the Lawn Tennis Association (LTA), the governing body of tennis in Great Britain. Introduced across the LTA grass court season, these experiences build on the ongoing strategic collaboration between Infosys and LTA and reflect their shared commitment to advancing innovation and using AI responsibly. These enhancements will help deliver more engaging, richer, and connected experiences for tennis fans while preserving the integrity and traditions of the game.</p>
<b>Suzlon Energy</b>	<p>The company has iterated its ambitious plans of establishing "Suzlon 2.0". By FY31, the company aims to expand annual renewable energy sales fourfold to 10 GW, grow its order book to 15 GW, and scale its Asset Under Management (AUM) fourfold to 70 GW, building a strong annuity-led business. This growth will be supported by a ~40% market share in India's wind market, 3 GW export order intake, and a shift towards a higher-value mix by targeting a ~60% volume contribution from RE DevCo.</p>

Stock	News
<b>BR Goyal</b>	<p>B.R.Goyal Infrastructure has received a work order from the National Highways Authority of India (NHAI) for the engagement of user fee agency through E-Tender for Kathpur Fee Plaza at km 472.000 of Himmat Nagar-Chiloda Section from km 443.000 to km 495.000 of the NH-8 in the State of Gujarat. The accepted value of the said work order is Rs. 118.02 crore.</p>
<b>Borosil Renewables</b>	<p>The Ministry of Finance (Department of Revenue) has recommended continued imposition of definitive countervailing duty ('CVD') on the imports of solar glass (Textured Tempered Glass) from Malaysia, for a period of five years from the date of publication.</p>
<b>Powermech</b>	<p>Power Mech Projects said that it has received a KPI-based Operations &amp; Maintenance contract from Adani Infrastructure Management Services for a 2x300 MW thermal power plant at Butibori, Maharashtra. The total contract value is Rs 266.26 crore .</p>
<b>Aurobindo Pharma</b>	<p>Aurobindo Pharma marked a significant milestone with the inauguration of TheraNym, one of India's largest dedicated biologics contract manufacturing organisations (CMO). The TheraNym Biologics facility was then inaugurated by Shri D. Sridhar Babu, Hon'ble Minister for IT, Industries &amp; Commerce and Legislative Affairs of Telangana, and Shri Damodar Raja Narasimha, Minister for Science and Technology of Telangana — a gesture that reaffirms the Government's unwavering commitment to positioning Telangana as a global centre of excellence in pharmaceuticals and biotechnology. TheraNym represents Aurobindo Pharma's bold and strategic foray into biologics contract manufacturing — a segment that is growing worldwide and is increasingly vital to meeting global demand for biologic therapies.</p>
<b>Gujarat Themis Biosyn</b>	<p>Board is scheduled to be held on Saturday, 6th June, 2026 to consider and evaluate proposals for raising funds by way of issue of equity shares/securities through qualified institutions placement or preferential allotment or any other methods/modes.</p>
<b>ideaForge Technology</b>	<p>Board approved fund raising of up to Rs 500 crore for raising funds by way of issue of equity shares/securities through qualified institutions placement or preferential allotment or fully or partly convertible debentures, non-convertible debentures along with warrants, any other equity based securities.</p>

Stock	News
<b>Texmaco Rail</b>	<p>Touax Group, Texmaco Rail &amp; Engineering Limited, and TrinityRail Global, Inc., announced that Trinity was joining Touax Group and Texmaco Rail &amp; Engineering Limited in its world class railcar leasing joint venture named Touax Texmaco Railcar Leasing Pvt. Ltd. (TTRL). Trinity is taking a 32% participation in this first-of-its-kind global tripartite partnership to solidify TTRL's market position, grow and expand the joint venture, and continue to provide leasing and asset solutions to its customers in the high growth Indian market.</p>
<b>BHEL</b>	<p>Bharat Heavy Electricals Limited has signed a Contract Agreement with M/s Dangote Petroleum Refinery &amp; Petrochemicals Free Zone Enterprise, Nigeria for Design, Manufacturing, Supply and Supervision of Erection &amp; Commissioning of 8 Nos. Gas Turbine Generator Package for their Petroleum Refinery and Polypropylene Plant in Dangote Industries Free Zone, Nigeria. The total order is valued at Rs 2000-2500 crore and to be completed over the next 26 months.</p>

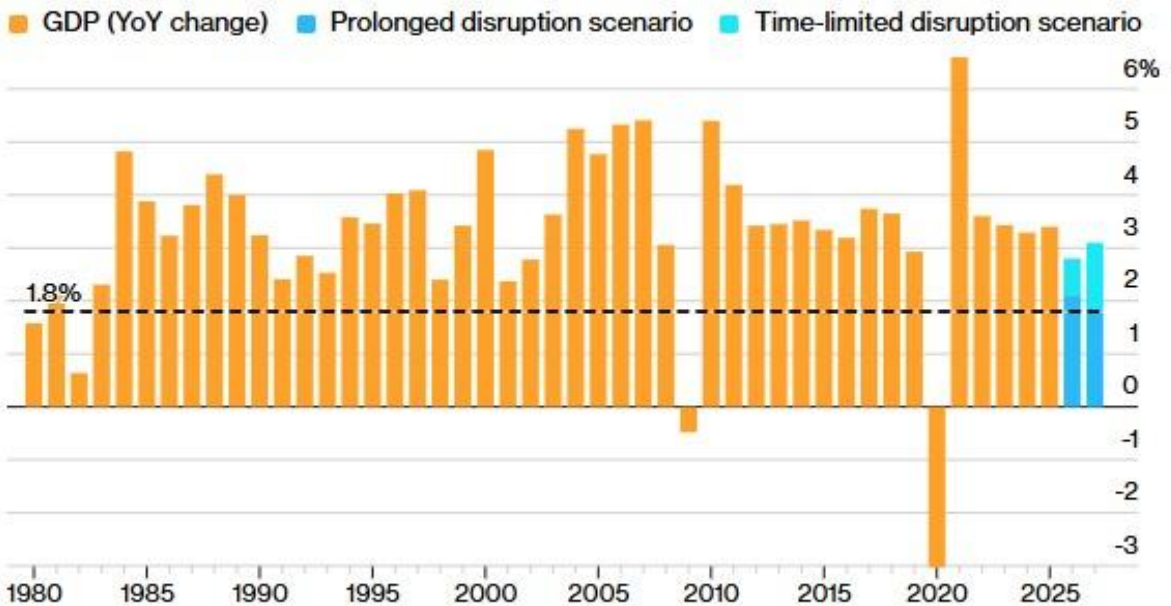
## Chart with Interesting Observations

### OECD Warns Prolonged Iran Conflict Could Trigger Global Economic Slowdown

- The OECD has warned of a much weaker global economic outlook if the conflict involving Iran persists through 2027 and continues to disrupt energy supplies from the Middle East. In its baseline forecast, where tensions gradually ease, the OECD expects global growth to slow but remain resilient. However, in a prolonged-conflict scenario, sustained disruptions to oil and gas exports could trigger a sharp rise in energy prices, higher inflation, weaker consumer spending, and tighter financial conditions. Under this downside scenario, global economic growth could fall to levels typically associated with major international crises, increasing the risk of recessions in several countries.
- The OECD argues that the economic damage would extend beyond energy markets. Higher fuel costs would raise production and transportation expenses across industries, while shortages of critical commodities linked to the region could further strain supply chains. Inflationary pressures would likely force central banks to keep interest rates elevated for longer, weighing on investment and household demand.
- The broader message of the report is that a prolonged Iran-related conflict could create a stagflationary environment—characterized by slower growth and higher inflation—underscoring the importance of energy security and diversification of supply sources.

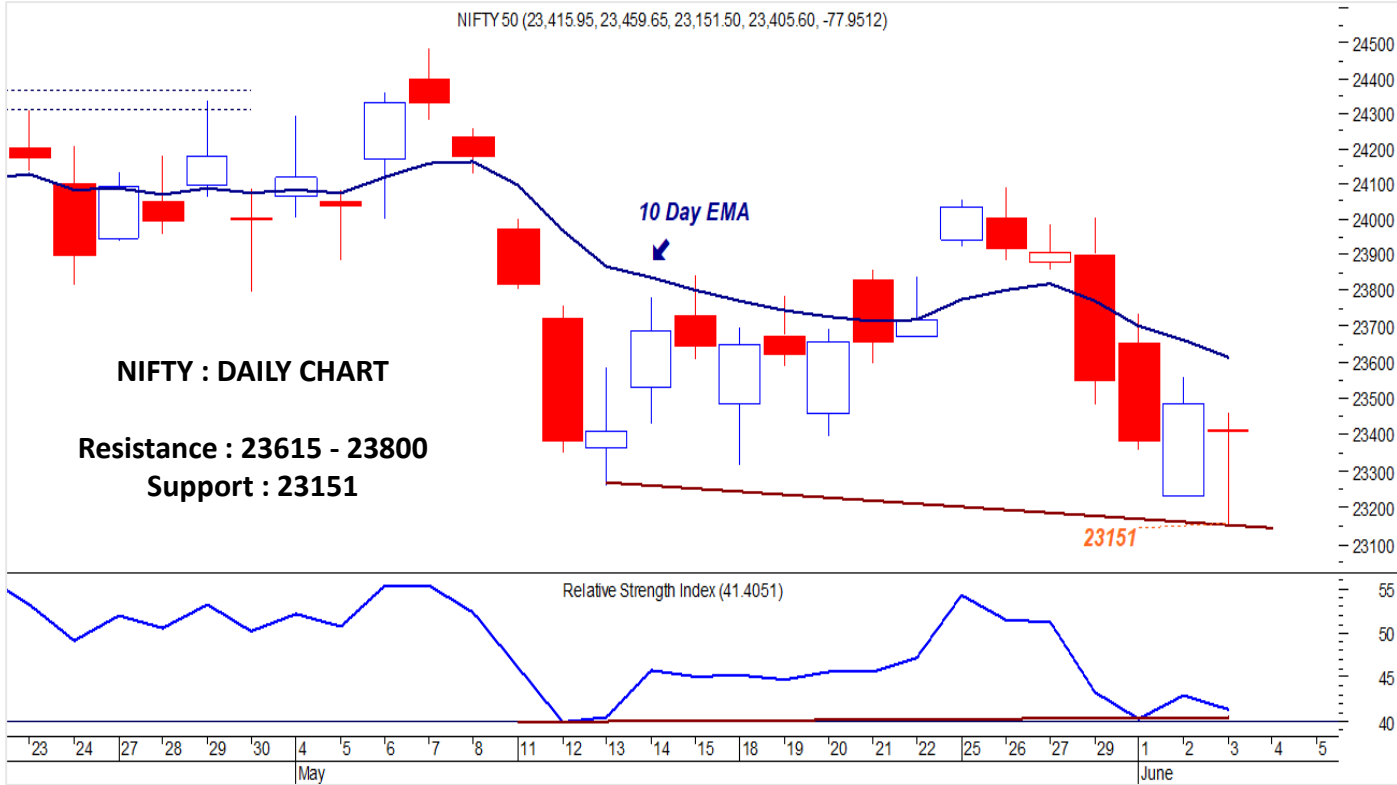
### Global Growth

Growth could tumble to 1.8% if Iran war disruption persists into 2027

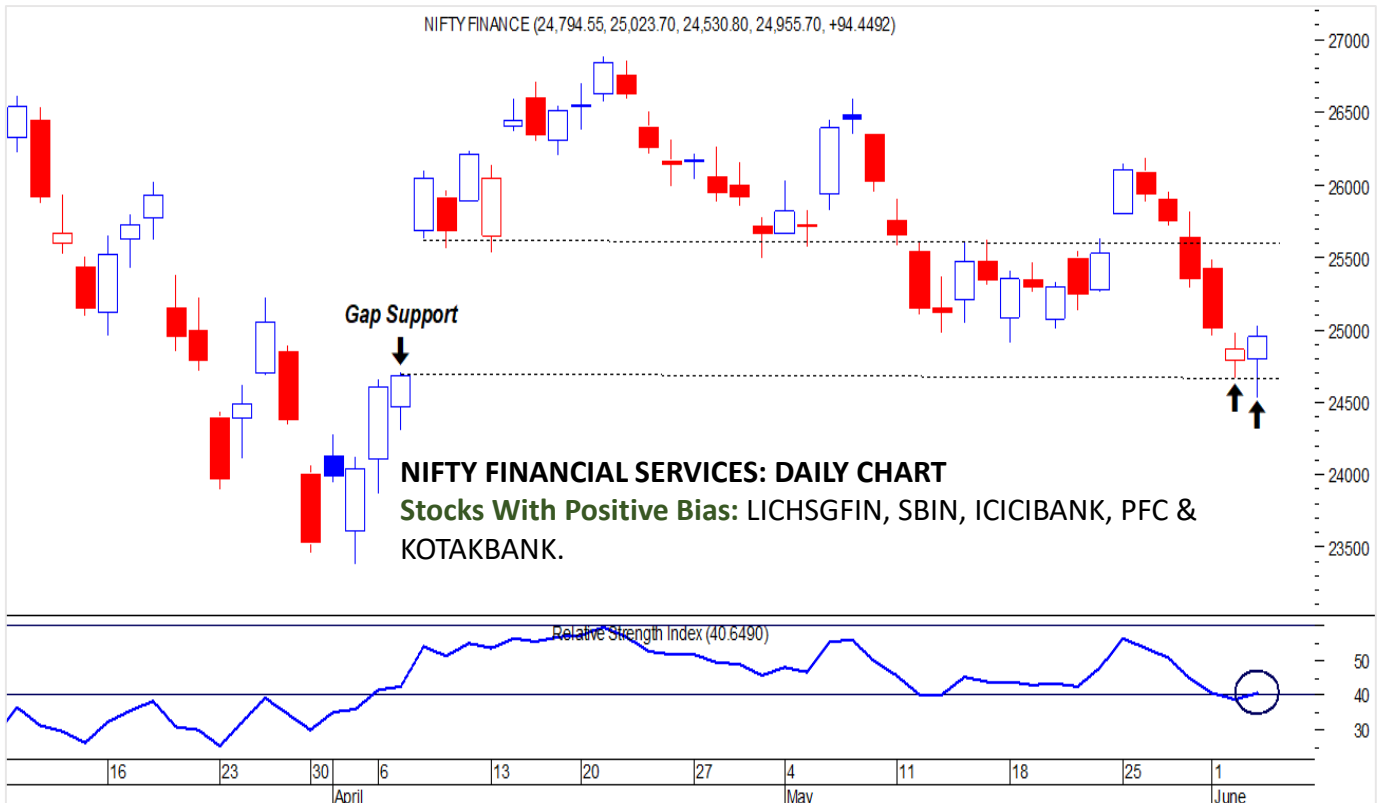


Source: Organization for Economic Cooperation and Development

**NIFTY : Nifty Holds Above Key Support at 23,151, While 23,800 Remains a Major Resistance; Maintain a Bullish Stance with 23,151 as the Stop-Loss.**



**NIFTY FIN. SERV. INDEX: Back-to-Back Support at Gap Zone with a Bullish Reversal Candle Pattern Signals Strengthening Momentum.**



## F&O Highlights

### PUT WRITING WAS SEEN AT 23300 – 23000 LEVELS

Create longs with the SL of 23200 levels.

- Dalal Street witnessed a highly volatile session as aggressive first-half selling dragged the Nifty to an intraday low of 23,151, down 332 points from its previous close. However, a powerful late-afternoon surge triggered a sharp 300-point recovery from the day's lows, allowing the index to cut most of its losses and finish down just 78 points at 23,405.
- Short Build-Up was seen in the Nifty Futures where Open Interest rose by 9.16% with Nifty falling by 0.33%.
- Short Covering was seen in the Bank Nifty Futures where Open Interest fell by 0.29% with Bank Nifty rising by 0.88%.
- Nifty Open Interest Put Call ratio fell to 1.02 levels from 1.03 levels.
- Amongst the Nifty options (09-Jun Expiry), Call writing is seen at 23500-23600 levels, indicating Nifty is likely to find strong resistance in the vicinity of 23500-23600 levels. On the lower side, an immediate support is placed in the vicinity of 23300-23000 levels where we have seen Put writing.
- Short build-up was seen by FII's in the Index Futures segment where they net sold worth 4,420 cr with their Open Interest going up by 31983 contracts.

Index	Expected Trend	Prev. Close	Recommendations	Stop Loss	Target
NIFTY FUT	UP	23515.70	<b>BUY AROUND 23300</b>	<b>23200</b>	<b>23500</b>
BANK NIFTY FUT	UP	54517.40	<b>BUY AROUND 54200</b>	<b>53800</b>	<b>54800</b>

Nifty 50 Snapshot			
	03-Jun-26	02-Jun-26	% Chg.
Nifty Spot	23405.60	23483.55	-0.33
Nifty Futures	23515.70	23603.10	-0.37
Premium/ (Discount)	110.10	119.55	N.A.
Open Interest (OI)	2.10	1.92	9.16
Nifty PCR	1.02	1.03	-1.65

Bank Nifty Snapshot			
	03-Jun-26	02-Jun-26	% Chg.
Bank Nifty Spot	54185.95	53714.65	0.88
Bank Nifty Futures	54517.40	54148.00	0.68
Premium/ (Discount)	331.45	433.35	N.A.
Open Interest (OI)	0.27	0.27	-0.29
Bank Nifty PCR	0.87	0.83	5.62

Nifty Options Highest OI (Weekly)			
CALL		PUT	
Strike Price	Open Interest (Contracts)	Strike Price	Open Interest (Contracts)
24000	131867	23300	98232

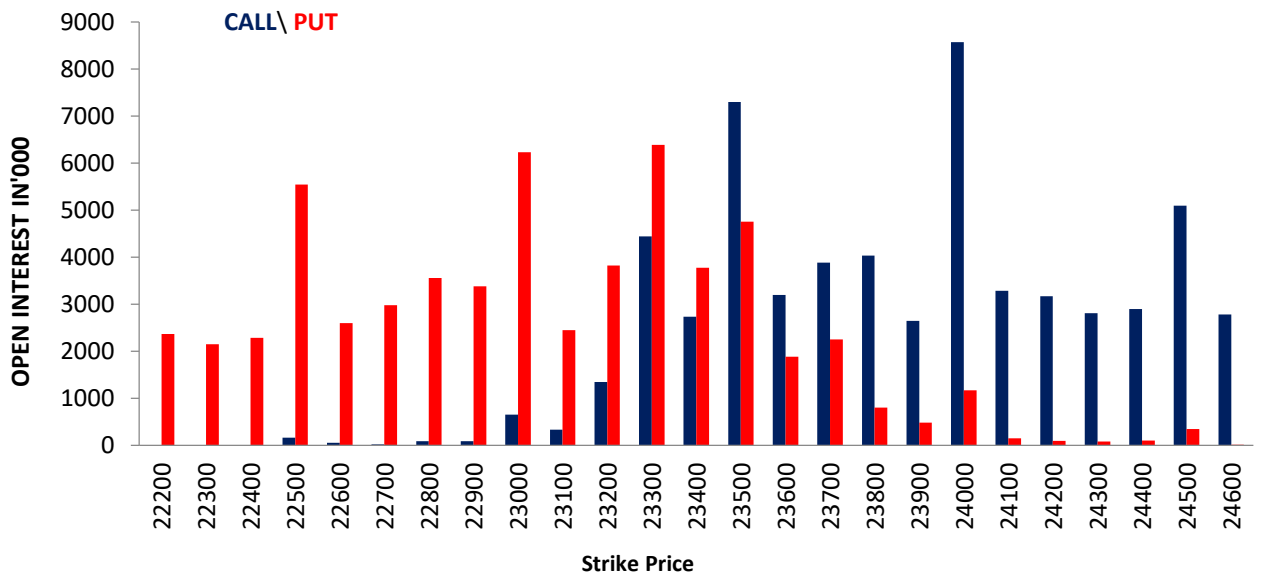
### FII Activity on 03 June 2026

	BUY		SELL		NET (Rs Cr)	OPEN INTEREST	
	Contracts	Value (Rs Cr)	Contracts	Value (Rs Cr)		Contracts	Value (Rs Cr)
<b>Index Futures</b>	<b>30303</b>	<b>4699</b>	<b>59460</b>	<b>9119</b>	<b>-4420</b>	<b>311155</b>	<b>48525</b>
<b>Nifty Futures</b>	22029	3351	51312	7796	<b>-4445</b>	237185	36272
<b>Bank Nifty Fut.</b>	7807	1269	7374	1193	<b>76</b>	53848	8809
<b>Index Options</b>	<b>5732201</b>	<b>880165</b>	<b>5660862</b>	<b>868753</b>	<b>11412</b>	<b>2493813</b>	<b>385016</b>
<b>Nifty Options</b>	5396713	824361	5336561	814979	<b>9383</b>	1971397	299921
<b>Bank Nifty Opt.</b>	295154	48946	283261	46759	<b>2187</b>	481329	78244
<b>Stock Futures</b>	<b>358715</b>	<b>22280</b>	<b>402712</b>	<b>24014</b>	<b>-1734</b>	<b>7283224</b>	<b>450336</b>
<b>Stock Options</b>	<b>400800</b>	<b>24952</b>	<b>390599</b>	<b>24345</b>	<b>608</b>	<b>695353</b>	<b>43115</b>

### FII's Open Interest (Contracts)

Date	Index Futures	Nifty Futures	Bank Nifty Futures	Index Options	Nifty Options	Bank Nifty Options	Stock Futures	Stock Options
03-Jun-26	<b>311155</b>	237185	53848	<b>2493813</b>	1971397	481329	<b>7283224</b>	<b>695353</b>
02-Jun-26	<b>279172</b>	206734	52181	<b>2139322</b>	1647707	452798	<b>7320239</b>	<b>605782</b>
<b>NET (CONTRACTS)</b>	<b>31983</b>	<b>30451</b>	<b>1667</b>	<b>354491</b>	<b>323690</b>	<b>28531</b>	<b>-37015</b>	<b>89571</b>

### Nifty Weekly (09 – June) Option Open Interest Distribution





Top Gainers OI Wise		
Company	Future OI (%)	Price (%)
NAM-INDIA	44.69	-1.11
GVT&D	27.12	3.84
LTM	11.27	-6.66
WIPRO	10.51	-2.74
KALYANKJIL	7.71	-0.03

Top Losers OI Wise		
Company	Future OI (%)	Price (%)
NHPC	-13.64	3.89
POLICYBZR	-8.24	-4.00
MAXHEALTH	-6.80	1.78
HYUNDAI	-4.79	-0.29
ANGELONE	-3.81	-2.31

Top Gainers Price Wise		
Company	Future OI (%)	Price (%)
IDEA	-0.15	4.87
NHPC	-13.64	3.89
GVT&D	27.12	3.84
MANKIND	1.44	3.07
DMART	-2.48	2.75

Top Losers Price Wise		
Company	Future OI (%)	Price (%)
TCS	6.51	-8.39
PERSISTENT	1.30	-6.82
LTM	11.27	-6.66
COFORGE	-0.58	-6.49
TECHM	-3.14	-6.31

Long Buildup		
Company	Future OI (%)	Price (%)
GVT&D	27.12	3.84
BSE	6.24	0.87
SOLARINDS	5.91	1.04
CANBK	4.35	2.15
GMRAIRPORT	4.02	0.66

Short Buildup		
Company	Future OI (%)	Price (%)
NAM-INDIA	44.69	-1.11
LTM	11.27	-6.66
WIPRO	10.51	-2.74
KALYANKJIL	7.71	-0.03
KFINTECH	6.69	-2.49

Long Unwinding		
Company	Future OI (%)	Price (%)
POLICYBZR	-8.24	-4.00
HYUNDAI	-4.79	-0.29
ANGELONE	-3.81	-2.31
EXIDEIND	-3.76	-1.80
TECHM	-3.14	-6.31

Short Covering		
Company	Future OI (%)	Price (%)
NHPC	-13.64	3.89
MAXHEALTH	-6.80	1.78
BLUESTARCO	-3.37	0.08
ONGC	-2.88	1.02
JUBLFOOD	-2.71	0.37

Securities In Ban For Trade – 03.06.2026	
No.	Company Name
1.	AMBER
2.	KAYNES

## Economic Calendar

Thursday	Friday	Monday	Tuesday	Wednesday
04 Jun	05 Jun	08 Jun	09 Jun	10 Jun
UK: Construction PMI, EU: Retail Sales US: Challenger Job Cuts, Initial & Conti. Claims	India: RBI Monetary Policy EU: GD US: Change in NFP	Japan: GDP, BoP Current Account balance	US: NFIB Busi. Optimism, Trade Balance, Existing Home Sales, AD Emp., Wholesale inventory China: Trade Balance	China: CPI US: MBA Mortgage, CPI, Core CPI, Fed Budget Balance

### Open Derivatives Trading Calls

NO	RECO DT	RECO	COMPANY NAME	BUY RANGE	CMP	SL	TARGET	UPSIDE %	VALID TILL
1	3-JUN-26	BUY	NIFTY JUNE FUT	23486-23430	23,490.0	23385	23686	0.8	30-JUN-26
2	3-JUN-26	SELL	MIDCAP NIFTY 30TH JUNE 14200 PUT OPTION	309	266.8	400	150	43.8	30-JUN-26
3	3-JUN-26	BUY	BANK NIFTY 30TH JUNE 55000 CALL OPTION	863.55	876.0	600	1300	48.4	30-JUN-26
4	25-MAY-26	BUY	BANK OF BARODA JUNE FUT	273.35-266	271.3	262	288	6.2	30-JUN-26
5	3-JUN-26	SELL	JIO FINANCE JUNE FUT	234.60-238	236.8	241	225	5.0	30-JUN-26
6	3-JUN-26	BUY	UNION BANK JUNE FUT	166.64-164	168.4	161	177	5.1	30-JUN-26
7	3-JUN-26	BUY	FEDERAL BANK JUN FUT	302.7-292.3	304.1	287	324	6.5	30-JUN-26
8	3-JUN-26	SELL	BHEL JUNE FUT	404.50-412	407.2	416	385	5.4	30-JUN-26

### Open Short-Term MTF Calls

NO.	RECO DT.	RECO	COMPANY NAME	BUY RANGE	CMP	Lower Band	SL	TARGET	UPSIDE %	VALID TILL
1	13-MAY-26	BUY	JINDAL STEEL & POWER	1252-1257	1211.3	1208	1189	1340	10.6	5-JUN-26
2	25-MAY-26	BUY	MOLD-TEK	707-701.55	706.45	680	665	750	6.2	8-JUN-26
3	26-MAY-26	BUY	BAJAJ HOUSING FINANCE	87-85	83.64	83.8	82.8	93	11.2	9-JUN-26
4	2-JUN-26	BUY	TANLA	533-539	528.3	517	507	569	7.7	16-JUN-26
5	2-JUN-26	BUY	JSW CEMENT	127.7-128.50	128.8	123.5	121.5	135.5	5.2	16-JUN-26
6	2-JUN-26	BUY	VAIBHAV GLOBAL	232-234.50	230.9	225	221	247	7.0	16-JUN-26
7	3-JUN-26	BUY	J&K BANK	147.20-148	148.65	140.5	138	158	6.3	17-JUN-26

### Open Positional MTF Calls

NO.	RECO DT.	RECO	COMPANY NAME	BUY RANGE	CMP	SL	TARGET 1	TARGET 2	UPSIDE %	VALID TILL
1	27-APR-26	BUY	TATA STEEL	213.80-215	211.9	201.0	229.0	239	12.8	18-JUN-26
2	14-MAY-26	BUY	MODEFENCE	100.95-102.50	99.1	95.5	107.0	110	11.0	13-JUL-26
3	19-MAY-26	BUY	SANDUR MANGANESE	225.90-230	226.9	206.0	248.0	271	19.5	18-JUL-26
4	19-MAY-26	BUY	PDSL	293-299	303.3	269.0	320.0	339	11.8	18-JUL-26
5	21-MAY-26	BUY	OBEROI REALTY	1663-1680	1637.4	1558.0	1795.0	1870	14.2	5-JUL-26
6	21-MAY-26	BUY	HDFCNIFBAN	55.60-55.23	55.6	52.5	59.0	62	11.5	19-AUG-26
7	26-MAY-26	BUY	CHAMBAL FERTILIZERS	475-484	461.3	438.0	518.0	550	19.2	24-AUG-26
8	26-MAY-26	BUY	TATA TECH	704-700.20	731.1	658.0	750.0	780	6.7	24-AUG-26

\*= 1st Target Achieved

### Open Derivative Strategy

NO.	RECO DT.	RECO	INDEX	RECO PRICE	MAX Profit	MAX LOSS	VALID TILL
1	25-MAY-26	Buy	NIFTY (09-JUNE) 24100 CALL	243	3380	3120	9-JUN-26
		Sell	NIFTY (09-JUNE) 24200 CALL	155			

NO.	RECO DT.	RECO	INDEX	RECO PRICE	MAX Profit	MAX LOSS	VALID TILL
2	2-Jun-26	Buy	BANK NIFTY (30-JUN) 53500 PUT	935	9300	5700	30-Jun-26
		Sell	BANK NIFTY (30-JUN) 53000 PUT	745			

**NSE 200 SUPPORT & RESISTANCE**

SYMBOL	CLOSE	PIVOT	SUPT 2	SUPT 1	RESI 1	RESI 2	52 W H	52 W L	30 D % CHG
360ONE	1072.5	1069.1	1032.7	1052.6	1089.0	1105.5	1273.8	906.1	0.38
ABB	7196.0	7175.3	7011.3	7103.7	7267.7	7339.3	7822.5	4637.5	-0.57
ABCAPITAL	348.8	347.4	338.1	343.4	352.7	356.7	376.0	221.1	0.91
ADANIENSOL	1493.1	1490.0	1403.0	1448.1	1535.1	1577.0	1578.5	744.9	7.27
ADANIENT	2925.6	2926.2	2849.3	2887.5	2964.4	3003.1	3027.5	1753.0	17.83
ADANIGREEN	1427.5	1425.1	1369.4	1398.4	1454.1	1480.8	1532.5	765.0	10.95
ADANIPOWER	1803.8	1808.6	1750.5	1777.1	1835.2	1866.7	1842.8	1290.5	3.39
ALKEM	5274.0	5244.5	5110.0	5192.0	5326.5	5379.0	5933.5	4716.2	-1.54
AMBUJACEM	427.0	430.5	414.0	420.5	437.0	447.0	625.0	394.0	-4.17
APLAPOLLO	1805.4	1790.2	1725.4	1765.4	1830.2	1855.0	2301.4	1492.0	-3.36
APOLLOHOSP	8290.5	8239.2	8031.2	8160.8	8368.8	8447.2	8443.0	6696.5	7.26
ASHOKLEY	145.8	145.3	139.7	142.8	148.4	150.9	215.4	115.0	-8.44
ASIANPAINT	2662.4	2654.4	2603.1	2632.7	2684.0	2705.7	2985.7	2115.0	8.53
ASTRAL	1536.9	1534.3	1502.8	1519.8	1551.3	1565.8	1768.7	1263.7	-1.71
ATGL	717.6	721.5	674.5	696.1	743.1	768.5	859.9	462.8	11.73
AUBANK	970.6	962.7	928.1	949.4	983.9	997.2	1079.6	682.2	-4.43
AUROPHARMA	1440.4	1439.2	1400.4	1420.4	1459.2	1478.0	1550.0	1016.1	4.29
AXISBANK	1255.2	1250.1	1215.6	1235.4	1269.9	1284.6	1418.3	1042.5	-1.38
BAJAJ-AUTO	10259.0	10292.0	10079.0	10169.0	10382.0	10505.0	10834.0	7858.5	1.10
BAJAJFINSV	1734.4	1728.1	1694.3	1714.4	1748.2	1761.9	2195.0	1597.0	-2.04
BAJAJHLDNG	10190.0	10171.7	9966.7	10078.3	10283.3	10376.7	14763.0	8588.0	-1.93
BAJFINANCE	876.8	874.1	855.6	866.2	884.7	892.6	1102.5	787.9	-7.74
BANKBARODA	268.9	266.5	257.4	263.1	272.2	275.6	325.5	230.5	1.70
BANKINDIA	139.9	138.4	132.6	136.2	142.1	144.2	178.4	108.8	1.22
BDL	1227.0	1212.8	1164.1	1195.5	1244.2	1261.5	2057.0	1086.0	-10.68
BEL	406.6	406.2	400.4	403.5	409.3	412.1	473.5	361.2	-6.25
BHARATFORG	1936.5	1926.4	1871.4	1904.0	1959.0	1981.4	2044.0	1100.5	5.10
BHARTIARTL	1824.1	1821.5	1790.9	1807.5	1838.1	1852.1	2174.5	1740.5	-0.33
BHEL	406.3	405.4	390.1	398.2	413.5	420.8	424.9	205.1	7.41
BIOCON	412.5	413.7	407.5	410.0	416.2	419.9	440.4	327.6	14.25
BLUESTARCO	1580.8	1571.3	1530.8	1555.8	1596.3	1611.8	2040.0	1450.0	-12.05
BOSCHLTD	37760.0	37615.0	36000.0	36880.0	38495.0	39230.0	41945.0	28610.0	5.16
BPCL	292.1	292.2	288.1	290.1	294.2	296.3	391.7	266.6	-3.00
BRITANNIA	5064.0	5085.5	4993.0	5028.5	5121.0	5178.0	6336.0	5050.0	-12.82
BSE	3966.1	3946.4	3783.4	3874.7	4037.7	4109.4	4446.8	2021.5	6.70
CANBK	131.9	130.4	125.4	128.6	133.7	135.5	162.9	103.6	-2.45
CGPOWER	906.7	903.9	879.8	893.2	917.4	928.1	944.1	525.5	13.03
CHOLAFIN	1470.6	1469.7	1420.3	1445.5	1494.9	1519.1	1831.5	1299.4	-10.09
CIPLA	1375.2	1375.1	1355.5	1365.4	1385.0	1394.7	1673.0	1165.7	2.86
COALINDIA	472.3	472.4	460.0	466.2	478.5	484.7	491.3	368.7	-1.20
COCHINSHIP	1455.7	1452.0	1413.2	1434.5	1473.3	1490.8	2545.0	1187.0	-15.37
COFORGE	1420.9	1442.6	1369.6	1395.3	1468.3	1515.6	1994.0	1008.1	23.25
COLPAL	2018.6	2008.7	1970.5	1994.5	2032.7	2046.9	2504.0	1782.0	-7.04
CONCOR	451.9	453.3	437.4	444.6	460.5	469.2	652.0	421.5	-12.46
COROMANDEL	1745.6	1752.2	1703.2	1724.4	1773.4	1801.2	2718.9	1720.2	-12.72
CUMMINSIND	5692.5	5699.5	5607.5	5650.0	5742.0	5791.5	6100.0	3212.2	7.86
DABUR	417.9	419.6	410.8	414.3	423.1	428.4	577.0	403.4	-6.20
DIVISLAB	6576.5	6547.0	6402.5	6489.5	6634.0	6691.5	7071.5	5636.5	-0.82
DIXON	11227.0	11340.0	10853.0	11040.0	11527.0	11827.0	18471.0	9600.0	-1.60

**NSE 200 SUPPORT & RESISTANCE**

SYMBOL	CLOSE	PIVOT	SUPT 2	SUPT 1	RESI 1	RESI 2	52 W H	52 W L	30 D % CHG
DLF	581.6	582.1	564.5	573.0	590.6	599.7	886.8	489.4	-4.22
DMART	4168.4	4126.5	3949.7	4059.0	4235.8	4303.3	4949.5	3529.0	-4.76
DRREDDY	1263.3	1265.1	1246.8	1255.1	1273.4	1283.4	1379.7	1148.4	-1.97
EICHERMOT	7130.0	7117.7	6984.7	7057.3	7190.3	7250.7	8230.0	5219.5	-3.06
ENRIN	3686.6	3699.9	3533.3	3610.0	3776.6	3866.5	3968.0	2115.0	10.67
ETERNAL	247.0	247.0	242.0	244.5	249.5	251.9	368.5	212.6	-2.08
EXIDEIND	399.0	401.0	387.1	393.0	406.9	414.8	431.0	287.0	11.35
FEDERALBNK	301.1	298.1	285.5	293.3	305.8	310.6	302.9	185.1	4.58
FORTIS	930.3	927.8	906.8	918.5	939.6	948.9	1104.3	723.0	-2.40
GAIL	163.9	163.8	161.7	162.8	164.9	165.9	202.8	134.4	-0.52
GLENMARK	2174.0	2181.4	2107.6	2140.8	2214.6	2255.2	2474.0	1473.3	-9.49
GMRAIRPORT	97.8	97.8	97.8	97.8	97.8	97.8	110.4	79.9	0.25
GODFRYPHLP	2246.9	2239.3	2170.4	2208.6	2277.5	2308.2	3947.0	1832.1	1.07
GODREJCP	986.5	988.6	960.2	973.3	1001.7	1017.0	1309.0	967.1	-8.29
GODREJPROP	1704.8	1700.1	1635.6	1670.2	1734.7	1764.6	2506.5	1434.0	-10.25
GRASIM	3101.6	3092.2	3037.3	3069.4	3124.3	3147.1	3197.5	2502.5	8.46
GROWWW	188.9	189.7	184.5	186.7	191.9	195.0	227.2	112.0	-14.34
GVT&D	4964.5	4939.3	4652.8	4808.7	5095.2	5225.8	5222.1	2204.0	10.77
HAL	4264.1	4256.8	4169.6	4216.9	4304.1	4344.0	5147.0	3479.1	-6.39
HAVELLS	1156.4	1164.6	1133.7	1145.1	1176.0	1195.5	1621.1	1123.6	-8.05
HCLTECH	1179.0	1195.3	1142.1	1160.5	1213.7	1248.5	1780.1	1103.4	-1.92
HDFCAMC	2510.0	2519.0	2398.9	2454.5	2574.6	2639.1	2967.3	2205.6	-8.87
HDFCBANK	753.7	751.1	736.8	745.2	759.5	765.4	1020.5	726.7	-3.39
HDFCLIFE	574.4	575.4	564.2	569.3	580.5	586.5	820.8	555.1	-2.34
HEROMOTOCO	4840.9	4843.2	4784.4	4812.7	4871.5	4902.0	6388.5	4158.1	-4.47
HINDALCO	1138.9	1141.8	1108.5	1123.7	1157.0	1175.1	1176.0	629.6	9.32
HINDPETRO	384.1	383.1	375.3	379.7	387.5	390.8	508.5	316.2	2.45
HINDUNILVR	2090.6	2087.5	2060.1	2075.3	2102.7	2114.9	2750.0	2022.5	-9.63
HINDZINC	610.6	615.3	594.5	602.5	623.3	636.0	733.0	413.5	0.78
HUDCO	202.6	202.2	197.8	200.2	204.6	206.5	253.7	159.0	-8.16
HYUNDAI	1866.4	1873.9	1841.1	1853.7	1886.5	1906.7	2890.0	1658.0	1.11
ICICIAMC	3342.9	3315.9	3171.0	3257.0	3401.9	3460.8	3611.0	2530.0	1.95
ICICIBANK	1242.0	1234.7	1200.1	1221.0	1255.6	1269.3	1500.0	1187.6	-2.16
ICICIGI	1740.8	1735.3	1710.3	1725.5	1750.5	1760.3	2068.7	1629.5	-0.96
IDEA	14.9	14.7	13.6	14.2	15.3	15.7	15.1	6.1	41.73
IDFCFIRSTB	71.8	71.2	68.9	70.3	72.6	73.5	87.0	58.1	3.32
INDHOTEL	656.3	655.6	643.1	649.7	662.2	668.1	812.0	565.0	1.63
INDIANB	847.9	838.2	802.8	825.3	860.7	873.6	1000.9	606.0	2.25
INDIGO	4512.1	4489.0	4314.0	4413.1	4588.1	4664.0	6232.5	3895.2	6.75
INDUSINDBK	900.0	897.3	873.5	886.7	910.6	921.2	968.9	710.6	-1.59
INDUSTOWER	429.2	429.2	420.5	424.9	433.6	437.9	481.5	312.6	6.86
INFY	1222.6	1229.5	1195.6	1209.1	1243.0	1263.4	1728.0	1089.0	4.46
IOC	137.4	137.4	135.7	136.5	138.3	139.2	189.0	130.2	-3.42
IRCTC	510.8	513.5	503.9	507.4	516.9	523.0	798.6	492.7	-8.07
IREDA	122.8	123.1	119.7	121.3	124.6	126.4	186.6	108.7	-9.35
IRFC	95.8	95.7	93.6	94.7	96.8	97.8	149.0	87.0	-8.30
ITC	277.0	278.2	271.0	274.0	281.2	285.3	428.6	275.2	-11.04
JINDALSTEL	1211.3	1206.7	1177.8	1194.6	1223.5	1235.6	1306.2	882.7	-4.07
JIOFIN	235.0	234.7	228.9	231.9	237.8	240.5	338.6	223.3	-7.08
JSWENERGY	580.2	580.7	561.6	570.9	590.0	599.7	617.4	427.8	3.15

**NSE 200 SUPPORT & RESISTANCE**

SYMBOL	CLOSE	PIVOT	SUPT 2	SUPT 1	RESI 1	RESI 2	52 W H	52 W L	30 D % CHG
JSWSTEEL	1312.9	1309.6	1288.4	1300.6	1321.8	1330.8	1328.0	962.2	3.18
JUBLFOOD	432.3	432.3	422.1	427.2	437.4	442.5	719.0	408.8	-9.53
KALYANKJIL	353.0	350.5	339.2	346.1	357.4	361.9	617.7	337.0	-14.15
KEI	5222.0	5258.0	5115.0	5168.5	5311.5	5401.0	5476.3	3500.0	3.23
KOTAKBANK	381.0	379.9	371.5	376.3	384.6	388.2	453.2	345.5	2.91
KPITTECH	774.3	781.9	751.7	763.0	793.2	812.1	1434.5	624.9	0.43
LAURUSLABS	1394.3	1387.4	1361.6	1377.9	1403.7	1413.2	1398.8	609.2	19.51
LENSKART	508.6	508.6	508.6	508.6	508.6	508.6	557.7	356.1	0.06
LGEINDIA	1518.2	1524.4	1479.5	1498.8	1543.7	1569.3	1749.0	1304.1	-3.62
LICHSGFIN	541.3	536.5	515.5	528.4	549.4	557.5	646.5	458.9	-2.61
LODHA	879.2	884.9	852.6	865.9	898.2	917.1	1531.0	650.8	-5.05
LT	3953.2	3951.7	3837.7	3895.5	4009.5	4065.7	4440.0	3288.1	-3.75
LTF	267.9	267.4	260.2	264.0	271.2	274.6	329.5	172.1	-6.32
LTM	4052.7	4112.9	3812.8	3932.8	4232.9	4413.0	6429.5	3901.0	-3.54
LUPIN	2261.2	2253.7	2223.7	2242.5	2272.5	2283.7	2494.0	1836.8	-3.78
M&M	3011.1	3001.9	2937.4	2974.2	3038.7	3066.4	3839.9	2896.0	-3.20
M&MFIN	290.6	289.5	277.6	284.1	295.9	301.3	412.2	246.4	-4.54
MANKIND	2369.5	2346.0	2247.6	2308.6	2407.0	2444.4	2716.5	1909.7	5.19
MARICO	811.3	809.2	795.9	803.6	816.9	822.5	848.8	680.3	3.01
MARUTI	13044.0	13053.7	12758.7	12901.3	13196.3	13348.7	17370.0	12016.0	-3.99
MAXHEALTH	965.6	956.4	924.5	945.0	976.9	988.3	1314.3	903.0	-4.60
MAZDOCK	2441.8	2429.1	2357.7	2399.7	2471.1	2500.5	3548.7	2057.4	-6.45
MCX	2833.6	2845.1	2738.4	2786.0	2892.7	2951.8	3480.0	1345.1	-2.54
MFSL	1559.6	1563.1	1515.5	1537.5	1585.1	1610.7	1892.5	1433.6	-3.09
MOTHERSON	145.6	144.5	140.0	142.8	147.3	149.0	151.8	89.7	20.66
MOTILALOFS	855.6	854.6	823.2	839.4	870.8	886.0	1097.1	614.9	2.20
MPHASIS	2288.5	2309.2	2232.2	2260.3	2337.3	2386.2	3037.2	2013.0	0.20
MRF	124790	124753	123433	124112	125432	126073	163600	122000	-3.28
MUTHOOTFIN	3218.3	3211.2	3092.9	3155.6	3273.9	3329.5	4149.5	2211.0	-7.70
NATIONALUM	436.9	436.7	426.1	431.5	442.1	447.4	445.2	179.8	7.04
NAUKRI	1006.1	1005.2	974.6	990.3	1020.9	1035.8	1550.0	908.3	2.97
NESTLEIND	1391.5	1398.0	1366.1	1378.8	1410.7	1429.9	1498.1	1084.7	-4.80
NHPC	75.1	75.3	73.6	74.3	76.0	76.9	92.3	71.6	-10.25
NMDC	96.0	96.2	93.8	94.9	97.3	98.6	97.5	66.8	7.76
NTPC	366.8	367.3	359.5	363.2	371.0	375.1	414.4	315.6	-8.42
NYKAA	269.4	267.9	261.4	265.4	271.9	274.4	285.6	191.2	1.62
OBEROIRLTY	1637.4	1641.9	1590.1	1613.7	1665.5	1693.7	2005.0	1391.2	-3.47
OFSS	9997.5	10077.2	9710.2	9853.8	10220.8	10444.2	10584.5	6234.5	2.36
OIL	491.0	490.7	481.1	486.0	495.6	500.3	531.0	384.6	3.35
ONGC	267.8	266.9	262.5	265.1	269.5	271.3	307.5	228.6	-8.42
PAGEIND	37565.0	37508.3	36828.3	37196.7	37876.7	38188.3	50590.0	29805.0	1.75
PATANJALI	441.7	441.3	419.9	430.8	452.2	462.7	653.9	430.4	-3.56
PAYTM	1062.7	1057.9	1019.2	1041.0	1079.7	1096.6	1381.8	857.2	-4.74
PERSISTENT	5097.5	5184.5	4880.5	4989.0	5293.0	5488.5	6599.0	4449.1	6.10
PFC	416.6	414.5	404.4	410.5	420.6	424.6	486.5	329.9	-6.75
PHOENIXLTD	1710.4	1702.3	1655.8	1683.1	1729.6	1748.8	1993.0	1402.5	-4.08
PIDILITIND	1469.2	1462.3	1433.6	1451.4	1480.1	1491.0	1575.0	1259.0	7.65
PIIND	2738.3	2727.9	2662.8	2700.5	2765.6	2793.0	4330.0	2657.2	-10.06
PNB	105.8	104.9	101.7	103.8	107.0	108.1	135.2	98.5	-2.65
POLICYBZR	1578.5	1597.2	1487.4	1532.9	1642.7	1707.0	1978.0	1364.0	-5.43

NSE 200 SUPPORT & RESISTANCE									
SYMBOL	CLOSE	PIVOT	SUPT 2	SUPT 1	RESI 1	RESI 2	52 W H	52 W L	30 D % CHG
POLYCAB	9571.5	9563.7	9403.2	9487.3	9647.8	9724.2	9747.0	5760.0	14.87
POWERGRID	285.1	283.8	278.2	281.6	287.3	289.5	325.0	250.0	-10.75
POWERINDIA	35190.0	35436.7	34336.7	34763.3	35863.3	36536.7	38785.0	16111.0	4.48
PREMIERENE	1089.0	1082.6	1049.9	1069.4	1102.1	1115.3	1136.4	660.0	4.77
PRESTIGE	1345.6	1360.3	1297.5	1321.5	1384.3	1423.1	1814.0	1090.0	-7.64
RADICO	3464.1	3474.9	3416.3	3440.2	3498.8	3533.5	3679.0	2500.0	2.33
RECLTD	325.7	325.3	320.4	323.0	327.9	330.2	428.7	304.1	-7.78
RELIANCE	1313.2	1312.7	1289.7	1301.5	1324.5	1335.7	1611.8	1290.0	-10.29
RVNL	239.0	237.9	229.4	234.2	242.7	246.3	442.8	232.7	-19.56
SAIL	203.9	203.8	197.6	200.8	206.9	210.0	209.7	118.1	9.55
SBICARD	596.6	599.7	586.1	591.3	604.9	613.2	1027.3	594.5	-7.55
SBILIFE	1784.2	1784.4	1733.5	1758.8	1809.7	1835.3	2132.0	1720.0	-2.12
SBIN	970.5	960.6	923.8	947.1	983.9	997.4	1234.7	781.7	-9.07
SHREECEM	24775.0	24745.0	24285.0	24530.0	24990.0	25205.0	32490.0	22550.0	0.28
SHRIRAMFIN	913.0	905.9	878.9	895.9	922.9	932.9	1108.0	566.5	-4.84
SIEMENS	3709.6	3709.9	3619.9	3664.7	3754.7	3799.9	3937.3	2826.0	-3.26
SOLARINDS	18577.0	18533.0	18081.0	18329.0	18781.0	18985.0	18874.0	11646.0	19.67
SRF	2718.4	2729.3	2682.9	2700.7	2747.1	2775.7	3325.0	2355.0	6.29
SUNPHARMA	1788.5	1780.5	1741.0	1764.8	1804.3	1820.0	1916.6	1548.0	-2.00
SUPREMEIND	3572.9	3557.3	3486.3	3529.6	3600.6	3628.3	4739.0	3182.0	-1.60
SUZLON	54.4	54.2	52.4	53.4	55.2	56.0	72.4	38.2	-1.20
SWIGGY	251.9	251.6	245.2	248.6	255.0	258.0	474.0	244.5	-9.79
TATACAP	309.1	305.8	293.7	301.4	313.5	317.8	367.3	296.0	-5.68
TATACOMM	1933.7	1933.2	1879.1	1906.4	1960.5	1987.3	2049.9	1322.5	24.55
TATACONSUM	1144.0	1149.5	1126.1	1135.0	1158.4	1172.9	1282.7	1007.2	-1.48
TATAELXSI	4347.0	4377.3	4166.4	4256.7	4467.6	4588.2	6735.0	3945.0	3.88
TATAINVEST	665.2	665.1	647.4	656.3	674.0	682.7	1184.7	538.9	-6.99
TATAPOWER	411.8	411.3	403.6	407.7	415.4	419.0	464.9	342.5	-6.67
TATASTEEL	211.9	210.7	205.8	208.8	213.7	215.6	224.4	149.8	-0.30
TCS	2241.7	2286.5	2118.3	2180.0	2348.2	2454.7	3538.0	2206.4	-7.66
TECHM	1472.3	1498.2	1411.1	1441.7	1528.8	1585.3	1854.0	1304.1	-0.11
TIINDIA	3070.2	3077.2	2976.7	3023.5	3124.0	3177.7	3419.9	2164.9	5.28
TITAN	4088.8	4064.9	3963.1	4025.9	4127.7	4166.7	4605.0	3303.1	-6.44
TMCV	374.0	371.4	357.3	365.6	379.7	385.5	509.0	306.3	-9.40
TMPV	398.2	394.3	379.3	388.7	403.7	409.2	744.0	294.3	16.02
TORNTPHARM	4368.5	4347.5	4241.7	4305.1	4410.9	4453.3	4712.9	3108.8	2.78
TRENT	4257.6	4235.8	4116.0	4186.8	4306.6	4355.6	4174.0	2183.7	53.01
TVSMOTOR	3316.9	3328.4	3263.0	3289.9	3355.3	3393.8	3970.0	2655.1	-5.16
ULTRACEMCO	11101.0	11120.0	10901.0	11001.0	11220.0	11339.0	13110.0	10325.0	-5.89
UNIONBANK	166.7	164.9	158.0	162.3	169.3	171.9	205.5	124.6	2.15
UNITDSPR	1262.9	1264.5	1235.0	1248.9	1278.4	1294.0	1645.0	1210.8	-4.82
UPL	646.1	642.9	629.4	637.7	651.2	656.4	812.2	565.2	0.72
VBL	533.4	533.9	522.7	528.1	539.2	545.0	544.4	381.0	5.38
VEDL	328.2	329.1	320.1	324.1	333.1	338.1	795.0	268.7	11.45
VMM	120.3	119.7	115.8	118.1	122.0	123.6	157.6	98.8	-4.21
VOLTAS	1235.0	1228.0	1194.2	1214.6	1248.4	1261.8	1582.5	1186.8	-15.05
WAAREEENER	3084.5	3081.0	2980.2	3032.4	3133.2	3181.8	3865.0	2403.0	-1.57
WIPRO	204.1	204.8	198.4	201.3	207.7	211.2	273.1	186.5	1.57
YESBANK	22.9	22.7	21.9	22.4	23.2	23.6	24.3	17.2	14.83
ZYDUSLIFE	1076.6	1068.9	1036.7	1056.6	1088.8	1101.1	1115.5	835.5	19.24

**Disclosure & Disclaimer :**

HDFC Securities Limited (HSL) is a SEBI Registered Research Analyst having registration no. INH000002475.

This report has been prepared by HDFC Securities Ltd and is solely for information of the recipient only. The report must not be used as a singular basis of any investment decision. The views herein are of a general nature and do not consider the risk appetite or the particular circumstances of an individual investor; readers are requested to take professional advice before investing. "This report may have been refined using AI tools to enhance clarity and readability."

Nothing in this document should be construed as investment advice. Each recipient of this document should make such investigations as they deem necessary to arrive at an independent evaluation of an investment in securities of the companies referred to in this document (including merits and risks) and should consult their own advisors to determine merits and risks of such investment. The information and opinions contained herein have been compiled or arrived at, based upon information obtained in good faith from sources believed to be reliable. Such information has not been independently verified and no guaranty, representation of warranty, express or implied, is made as to its accuracy, completeness or correctness. All such information and opinions are subject to change without notice. Descriptions of any company or companies or their securities mentioned herein are not intended to be complete. HSL is not obliged to update this report for such changes. HSL has the right to make changes and modifications at any time.

This report is not directed to, or intended for display, downloading, printing, reproducing or for distribution to or use by, any person or entity who is a citizen or resident or located in any locality, state, country or other jurisdiction where such distribution, publication, reproduction, availability or use would be contrary to law or regulation or what would subject HSL or its affiliates to any registration or licensing requirement within such jurisdiction.

If this report is inadvertently sent or has reached any person in such country, especially, United States of America, the same should be ignored and brought to the attention of the sender. This document may not be reproduced, distributed or published in whole or in part, directly or indirectly, for any purposes or in any manner.

Foreign currencies denominated securities, wherever mentioned, are subject to exchange rate fluctuations, which could have an adverse effect on their value or price, or the income derived from them. In addition, investors in securities such as ADRs, the values of which are influenced by foreign currencies effectively assume currency risk. It should not be considered to be taken as an offer to sell or a solicitation to buy any security.

This document is not, and should not, be construed as an offer or solicitation of an offer, to buy or sell any securities or other financial instruments. This report should not be construed as an invitation or solicitation to do business with HSL. HSL may from time to time solicit from, or perform broking, or other services for, any company mentioned in this mail and/or its attachments.

HSL and its affiliated company(ies), their directors and employees may; (a) from time to time, have a long or short position in, and buy or sell the securities of the company(ies) mentioned herein or (b) be engaged in any other transaction involving such securities and earn brokerage or other compensation or act as a market maker in the financial instruments of the company(ies) discussed herein or act as an advisor or lender/borrower to such company(ies) or may have any other potential conflict of interests with respect to any recommendation and other related information and opinions.

HSL, its directors, analysts or employees do not take any responsibility, financial or otherwise, of the losses or the damages sustained due to the investments made or any action taken on basis of this report, including but not restricted to, fluctuation in the prices of shares and bonds, changes in the currency rates, diminution in the NAVs, reduction in the dividend or income, etc.

HSL and other group companies, its directors, associates, employees may have various positions in any of the stocks, securities and financial instruments dealt in the report, or may make sell or purchase or other deals in these securities from time to time or may deal in other securities of the companies / organizations described in this report. As regards the associates of HSL please refer the website.

HSL or its associates might have managed or co-managed public offering of securities for the subject company or might have been mandated by the subject company for any other assignment in the past twelve months.

Please note that HDFC Securities has a proprietary trading desk. This desk maintains an arm's length distance with the Research team and all its activities are segregated from Research activities. The proprietary desk operates independently, potentially leading to investment decisions that may deviate from research views.

HSL or its associates might have received any compensation from the companies mentioned in the report during the period preceding twelve months from the date of this report for services in respect of managing or co-managing public offerings, corporate finance, investment banking or merchant banking, brokerage services or other advisory service in a merger or specific transaction in the normal course of business.

HSL or its analysts did not receive any compensation or other benefits from the companies mentioned in the report or third party in connection with preparation of the research report. Accordingly, neither HSL nor Research Analysts have any material conflict of interest at the time of publication of this report. Compensation of our Research Analysts is not based on any specific merchant banking, investment banking or brokerage service transactions. HSL may have issued other reports that are inconsistent with and reach different conclusion from the information presented in this report.

Research entity has not been engaged in market making activity for the subject company. Research analyst has not served as an officer, director or employee of the subject company. We have not received any compensation/benefits from the subject company or third party in connection with the Research Report.

HDFC securities Limited, I Think Techno Campus, Building - B, "Alpha", Office Floor 8, Near Kanjurmarg Station, Opp. Crompton Greaves, Kanjurmarg (East), Mumbai 400 042 Phone: (022) 3075 3400 Fax: (022) 2496 5066

Compliance Officer: Murli V Karkera Email: [complianceofficer@hdfcsec.com](mailto:complianceofficer@hdfcsec.com) Phone: (022) 3045 3600

For grievance redressal contact Customer Care Team Email: [customer-care@hdfcsec.com](mailto:customer-care@hdfcsec.com) Phone: (022) 3901 9400

HDFC Securities Limited, SEBI Reg. No.: NSE, BSE, MSEI, MCX: INZ000186937; AMFI Reg. No. ARN: 13549; PFRDA Reg. No. POP: 11092018; IRDA Corporate Agent License No.: CA0062; SEBI Research Analyst Reg. No.: INH000002475; SEBI Investment Adviser Reg. No.: INA000011538; CIN - U67120MH2000PLC152193

Investment in securities market are subject to market risks. Read all the related documents carefully before investing.

Mutual Funds Investments are subject to market risk. Please read the offer and scheme related documents carefully before investing.

Registration granted by SEBI, membership of BASL (in case of IAs) and certification from NISM in no way guarantee performance of the intermediary or provide any assurance of returns to investors.