

PRIME DAILY

June 10, 2026



U.S. stocks ended mixed but recover from deep losses amid renewed US-Iran tensions

U.S. equities ended mixed on Tuesday, recovering from steep intraday losses amid heightened geopolitical tensions after President Donald Trump warned of retaliation following an Iranian attack that shot down an American helicopter.

The S&P 500 slipped 0.3% to close at 7,385.48, recovering from an intraday decline of as much as 2.3%. The index recorded a sharp 3.4% bottom-to-top reversal—its second largest since April 2025, when the Trump administration paused additional tariffs, according to Bloomberg data.

The Nasdaq Composite fell 1% to 25,678.82, trimming a steeper fall of 3.7%, while the Dow Jones Industrial Average edged up 0.1% to 50,870.94 after reversing losses of up to 1.1%.

Sentiment weakened after initial hopes of Middle East de-escalation faded, with Trump confirming that Iran had shot down a U.S. helicopter over the Strait of Hormuz.

In commodities, gold and silver dropped to two-month lows amid rising rate expectations and geopolitical developments. Brent crude rebounded 1% today to \$92.50 per barrel after briefly slipping below \$90 yesterday.

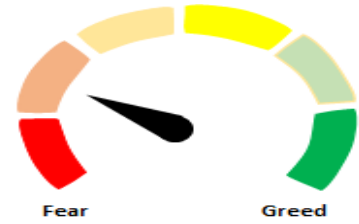
Asian markets trading lower today, tracking geopolitical concerns and a selloff in technology stocks.

On the domestic front, The Indian rupee appreciated by 36 paise yesterday to close at 95.35 against the dollar, supported by a risk-on sentiment driven by a weaker US dollar and softer crude oil prices amid easing geopolitical concerns. Additionally, renewed inflows into the debt market, following recent RBI measures, lent further support to the currency.

Indian markets rebounded strongly yesterday after sharp fall on the Monday. The Nifty 50 gained 119 points and ended near day high to close at 23243. Broader markets outperformed, with midcap and smallcap indices posting gains, supported by strong market breadth.

Technically, Nifty managed to hold above the previous session's low of 23,070, which is a constructive sign indicating buying interest at lower levels. However, the current rebound is not sufficient to confirm a trend reversal. A decisive move above 23,516 is required to negate the prevailing downtrend. On the downside, the 23,000–23,100 zone remains a key support. A break below 23,000 could accelerate declines toward the 22,700–22,800 zone.

Indian markets are expected to open mildly lower, tracking weak Asian cues, while midcap and smallcap stocks are likely to continue their outperformance



Global Equity Indices			
	Close	Abs. Change	% Change
Indian Indices			
Sensex	73,919	394.5 ▲	0.54%
Nifty	23,242	119.1 ▲	0.52%
Midcap	60,715	809.8 ▲	1.35%
Small cap	18,064	300.2 ▲	1.69%
US Indices			
Dow Jones	50,872	86.1 ▲	0.17%
S&P 500	7,387	-19.1 ▼	-0.26%
Nasdaq	25,679	-250.8 ▼	-0.97%
European Indices			
FTSE	10,227	-145.9 ▼	-1.41%
DAX	24,433	-183.2 ▼	-0.74%
CAC	8,203	4.1 ▲	0.05%
Asian Indices			
Shanghai	4,010	50.7 ▲	1.26%
Hang Seng	24,566	-91.2 ▼	-0.37%
Nikkei	64,473	447.9 ▲	0.69%

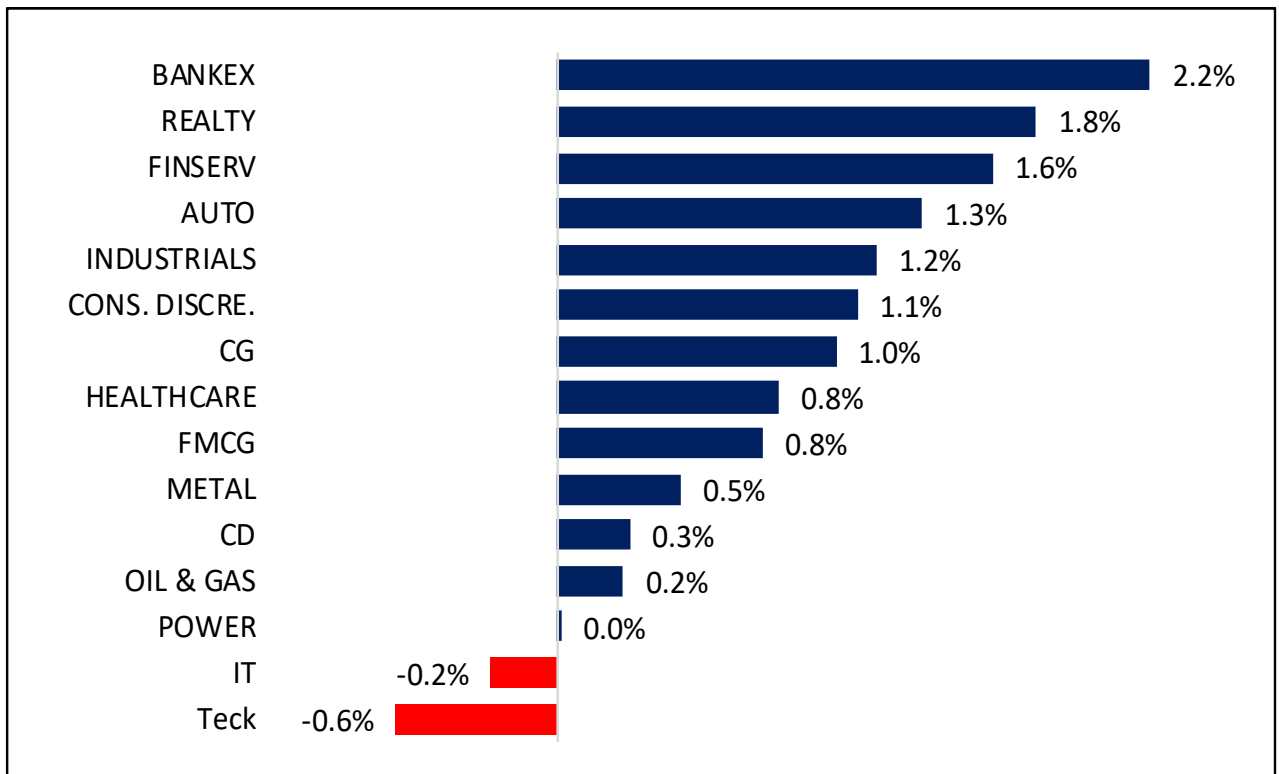
Indices Futures			
	Close	Abs. Change	% Change
IFSC Nifty			
IFSC Nifty	23,241	56.0 ▲	0.24%
US Indices			
Dow Jones	50,847	-62.0 ▼	-0.12%
S&P 500	7,374	-18.8 ▼	-0.25%
Nasdaq	28,995	-122.3 ▼	-0.42%
European Indices			
FTSE	10,280	-18.1 ▼	-0.18%
DAX	24,498	46.0 ▲	0.19%
Asian Indices			
Shanghai	4,690	-53.0 ▼	-1.12%
Hang Seng	24,303	-139.0 ▼	-0.57%
Nikkei	64,925	332.5 ▲	0.51%

Nifty50 Index Contributors

Top Five (Positive Contributors)		
Stock	Points	% Change
ICICIBANK	40.4	0.17
SBIN	20.1	0.09
AXISBANK	16.5	0.07
RELIANCE	13.3	0.06
BAJFINANCE	9.3	0.04

Bottom Five (Negative Contributors)		
Stock	Points	% Change
BHARTIARTL	-10.2	-0.04
TITAN	-8.26	-0.04
NTPC	-6.71	-0.03
POWERGRID	-4.79	-0.02
INFY	-4.5	-0.02

BSE Sectoral Leaders & Laggards

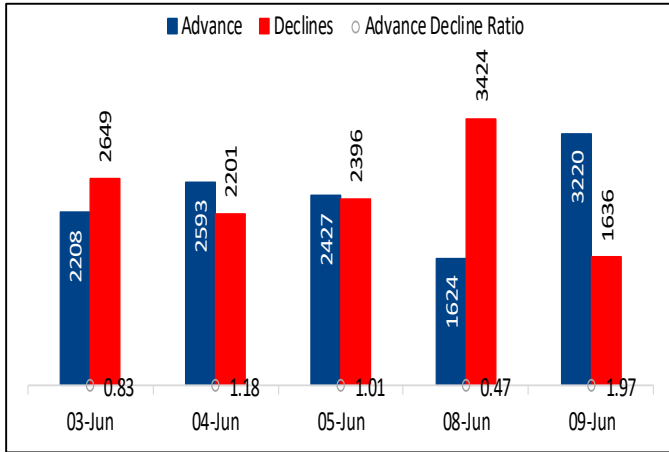


Nifty50 Index Top Pops & Drops

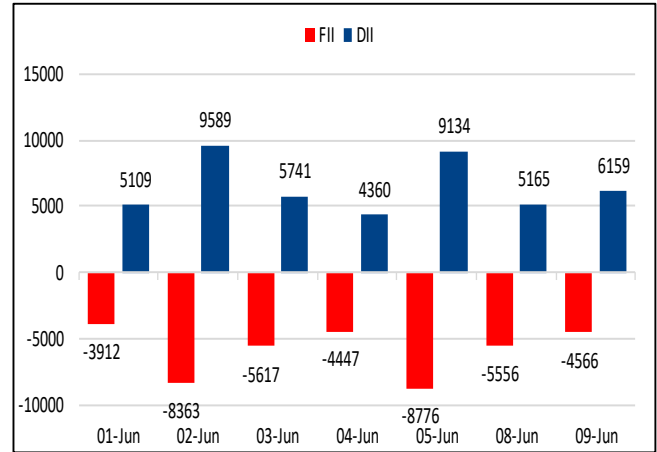
Nifty50 Top Five Gainers			
Symbol	LTP	% Change	Volume
INDIGO	4537.6	4.08	1,000,203
JIOFIN	234.2	2.34	9,959,663
EICHERMOT	7203.0	2.17	547,103
SBIN	1002.7	2.11	22,142,480
ICICIBANK	1275.0	1.98	22,368,579

Nifty50 Top Five Losers			
Symbol	LTP	% Change	Volume
ONGC	259.0	-2.13	10,796,349
TITAN	4104.9	-2.09	1,284,964
NTPC	355.7	-1.86	14,246,656
POWERGRID	285.7	-1.58	7,973,130
TECHM	1483.8	-1.30	1,330,108

BSE Advance & Declines



Institutional Activities (Rs Cr)



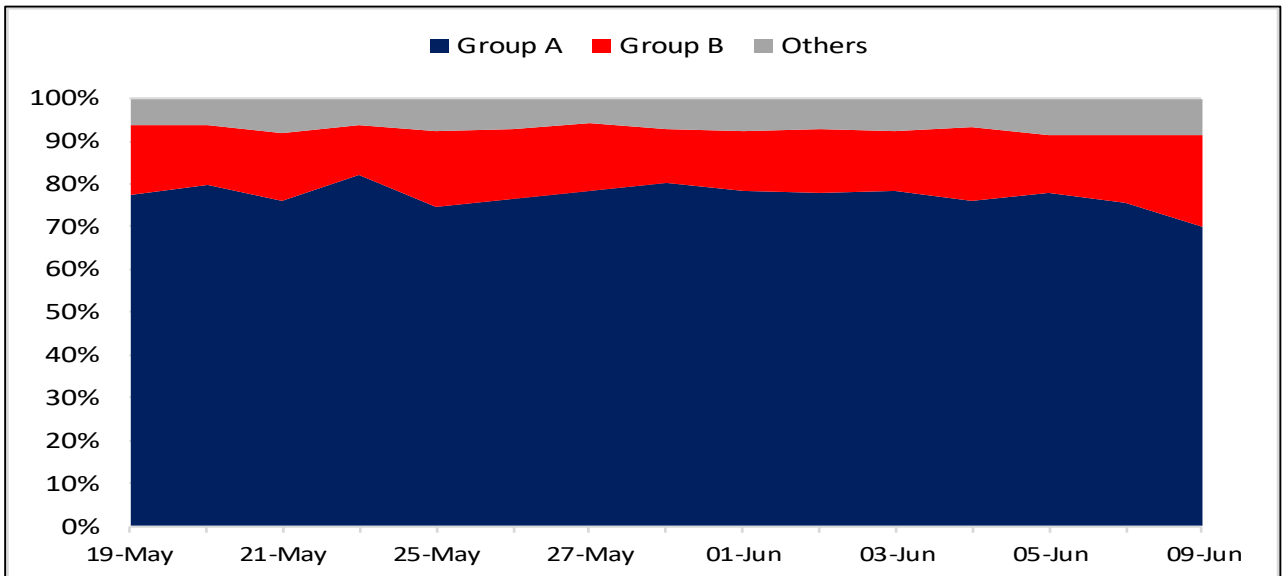
52 Week High Stocks

	09-Jun-26	08-Jun-26
BSE Universe	137	187
BSE Group A Stocks Hitting 52 Week High		
Stocks	Price	52 Week High
ASTERDM	790.3	806.8
EQUITASBNK	74.9	76.9
FEDERALBNK	315.2	315.8
INOXINDIA	1685.6	1752.0
J&KBANK	156.9	157.8



52 Week Low Stocks

	09-Jun-26	08-Jun-26
BSE Universe	94	128
BSE Group A Stocks Hitting 52 Week Low		
Stocks	Price	52 Week Low
BAYERCROP	4,288.1	4,234.0
EIDPARRY	736.0	717.0
RELIANCE	1,269.6	1,257.5
SWIGGY	250.0	238.8
TCS	2,149.6	2,133.7

BSE Cash Market Turnover Participant-wise



News Highly Sensitive to Stock Price

Impact	Stock	News
	Quality Power	<p>Quality Power Electrical Equipments Limited announced that it executed a term sheet to acquire 100% of the equity share capital of Winwin Speciality Insulators Limited (WSIL), a Visakhapatnam-based manufacturer of high-voltage ceramic and polymeric insulators. The transaction is subject to customary due diligence, statutory and regulatory approvals, and other closing conditions, and is expected to be completed within three months. The acquisition was done at an Enterprise value (EV) of about ~Rs 315 crores.</p>
	Afcons Infra	<p>Afcons Infrastructure Ltd said that it has received the Letter of Award from the Vadhvan Port Project Limited (VPPL) for the construction of a 10.14 km-long breakwater at the upcoming Vadhvan Port in Maharashtra. The project value is Rs 5301 crores. This, when completed, will be the second longest breakwater in the world.</p>

Stock	News
<p>JSW Steel Ltd.</p>	<p>JSW Steel's consolidated crude steel production jumped 15% year-on-year to 2.29 million tonnes in May, aided by full operations at its Dolvi plant and the ramp-up of JVML, even as a key blast furnace at Vijayanagar remained shut for expansion. The country's largest steelmaker by capacity said production from its Indian operations stood at 2.19 million tonnes during the month, up 15% from 1.91 million tonnes a year earlier. Output from its US facility in Ohio grew 20% to 950,000 tonnes from 790,000 tonnes.</p>
<p>Va Tech Wabag</p>	<p>Va Tech Wabag (WABAG) has secured the design & build contract for the proposed Ajman Sewage Biorefinery Plant - Phase 3 in the United Arab Emirates from Ajman Sewerage (Private) Company. The project will be executed through a consortium arrangement, with WABAG serving as the consortium leader. According to the company's project classification, the value of the order ranges between Rs 250 crore to 600 crore.</p>
<p>KNR Constructions</p>	<p>KNR Construction announced that it has received letter of acceptance (LoA) from Malkajgiri Municipal Corporation for the construction of a flyover project in Hyderabad, Telangana. The contract is valued at Rs 235.07 crore and is scheduled to be completed within 24 months.</p>
<p>Oil and Gas</p>	<p>Aviation fuel prices have increased by about 10 percent. State-owned fuel retailers have introduced a price stabilization scheme. Domestic airlines can now get a fixed fuel rate for up to three years. This move aims to protect airlines and passengers from global oil price swings. Airlines opting for the scheme will pay Rs 115 per litre.</p>
<p>NTPC Green Energy</p>	<p>NTPC Renewable Energy Limited (NTPC REL), shall be developing a 250 MW Solar Power Project integrated with Battery Energy Storage System (BESS) on vacant defence land at Sitapur, Uttar Pradesh. It is the first of its kind large-scale solar power project with BESS to strengthen energy security of defence establishments. The power generated from the project shall be utilised by various defence establishments across Uttar Pradesh.</p>

Key Events

Japan PPI inflation jumps in May amid energy-driven cost pressures

Japan's producer prices rose more than expected in May, underscoring persistent cost pressures from higher energy and raw material imports, Bank of Japan data showed. Japan's producer price index (PPI) climbed 0.9% in May from the previous month, above forecasts for a 0.5% rise and accelerating from April's 0.5% increase.

Record petroleum exports help to shrink US trade deficit in April

The U.S. trade deficit narrowed in April as exports of petroleum products and capital goods jumped to record highs. The trade gap contracted 1.2% to \$55.9 billion, the Commerce Department's Bureau of Economic Analysis and Census Bureau said. Data for March were revised lower to show the deficit at \$56.6 billion instead of the previously reported \$60.3 billion.

Germany's industrial output climbs 0.4% in April

Germany's industrial production increased 0.4% in April from the previous month, the federal statistics office reported. Economists surveyed had forecast a 0.5% gain. The country's exports also grew during the period, defying analyst expectations for a decline. The data offers positive signs for Europe's largest economy as it enters the second quarter.

Chart with Interesting Observations

Global VLCC Orderbook Hits Unprecedented Levels

- Orders for the world’s largest crude oil carriers, known as Very Large Crude Carriers (VLCCs), have surged to unprecedented levels, with 262 vessels currently under construction at shipyards globally. This represents an extraordinary increase of more than 1,000% compared with just two years ago. Each supertanker has the capacity to transport up to two million barrels of crude, highlighting the scale of investment being directed toward expanding global oil-shipping capacity. The rapid rise in new orders reflects shipowners’ efforts to take advantage of elevated freight earnings and ongoing disruptions across international supply chains.
- However, the current boom has raised concerns about a potential oversupply of vessels in the years ahead. The orderbook has already surpassed the previous record of roughly 255 supertankers reached in October 2008, a period that was followed by a sharp downturn in tanker markets. At that time, excessive fleet growth outpaced demand, causing freight rates to collapse and significantly reducing revenues for shipping companies. While today’s market conditions remain supportive, the unprecedented pace of fleet expansion could eventually create similar challenges if oil transportation demand fails to keep pace with the incoming wave of new ships.

VLCC Orderbook

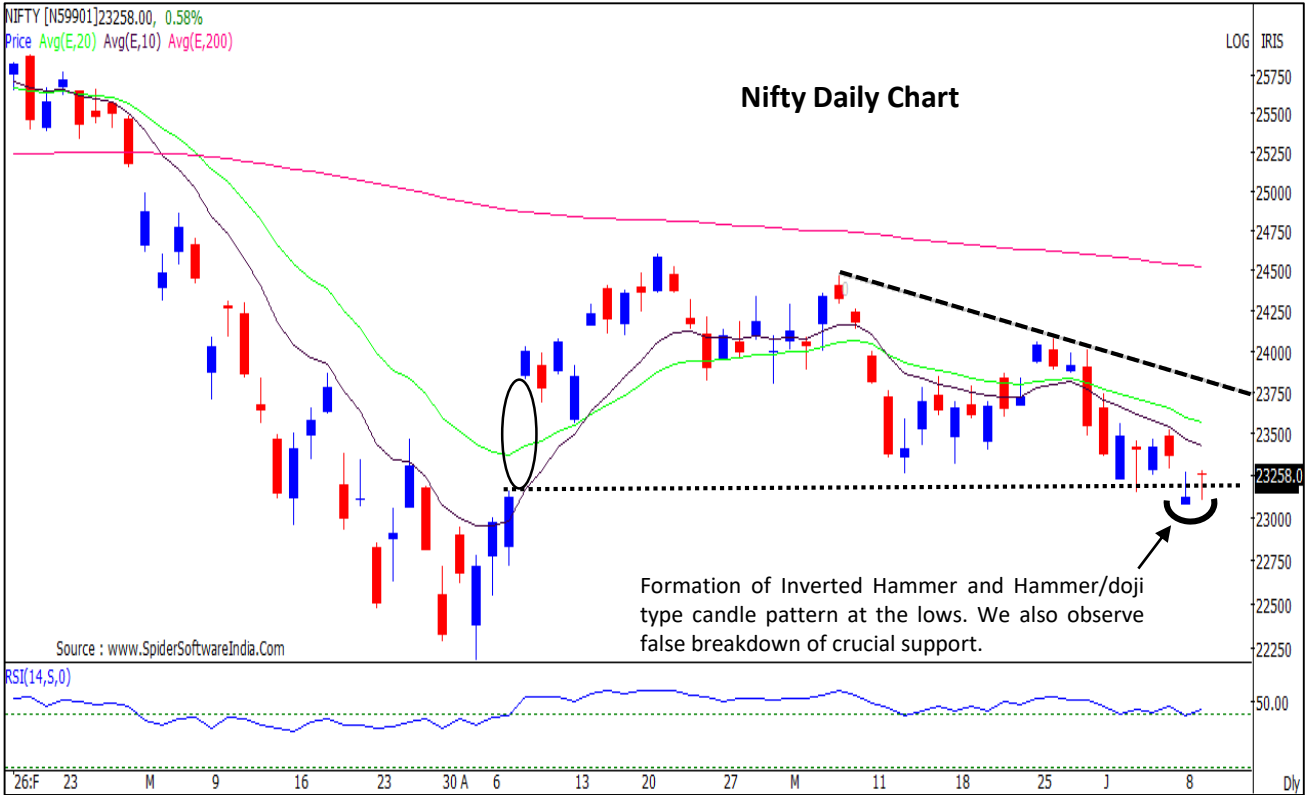
VLCC orderbook



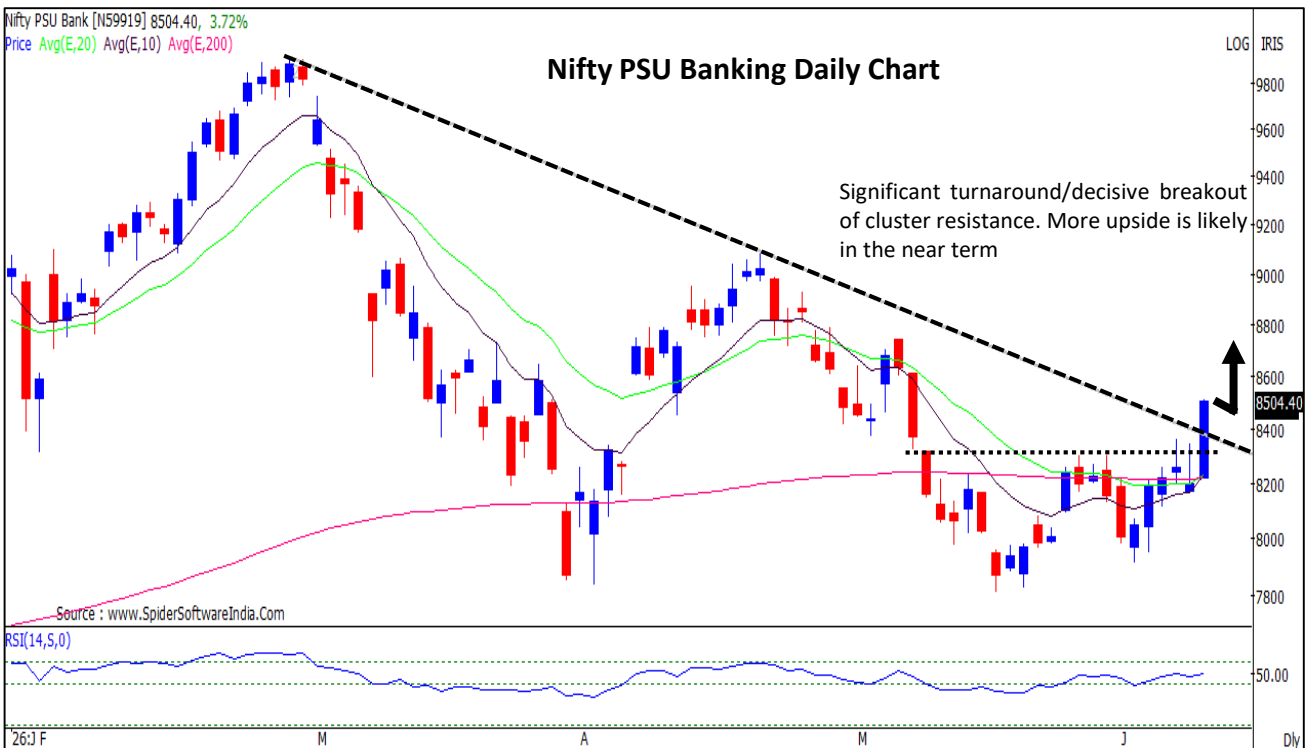
Source: Clarkson Research Services Ltd

Bloomberg

Nifty : Comeback of Bulls after violating the important support. More upside is likely in the short term. Key upside to be watched at 23500.



Nifty PSU Banking : Sharp breakout of crucial hurdles. PSU Banking stocks could be in limelight.



F&O Highlights

SHORT COVERING WAS SEEN IN THE NIFTY & BANKNIFTY FUTURES

Create longs with the SL of 23150 levels.

- After two consecutive sessions of decline, the Nifty rebounded strongly, gaining 119 points to close at 23,243. The index opened higher by 136 points but failed to sustain early gains, slipping over 150 points from the morning high. However, a sharp recovery in the second half helped the index end near the day's high.
- Short Covering was seen in the Nifty Futures where Open Interest fell by 0.54% with Nifty rising by 0.52%.
- Short Covering was seen in the Bank Nifty Futures where Open Interest fell by 3.18% with Bank Nifty rising by 2.09%.
- Nifty Open Interest Put Call ratio rose to 1.06 levels from 0.99 levels.
- Amongst the Nifty options (16-Jun Expiry), Call writing is seen at 23400-23500 levels, indicating Nifty is likely to find strong resistance in the vicinity of 23400-23500 levels. On the lower side, an immediate support is placed in the vicinity of 23200-23100 levels where we have seen Put writing.
- Long build-up was seen by FII's in the Index Futures segment where they net bought worth 186 cr with their Open Interest going up by 12107 contracts.

Index	Expected Trend	Prev. Close	Recommendations	Stop Loss	Target
NIFTY FUT	UP	23331.10	BUY AROUND 23250	23150	23400
BANK NIFTY FUT	UP	55375.60	BUY AROUND 55200	54900	55800

Nifty 50 Snapshot			
	09-Jun-26	08-Jun-26	% Chg.
Nifty Spot	23242.10	23123.00	0.52
Nifty Futures	23331.10	23174.60	0.68
Premium/ (Discount)	89.00	51.60	N.A.
Open Interest (OI)	2.16	2.17	-0.54
Nifty PCR	1.06	0.99	7.29

Bank Nifty Snapshot			
	09-Jun-26	08-Jun-26	% Chg.
Bank Nifty Spot	55194.50	54063.75	2.09
Bank Nifty Futures	55375.60	54242.00	2.09
Premium/ (Discount)	181.10	178.25	N.A.
Open Interest (OI)	0.26	0.27	-3.18
Bank Nifty PCR	0.94	0.86	9.13

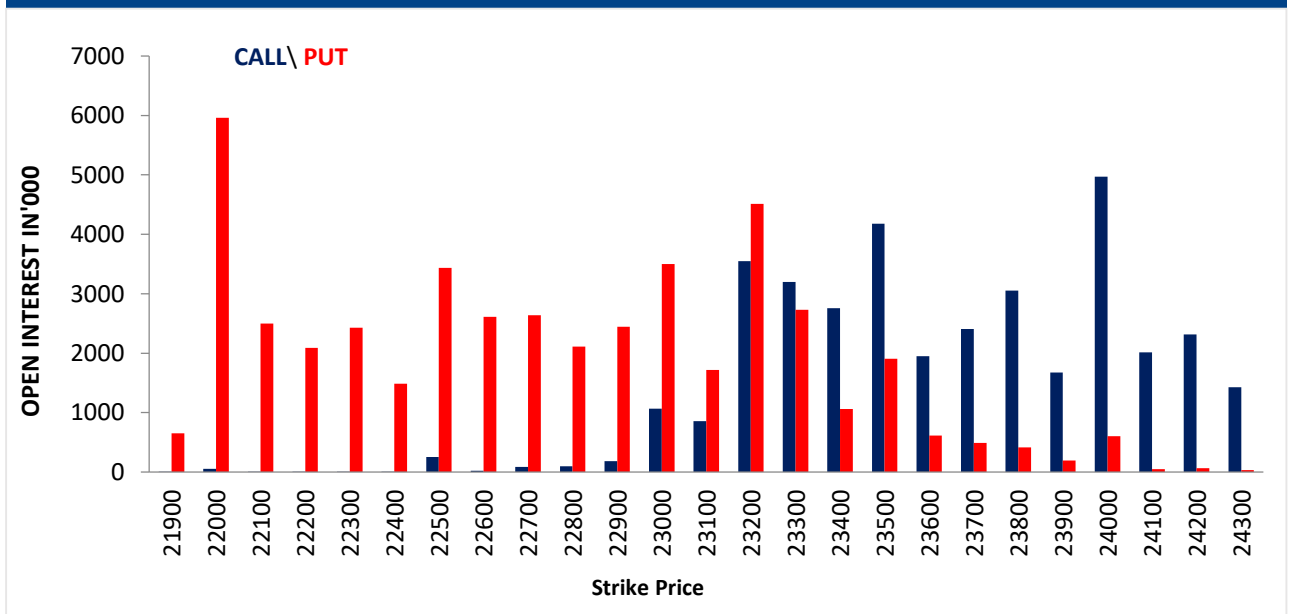
Nifty Options Highest OI (Weekly)			
CALL		PUT	
Strike Price	Open Interest (Contracts)	Strike Price	Open Interest (Contracts)
24000	76473	22000	91675

FII Activity on 09 June 2026

	BUY		SELL		NET (Rs Cr)	OPEN INTEREST	
	Contracts	Value (Rs Cr)	Contracts	Value (Rs Cr)		Contracts	Value (Rs Cr)
Index Futures	15107	2411	14494	2226	186	339341	52702
Nifty Futures	6008	908	12043	1818	-911	262313	39799
Bank Nifty Fut.	8885	1468	2020	334	1134	56306	9356
Index Options	17877264	2706514	17806343	2696076	10438	2373711	367044
Nifty Options	17593179	2658944	17528118	2649594	9350	1796406	271390
Bank Nifty Opt.	258570	43275	253108	42271	1004	527763	87389
Stock Futures	284230	18905	245768	16031	2874	7354913	452544
Stock Options	274620	18190	275170	18210	-20	892384	55664

FII's Open Interest (Contracts)

Date	Index Futures	Nifty Futures	Bank Nifty Futures	Index Options	Nifty Options	Bank Nifty Options	Stock Futures	Stock Options
09-Jun-26	339341	262313	56306	2373711	1796406	527763	7354913	892384
08-Jun-26	327234	255176	51553	3089037	2554922	488877	7333401	840344
NET (CONTRACTS)	12107	7137	4753	-715326	-758516	38886	21512	52040

Nifty Weekly (16 – June) Option Open Interest Distribution


Top Gainers OI Wise		
Company	Future OI (%)	Price (%)
APOLLOHOSP	12.04	1.98
BANKINDIA	7.34	5.45
POLICYBZR	7.04	-0.97
POWERINDIA	6.95	-1.14
HINDPETRO	6.24	2.48

Top Losers OI Wise		
Company	Future OI (%)	Price (%)
FEDERALBNK	-4.40	3.45
GODFRYPHLP	-4.19	3.63
OIL	-3.48	-1.05
NYKAA	-3.41	2.59
IDFCFIRSTB	-3.24	3.16

Top Gainers Price Wise		
Company	Future OI (%)	Price (%)
PIIND	4.62	6.92
BANKBARODA	3.11	5.59
BANKINDIA	7.34	5.45
MOTILALOFS	-0.77	5.25
RBLBANK	1.02	4.65

Top Losers Price Wise		
Company	Future OI (%)	Price (%)
ONGC	-1.94	-2.13
TITAN	-1.64	-2.09
NTPC	2.04	-1.86
IDEA	3.45	-1.81
NAUKRI	-0.10	-1.66

Long Buildup		
Company	Future OI (%)	Price (%)
APOLLOHOSP	12.04	1.98
BANKINDIA	7.34	5.45
HINDPETRO	6.24	2.48
BANDHANBNK	5.75	1.99
PIIND	4.62	6.92

Short Buildup		
Company	Future OI (%)	Price (%)
POLICYBZR	7.04	-0.97
POWERINDIA	6.95	-1.14
DALBHARAT	5.23	-0.74
PERSISTENT	3.72	-0.93
IDEA	3.45	-1.81

Long Unwinding		
Company	Future OI (%)	Price (%)
OIL	-3.48	-1.05
AMBER	-2.62	-0.31
MAXHEALTH	-2.34	-0.43
ONGC	-1.94	-2.13
SHREECEM	-1.93	-0.51

Short Covering		
Company	Future OI (%)	Price (%)
FEDERALBNK	-4.40	3.45
GODFRYPHLP	-4.19	3.63
NYKAA	-3.41	2.59
IDFCFIRSTB	-3.24	3.16
MCX	-3.19	0.04

Securities In Ban For Trade – 10.06.2026	
No.	Company Name
1.	AMBER
2.	KAYNES

Economic Calendar

Wednesday	Thursday	Friday	Monday	Tuesday
10 Jun	11 Jun	12 Jun	15 Jun	16 Jun
China: CPI US: MBA Mortgage, CPI, Core CPI, Fed Budget Balance	EU: ECB Monetary Policy US: Initial & Conti. Claims	Japan: IIP UK: GDP, Mfg. Prod., Trade Balance India: CPI US: Uni. of Mich. Sentiment	India: WPI EU: Trade Balance, IIP US: Empire Mfg., IIP, Mfg. Prod., Capacity Utilisation, NAHB Housing Mkt. Index India: Trade Balance	Japan: BoJ Monetary Policy China: New Home Price, Retail Sales, IIP US: ADP Emp., Housing Starts, Building permits

Open Derivatives Trading Calls

NO	RECO DT	RECO	COMPANY NAME	BUY RANGE	CMP	SL	TARGET	UPSIDE %	VALID TILL
1	9-JUN-26	BUY	NIFTY JUNE FUT	23250-23318	23,347.0	23200	23518	0.7	30-JUN-26
2	9-JUN-26	BUY	MIDCAP NIFTY 30TH JUNE 14100 CALL OPTION	366.4	364.5	290	550	50.9	30-JUN-26
3	8-JUN-26	BUY	GMR AIRPORT JUNE FUT	103.15-99.50	103.4	97.8	115	11.2	30-JUN-26
4	9-JUN-26	BUY	PNB JULY FUT	107.5-110	111.0	105	120	8.2	28-JUL-26
5	9-JUN-26	BUY	UNION BANK JUNE FUT	170.12-166	171.4	163	178	3.9	30-JUN-26

Open Short-Term MTF Calls

NO.	RECO DT.	RECO	COMPANY NAME	BUY RANGE	CMP	Lower Band	SL	TARGET	UPSIDE %	VALID TILL
1	25-MAY-26	BUY	MOLD-TEK	707-701.55	693.7	680	665	750	8.1	12-JUN-26
2	2-JUN-26	BUY	JSW CEMENT	127.7-128.50	126.77	123.5	121.5	135.5	6.9	16-JUN-26
3	4-JUN-26	BUY	KALYAN JEWELLERS	360.90-363	355.05	351	345	380	7.0	25-JUN-26
4	4-JUN-26	BUY	ANANT RAJ INDUSTRIES	570-575	540.75	540	528	645	19.3	18-JUN-26
5	4-JUN-26	BUY	ENGINEERS INDIA	279-239	239.37	231	226	255	6.5	18-JUN-26
6	8-JUN-26	BUY	TCI	970-964.65	974.9	950	935	1050	7.7	22-JUN-26
7	9-JUN-26	BUY	STEEL STRIPS	231-229.50	234.6	222	218	246	4.9	23-JUN-26
8	9-JUN-26	BUY	CERA SANITARYWARE	5670-5725	5835	5504	5400	6040	3.5	23-JUN-26
9	9-JUN-26	BUY	BANK OF INDIA	146.50-145.91	147.72	142.5	139	155	4.9	30-JUN-26
10	9-JUN-26	BUY	IDFC FIRST BANK	73.80-74.20	73.69	72	70.8	78	5.8	30-JUN-26

Open Positional MTF Calls

NO.	RECO DT.	RECO	COMPANY NAME	BUY RANGE	CMP	SL	TARGET 1	TARGET 2	UPSIDE %	VALID TILL
1	14-MAY-26	BUY	MODEFENCE	100.95-102.50	100.1	95.5	107.0	110	9.9	13-JUL-26
2	19-MAY-26	BUY	SANDUR MANGANESE	225.90-230	218.6	206.0	248.0	271	24.0	18-JUL-26
3	19-MAY-26	BUY	PDSL*	293-299	306.0	293.0	320.0	339	10.8	18-JUL-26
4	21-MAY-26	BUY	OBEROI REALTY	1663-1680	1632.5	1558.0	1795.0	1870	14.5	5-JUL-26
5	21-MAY-26	BUY	HDFCNIFBAN	55.60-55.23	56.6	52.5	59.0	62	9.6	19-AUG-26
6	26-MAY-26	BUY	CHAMBAL FERTILIZERS	475-484	454.8	438.0	518.0	550	20.9	25-JUL-26
7	4-JUN-26	BUY	AETHER	1150-1140.50	1135.0	1060.0	1235.0	1300	14.5	3-AUG-26
8	5-JUN-26	BUY	ELECON	533-528.75	532.9	490.0	575.0	610	14.5	4-AUG-26

*= 1st Target Achieved

Open Derivative Strategy

NO.	RECO DT.	RECO	INDEX	RECO PRICE	MAX Profit	MAX LOSS	VALID TILL
1	2-Jun-26	Buy	BANK NIFTY (30-JUN) 53500 PUT	935	9300	5700	30-Jun-26
		Sell	BANK NIFTY (30-JUN) 53000 PUT	745			

NSE 200 SUPPORT & RESISTANCE

SYMBOL	CLOSE	PIVOT	SUPT 2	SUPT 1	RESI 1	RESI 2	52 W H	52 W L	30 D % CHG
360ONE	1075.0	1071.5	1044.9	1059.9	1086.5	1098.1	1273.8	906.1	-3.44
ABB	6931.0	6967.5	6812.0	6871.5	7027.0	7123.0	7822.5	4637.5	-1.16
ABCAPITAL	351.4	349.2	340.7	346.0	354.6	357.8	376.0	235.0	-3.28
ADANIENSOL	1579.2	1578.7	1537.7	1558.5	1599.5	1619.7	1614.8	744.9	16.06
ADANIENT	2979.9	2971.5	2908.7	2944.3	3007.1	3034.3	3059.8	1753.0	18.66
ADANIGREEN	1510.0	1510.0	1510.0	1510.0	1510.0	1510.0	1544.8	765.0	13.00
ADANIPOWER	1826.4	1817.1	1776.9	1801.7	1841.9	1857.3	1842.8	1290.5	3.69
ALKEM	5355.5	5360.3	5271.8	5313.7	5402.2	5448.8	5933.5	4716.2	-4.71
AMBUJACEM	416.0	415.5	410.3	413.2	418.3	420.6	625.0	394.0	-6.54
APLAPOLLO	1799.0	1806.9	1769.5	1784.3	1821.7	1844.3	2301.4	1492.0	-7.68
APOLLOHOSP	8524.0	8476.0	8303.0	8413.5	8586.5	8649.0	8538.5	6696.5	5.35
ASHOKLEY	143.8	143.1	139.7	141.8	145.1	146.4	215.4	115.0	-14.46
ASIANPAINT	2708.1	2696.2	2638.7	2673.4	2730.9	2753.7	2985.7	2115.0	4.12
ASTRAL	1526.0	1522.9	1503.5	1514.7	1534.1	1542.3	1768.7	1263.7	-2.47
ATGL	752.2	749.5	729.2	740.7	760.9	769.7	859.9	462.8	18.83
AUBANK	978.5	972.7	951.3	964.9	986.3	994.1	1079.6	682.2	-6.70
AUROPHARMA	1449.0	1452.0	1421.0	1435.0	1466.0	1483.0	1550.0	1016.1	-3.18
AXISBANK	1292.4	1287.4	1260.5	1276.5	1303.4	1314.3	1418.3	1042.5	2.06
BAJAJ-AUTO	10184.0	10226.0	10032.0	10108.0	10302.0	10420.0	10834.0	7858.5	-4.78
BAJAJFINSV	1693.1	1687.7	1664.0	1678.5	1702.2	1711.4	2195.0	1597.0	-7.10
BAJAJHLDNG	10253.0	10134.3	9724.3	9988.7	10398.7	10544.3	14763.0	8588.0	-3.88
BAJFINANCE	886.9	882.6	865.9	876.4	893.1	899.2	1102.5	787.9	-7.16
BANKBARODA	273.8	269.5	255.7	264.7	278.5	283.3	325.5	230.5	3.64
BANKINDIA	147.7	145.3	137.5	142.6	150.4	153.1	178.4	108.8	5.60
BDL	1202.8	1200.6	1179.7	1191.2	1212.1	1221.5	2013.5	1086.0	-16.69
BEL	412.1	413.0	406.0	409.0	416.0	420.0	473.5	361.2	-6.17
BHARATFORG	1925.4	1927.8	1876.6	1901.0	1952.2	1979.0	2044.0	1100.5	-3.50
BHARTIARTL	1799.0	1808.4	1760.6	1779.8	1827.6	1856.2	2174.5	1740.5	-1.99
BHEL	396.6	393.0	380.7	388.6	401.0	405.4	424.9	205.1	-2.17
BIOCON	416.4	414.6	407.1	411.7	419.2	422.1	440.4	330.9	9.67
BLUESTARCO	1570.8	1565.5	1541.5	1556.1	1580.1	1589.5	2040.0	1450.0	-7.19
BOSCHLTD	37820.0	37518.3	36273.3	37046.7	38291.7	38763.3	41945.0	28610.0	-0.85
BPCL	289.1	288.2	283.3	286.2	291.1	293.1	391.7	266.6	-4.57
BRITANNIA	5107.5	5098.7	5037.2	5072.3	5133.8	5160.2	6336.0	5035.0	-7.20
BSE	3996.3	3993.3	3911.2	3953.8	4035.9	4075.4	4446.8	2021.5	2.32
CANBK	137.5	135.6	129.2	133.3	139.7	142.0	162.9	103.6	2.58
CGPOWER	911.2	912.5	896.8	904.0	919.7	928.2	952.0	525.5	4.29
CHOLAFIN	1495.4	1484.8	1443.9	1469.7	1510.6	1525.7	1831.5	1299.4	-10.41
CIPLA	1376.5	1383.0	1357.8	1367.1	1392.3	1408.2	1673.0	1165.7	2.00
COALINDIA	466.9	464.3	455.1	461.0	470.2	473.4	491.3	368.7	2.14
COCHINSHIP	1441.2	1431.5	1392.6	1416.9	1455.8	1470.4	2418.6	1187.0	-18.67
COFORGE	1412.0	1415.1	1368.7	1390.4	1436.8	1461.5	1994.0	1008.1	3.06
COLPAL	2023.4	2017.7	1989.9	2006.7	2034.5	2045.5	2504.0	1782.0	-7.99
CONCOR	453.0	450.6	441.4	447.2	456.4	459.8	650.7	421.5	-15.31
COROMANDEL	1807.1	1790.9	1716.4	1761.7	1836.2	1865.4	2718.9	1706.5	-5.82
CUMMINSIND	5625.5	5625.8	5495.8	5560.7	5690.7	5755.8	6100.0	3212.2	4.44
DABUR	426.2	424.5	417.9	422.0	428.7	431.2	577.0	403.4	-12.45
DIVISLAB	6753.0	6692.7	6437.7	6595.3	6850.3	6947.7	7071.5	5636.5	0.69
DIXON	11611.0	11558.0	11301.0	11456.0	11713.0	11815.0	18471.0	9600.0	7.53

NSE 200 SUPPORT & RESISTANCE

SYMBOL	CLOSE	PIVOT	SUPT 2	SUPT 1	RESI 1	RESI 2	52 W H	52 W L	30 D % CHG
DLF	575.2	571.8	557.7	566.4	580.5	585.9	886.8	489.4	-5.53
DMART	4092.0	4104.0	4024.0	4058.0	4138.0	4184.0	4949.5	3529.0	-7.35
DRREDDY	1268.5	1272.5	1246.3	1257.4	1283.6	1298.7	1379.7	1148.4	-1.82
EICHERMOT	7203.0	7184.0	6935.0	7069.0	7318.0	7433.0	8230.0	5219.5	-1.61
ENRIN	3547.5	3542.1	3465.4	3506.4	3583.1	3618.8	3968.0	2115.0	11.74
ETERNAL	245.7	247.0	238.6	242.1	250.6	255.5	368.5	212.6	-4.27
EXIDEIND	393.0	391.6	385.4	389.2	395.4	397.8	431.0	287.0	8.32
FEDERALBNK	315.1	312.5	302.9	309.0	318.6	322.0	315.9	185.1	6.21
FORTIS	989.8	989.7	976.6	983.2	996.3	1002.9	1104.3	742.2	3.58
GAIL	167.6	167.4	163.9	165.7	169.3	171.0	202.8	134.4	0.68
GLENMARK	2209.6	2198.2	2141.3	2175.5	2232.4	2255.1	2474.0	1589.0	-6.85
GMRAIRPORT	102.6	102.2	99.8	101.2	103.6	104.7	110.4	79.9	1.26
GODFRYPHLP	2263.2	2242.4	2150.4	2206.8	2298.8	2334.4	3947.0	1832.1	-6.38
GODREJCP	1013.2	1008.4	987.7	1000.4	1021.1	1029.1	1309.0	967.1	-2.87
GODREJPROP	1684.3	1676.1	1644.1	1664.2	1696.2	1708.1	2506.5	1434.0	-10.17
GRASIM	3095.5	3090.9	3049.2	3072.4	3114.1	3132.6	3197.5	2502.5	4.29
GROWWW	195.3	193.3	186.0	190.6	197.9	200.5	227.2	112.0	-4.56
GVT&D	4931.0	4892.8	4708.3	4819.7	5004.2	5077.3	5222.1	2204.0	6.78
HAL	4263.8	4241.2	4157.3	4210.6	4294.5	4325.1	5147.0	3479.1	-10.80
HAVELLS	1150.5	1147.5	1131.6	1141.1	1157.0	1163.4	1621.1	1123.6	-8.37
HCLTECH	1146.3	1147.2	1124.6	1135.5	1158.1	1169.8	1780.1	1103.4	-4.18
HDFCAMC	2503.3	2486.5	2424.4	2463.9	2526.0	2548.6	2967.3	2205.6	-12.31
HDFCBANK	738.4	738.2	726.6	732.5	744.1	749.9	1020.5	726.7	-5.27
HDFCLIFE	560.6	563.5	549.2	554.9	569.2	577.7	820.8	555.1	-9.92
HEROMOTOCO	4855.4	4832.1	4728.5	4791.9	4895.5	4935.7	6388.5	4190.0	-8.87
HINDALCO	1076.7	1071.0	1042.3	1059.5	1088.2	1099.7	1176.0	635.0	2.83
HINDPETRO	382.0	379.2	368.1	375.1	386.1	390.2	508.5	316.2	-1.12
HINDUNILVR	2132.8	2127.2	2098.7	2115.7	2144.2	2155.7	2750.0	2022.5	-6.68
HINDZINC	563.7	564.3	547.9	555.8	572.1	580.6	733.0	413.5	-11.07
HUDCO	209.0	207.6	201.9	205.5	211.2	213.3	251.5	159.0	-10.34
HYUNDAI	1898.6	1899.1	1857.8	1878.2	1919.5	1940.4	2890.0	1658.0	2.22
ICICIAMC	3248.0	3265.3	3193.5	3220.7	3292.5	3337.1	3611.0	2530.0	0.49
ICICIBANK	1275.0	1269.2	1242.0	1258.5	1285.7	1296.4	1500.0	1187.6	0.89
ICICIGI	1777.7	1772.8	1708.8	1743.3	1807.3	1836.8	2068.7	1629.5	-3.06
IDEA	14.1	14.3	13.5	13.8	14.7	15.2	15.3	6.1	26.42
IDFCFIRSTB	73.7	73.4	71.0	72.3	74.8	75.9	87.0	58.1	3.41
INDHOTEL	666.7	663.7	651.9	659.3	671.1	675.4	812.0	565.0	-1.04
INDIANB	875.0	866.7	836.0	855.5	886.2	897.5	1000.9	606.0	1.32
INDIGO	4537.6	4486.8	4313.9	4425.8	4598.7	4659.7	6232.5	3895.2	0.20
INDUSINDBK	922.8	915.6	883.7	903.2	935.2	947.6	968.9	710.6	-2.71
INDUSTOWER	419.4	423.1	409.0	414.2	428.3	437.2	481.5	312.6	3.78
INFY	1180.3	1180.4	1154.1	1167.2	1193.5	1206.7	1728.0	1089.0	0.21
IOC	138.1	137.6	135.6	136.8	138.9	139.7	189.0	130.2	-4.43
IRCTC	517.9	517.8	513.3	515.6	520.1	522.3	798.6	492.7	-8.21
IREDA	122.5	121.9	118.7	120.6	123.8	125.1	186.6	108.7	-8.98
IRFC	96.0	95.7	94.5	95.3	96.5	96.9	149.0	87.0	-9.44
ITC	280.0	279.6	275.1	277.5	282.1	284.2	428.6	275.1	-8.93
JINDALSTEL	1149.9	1153.9	1129.0	1139.5	1164.4	1178.8	1306.2	882.7	-8.04
JIOFIN	234.2	232.8	227.8	231.0	235.9	237.7	338.6	223.3	-6.07
JSWENERGY	570.4	573.8	557.9	564.2	580.1	589.7	617.4	427.8	-0.06

NSE 200 SUPPORT & RESISTANCE

SYMBOL	CLOSE	PIVOT	SUPT 2	SUPT 1	RESI 1	RESI 2	52 W H	52 W L	30 D % CHG
JSWSTEEL	1261.7	1263.9	1248.0	1254.9	1270.8	1279.8	1328.0	981.4	-1.46
JUBLFOOD	422.8	419.8	407.2	415.0	427.6	432.3	719.0	408.8	-10.63
KALYANKJIL	355.1	356.6	343.9	349.5	362.2	369.3	617.7	337.0	-16.31
KEI	5281.0	5240.0	5063.0	5172.0	5349.0	5417.0	5476.3	3525.3	3.47
KOTAKBANK	381.7	380.5	375.3	378.5	383.7	385.6	453.2	345.5	0.35
KPITTECH	756.2	758.4	731.5	743.8	770.8	785.4	1434.5	624.9	3.68
LAURUSLABS	1424.4	1421.4	1381.2	1402.8	1443.0	1461.6	1457.0	641.1	15.53
LENSKART	503.4	504.9	493.1	498.3	510.0	516.6	557.7	356.1	3.08
LGEINDIA	1541.5	1532.5	1496.4	1518.9	1555.0	1568.6	1749.0	1304.1	2.50
LICHSGFIN	552.8	548.9	535.0	543.9	557.8	562.9	646.5	458.9	-5.07
LODHA	887.9	881.7	848.9	868.4	901.2	914.5	1531.0	650.8	-7.51
LT	3900.6	3903.5	3863.6	3882.1	3922.0	3943.4	4440.0	3288.1	-1.77
LTF	265.6	264.7	260.1	262.8	267.5	269.4	329.5	180.6	-12.24
LTM	3999.9	3991.0	3940.1	3970.0	4020.9	4041.9	6429.5	3901.0	-7.88
LUPIN	2264.2	2261.0	2236.9	2250.5	2274.6	2285.1	2494.0	1836.8	-4.90
M&M	2990.1	2993.3	2951.4	2970.8	3012.7	3035.2	3839.9	2896.0	-9.98
M&MFIN	285.0	284.2	280.0	282.5	286.7	288.4	412.2	246.4	-15.81
MANKIND	2391.0	2382.6	2343.9	2367.4	2406.1	2421.3	2716.5	1909.7	-1.56
MARICO	813.2	810.9	800.8	807.0	817.1	820.9	848.8	680.3	-2.14
MARUTI	13120.0	13042.7	12736.7	12928.3	13234.3	13348.7	17370.0	12176.0	-4.42
MAXHEALTH	1003.1	1003.7	987.3	995.2	1011.6	1020.0	1314.3	903.0	-0.94
MAZDOCK	2435.3	2424.8	2375.9	2405.6	2454.5	2473.7	3437.4	2057.4	-8.14
MCX	2824.8	2845.0	2725.3	2775.1	2894.8	2964.7	3480.0	1460.8	-8.74
MFSL	1594.1	1589.6	1562.4	1578.2	1605.4	1616.8	1892.5	1433.6	-5.84
MOTHERSON	144.1	143.0	139.1	141.6	145.5	146.9	151.8	89.7	8.76
MOTILALOFS	864.3	853.1	810.4	837.4	880.0	895.7	1097.1	614.9	-1.64
MPHASIS	2340.5	2336.3	2276.8	2308.7	2368.2	2395.8	3037.2	2013.0	5.50
MRF	122750	123008	121923	122337	123422	124093	163600	122000	-5.98
MUTHOOTFIN	2991.1	2980.1	2913.4	2952.3	3019.0	3046.8	4149.5	2461.1	-14.96
NATIONALUM	383.9	379.8	364.7	374.3	389.4	394.9	445.2	179.9	-4.22
NAUKRI	982.6	989.0	949.5	966.1	1005.5	1028.4	1550.0	908.3	0.37
NESTLEIND	1410.4	1408.1	1392.9	1401.7	1416.9	1423.3	1498.1	1084.7	-4.89
NHPC	74.0	73.9	72.9	73.5	74.4	74.8	92.3	71.6	-8.51
NMDC	90.0	90.0	88.4	89.2	90.8	91.6	97.5	66.8	1.45
NTPC	355.7	358.1	349.4	352.5	361.2	366.8	414.4	315.6	-11.49
NYKAA	267.1	265.5	257.3	262.2	270.4	273.7	285.6	191.2	-2.14
OBEROIRLTY	1632.5	1625.3	1590.8	1611.7	1646.2	1659.8	2005.0	1391.2	-3.76
OFSS	9639.5	9645.2	9217.2	9428.3	9856.3	10073.2	10584.5	6234.5	3.38
OIL	476.0	476.2	461.9	468.9	483.2	490.5	531.0	384.6	4.80
ONGC	259.0	260.9	253.7	256.4	263.6	268.1	307.5	228.6	-7.04
PAGEIND	38905.0	38743.3	38068.3	38486.7	39161.7	39418.3	50590.0	29805.0	4.22
PATANJALI	422.1	422.5	417.2	419.6	424.9	427.8	653.9	408.2	-8.50
PAYTM	1072.0	1060.6	1019.5	1045.7	1086.8	1101.7	1381.8	857.2	-9.61
PERSISTENT	5018.0	5041.3	4857.3	4937.7	5121.7	5225.3	6599.0	4449.1	-1.77
PFC	435.6	434.4	426.1	430.9	439.2	442.7	486.5	329.9	-5.56
PHOENIXLTD	1754.1	1750.5	1710.5	1732.3	1772.3	1790.5	1993.0	1402.5	-4.33
PIDILITIND	1481.8	1478.5	1454.7	1468.3	1492.1	1502.3	1575.0	1259.0	0.61
PIIND	2866.4	2811.0	2629.5	2747.9	2929.4	2992.5	4330.0	2657.2	-7.89
PNB	109.7	108.5	104.6	107.1	111.1	112.5	135.2	98.5	2.48
POLICYBZR	1497.3	1500.1	1453.7	1475.5	1521.9	1546.5	1978.0	1364.0	-8.46

NSE 200 SUPPORT & RESISTANCE									
SYMBOL	CLOSE	PIVOT	SUPT 2	SUPT 1	RESI 1	RESI 2	52 W H	52 W L	30 D % CHG
POLYCAB	9615.5	9579.0	9304.5	9460.0	9734.5	9853.5	9833.0	5760.0	6.18
POWERGRID	285.7	287.8	279.5	282.6	290.9	296.1	325.0	250.0	-9.06
POWERINDIA	34610.0	34623.3	33463.3	34036.7	35196.7	35783.3	38785.0	16111.0	1.90
PREMIERENE	1086.7	1089.9	1065.0	1075.8	1100.7	1114.8	1136.4	660.0	7.26
PRESTIGE	1354.0	1349.1	1322.4	1338.2	1364.9	1375.8	1814.0	1090.0	-10.66
RADICO	3500.7	3496.2	3436.2	3468.5	3528.5	3556.2	3679.0	2500.0	0.69
RECLTD	352.1	349.5	340.1	346.1	355.5	358.8	428.7	304.1	-2.06
RELIANCE	1269.2	1267.0	1250.3	1259.7	1276.4	1283.7	1611.8	1257.5	-11.35
RVNL	233.9	233.8	228.7	231.3	236.4	239.0	442.8	227.0	-23.18
SAIL	186.0	185.9	182.8	184.4	187.5	189.1	209.7	118.1	0.61
SBICARD	585.0	582.1	572.1	578.5	588.6	592.2	1027.3	571.3	-9.27
SBILIFE	1769.1	1768.6	1741.2	1755.2	1782.6	1796.0	2132.0	1720.0	-5.56
SBIN	1002.7	998.2	972.2	987.5	1013.5	1024.2	1234.7	781.7	-1.49
SHREECEM	23415.0	23443.3	23108.3	23261.7	23596.7	23778.3	32490.0	22550.0	-8.04
SHRIRAMFIN	911.7	907.8	889.6	900.6	918.9	926.1	1108.0	566.5	-9.49
SIEMENS	3619.8	3607.6	3550.7	3585.3	3642.2	3664.5	3937.3	2826.0	-5.31
SOLARINDS	18267.0	18266.7	18027.7	18147.3	18386.3	18505.7	18874.0	11646.0	13.32
SRF	2689.6	2698.7	2638.1	2663.9	2724.5	2759.3	3325.0	2355.0	-3.33
SUNPHARMA	1779.0	1780.6	1750.1	1764.5	1795.0	1811.1	1916.6	1548.0	-3.67
SUPREMEIND	3499.7	3503.5	3437.4	3468.5	3534.6	3569.6	4739.0	3182.0	-4.27
SUZLON	55.2	55.0	54.1	54.7	55.6	56.0	69.5	38.2	0.27
SWIGGY	250.0	246.4	234.2	242.1	254.3	258.6	474.0	238.5	-10.87
TATACAP	322.9	319.6	305.7	314.3	328.1	333.4	367.3	296.0	0.76
TATACOMM	1975.8	1958.8	1869.7	1922.8	2011.9	2047.9	2049.9	1322.5	23.85
TATACONSUM	1106.5	1105.7	1082.3	1094.4	1117.8	1129.1	1282.7	1007.2	-5.89
TATAELXSI	4257.2	4249.4	4168.5	4212.8	4293.7	4330.3	6735.0	3945.0	-1.37
TATAINVEST	662.7	659.4	644.1	653.4	668.7	674.8	1184.7	538.9	-7.42
TATAPOWER	398.7	400.6	390.6	394.6	404.7	410.7	464.9	342.5	-8.75
TATASTEEL	203.2	202.5	198.8	201.0	204.7	206.2	224.4	149.8	-5.13
TCS	2151.0	2152.6	2111.4	2131.2	2172.4	2193.8	3538.0	2132.8	-10.12
TECHM	1483.8	1491.8	1446.6	1465.2	1510.4	1537.0	1854.0	1304.1	1.61
TIINDIA	3105.5	3111.9	3001.9	3053.7	3163.7	3221.9	3419.9	2164.9	2.24
TITAN	4104.9	4136.4	4006.6	4055.7	4185.5	4266.2	4605.0	3303.1	-9.07
TMCV	363.3	365.2	357.0	360.1	368.4	373.5	509.0	306.3	-15.21
TMPV	387.8	390.0	381.4	384.6	393.2	398.7	744.0	294.3	9.13
TORNTPHARM	4472.9	4461.1	4376.8	4424.8	4509.1	4545.4	4712.9	3140.1	1.95
TRENT	2771.3	2768.8	2696.2	2733.7	2806.3	2841.4	4174.0	2183.7	-2.18
TVSMOTOR	3358.0	3351.9	3304.2	3331.1	3378.8	3399.6	3970.0	2655.1	-9.13
ULTRACEMCO	10911.0	10888.7	10677.7	10794.3	11005.3	11099.7	13110.0	10325.0	-8.58
UNIONBANK	170.4	168.9	163.3	166.8	172.5	174.6	205.5	124.6	2.43
UNITDSPR	1257.2	1252.9	1229.5	1243.4	1266.8	1276.3	1645.0	1210.8	-2.12
UPL	628.4	627.0	618.4	623.4	632.0	635.7	812.2	565.2	-2.40
VBL	529.8	528.3	520.9	525.3	532.7	535.7	544.4	381.0	3.92
VEDL	306.3	306.4	299.9	303.1	309.6	313.0	795.0	268.7	3.37
VMM	118.3	117.9	116.2	117.2	118.9	119.6	157.6	98.8	-4.78
VOLTAS	1304.4	1298.4	1265.2	1284.8	1318.0	1331.6	1582.5	1186.8	-1.83
WAAREEENER	3040.8	3039.0	2975.3	3008.1	3071.8	3102.7	3865.0	2403.0	-5.85
WIPRO	181.7	182.2	178.5	180.1	183.8	186.0	273.1	180.6	-8.09
YESBANK	23.4	23.3	22.9	23.1	23.6	23.8	24.3	17.2	1.92
ZYDUSLIFE	1105.6	1100.7	1075.2	1090.4	1115.9	1126.2	1115.5	835.5	17.38

Disclosure & Disclaimer :

HDFC Securities Limited (HSL) is a SEBI Registered Research Analyst having registration no. INH000002475.

This report has been prepared by HDFC Securities Ltd and is solely for information of the recipient only. The report must not be used as a singular basis of any investment decision. The views herein are of a general nature and do not consider the risk appetite or the particular circumstances of an individual investor; readers are requested to take professional advice before investing. "This report may have been refined using AI tools to enhance clarity and readability."

Nothing in this document should be construed as investment advice. Each recipient of this document should make such investigations as they deem necessary to arrive at an independent evaluation of an investment in securities of the companies referred to in this document (including merits and risks) and should consult their own advisors to determine merits and risks of such investment. The information and opinions contained herein have been compiled or arrived at, based upon information obtained in good faith from sources believed to be reliable. Such information has not been independently verified and no guaranty, representation of warranty, express or implied, is made as to its accuracy, completeness or correctness. All such information and opinions are subject to change without notice. Descriptions of any company or companies or their securities mentioned herein are not intended to be complete. HSL is not obliged to update this report for such changes. HSL has the right to make changes and modifications at any time.

This report is not directed to, or intended for display, downloading, printing, reproducing or for distribution to or use by, any person or entity who is a citizen or resident or located in any locality, state, country or other jurisdiction where such distribution, publication, reproduction, availability or use would be contrary to law or regulation or what would subject HSL or its affiliates to any registration or licensing requirement within such jurisdiction.

If this report is inadvertently sent or has reached any person in such country, especially, United States of America, the same should be ignored and brought to the attention of the sender. This document may not be reproduced, distributed or published in whole or in part, directly or indirectly, for any purposes or in any manner.

Foreign currencies denominated securities, wherever mentioned, are subject to exchange rate fluctuations, which could have an adverse effect on their value or price, or the income derived from them. In addition, investors in securities such as ADRs, the values of which are influenced by foreign currencies effectively assume currency risk. It should not be considered to be taken as an offer to sell or a solicitation to buy any security.

This document is not, and should not, be construed as an offer or solicitation of an offer, to buy or sell any securities or other financial instruments. This report should not be construed as an invitation or solicitation to do business with HSL. HSL may from time to time solicit from, or perform broking, or other services for, any company mentioned in this mail and/or its attachments.

HSL and its affiliated company(ies), their directors and employees may; (a) from time to time, have a long or short position in, and buy or sell the securities of the company(ies) mentioned herein or (b) be engaged in any other transaction involving such securities and earn brokerage or other compensation or act as a market maker in the financial instruments of the company(ies) discussed herein or act as an advisor or lender/borrower to such company(ies) or may have any other potential conflict of interests with respect to any recommendation and other related information and opinions.

HSL, its directors, analysts or employees do not take any responsibility, financial or otherwise, of the losses or the damages sustained due to the investments made or any action taken on basis of this report, including but not restricted to, fluctuation in the prices of shares and bonds, changes in the currency rates, diminution in the NAVs, reduction in the dividend or income, etc.

HSL and other group companies, its directors, associates, employees may have various positions in any of the stocks, securities and financial instruments dealt in the report, or may make sell or purchase or other deals in these securities from time to time or may deal in other securities of the companies / organizations described in this report. As regards the associates of HSL please refer the website.

HSL or its associates might have managed or co-managed public offering of securities for the subject company or might have been mandated by the subject company for any other assignment in the past twelve months.

Please note that HDFC Securities has a proprietary trading desk. This desk maintains an arm's length distance with the Research team and all its activities are segregated from Research activities. The proprietary desk operates independently, potentially leading to investment decisions that may deviate from research views.

HSL or its associates might have received any compensation from the companies mentioned in the report during the period preceding twelve months from the date of this report for services in respect of managing or co-managing public offerings, corporate finance, investment banking or merchant banking, brokerage services or other advisory service in a merger or specific transaction in the normal course of business.

HSL or its analysts did not receive any compensation or other benefits from the companies mentioned in the report or third party in connection with preparation of the research report. Accordingly, neither HSL nor Research Analysts have any material conflict of interest at the time of publication of this report. Compensation of our Research Analysts is not based on any specific merchant banking, investment banking or brokerage service transactions. HSL may have issued other reports that are inconsistent with and reach different conclusion from the information presented in this report.

Research entity has not been engaged in market making activity for the subject company. Research analyst has not served as an officer, director or employee of the subject company. We have not received any compensation/benefits from the subject company or third party in connection with the Research Report.

HDFC securities Limited, I Think Techno Campus, Building - B, "Alpha", Office Floor 8, Near Kanjurmarg Station, Opp. Crompton Greaves, Kanjurmarg (East), Mumbai 400 042 Phone: (022) 3075 3400 Fax: (022) 2496 5066

Compliance Officer: Murli V Karkera Email: complianceofficer@hdfcsec.com Phone: (022) 3045 3600

For grievance redressal contact Customer Care Team Email: customer-care@hdfcsec.com Phone: (022) 3901 9400

HDFC Securities Limited, SEBI Reg. No.: NSE, BSE, MSEI, MCX: INZ000186937; AMFI Reg. No. ARN: 13549; PFRDA Reg. No. POP: 11092018; IRDA Corporate Agent License No.: CA0062; SEBI Research Analyst Reg. No.: INH000002475; SEBI Investment Adviser Reg. No.: INA000011538; CIN - U67120MH2000PLC152193

Investment in securities market are subject to market risks. Read all the related documents carefully before investing.

Mutual Funds Investments are subject to market risk. Please read the offer and scheme related documents carefully before investing.

Registration granted by SEBI, membership of BASL (in case of IAs) and certification from NISM in no way guarantee performance of the intermediary or provide any assurance of returns to investors.