

PRIME DAILY

June 11, 2026



U.S. stocks Fell Sharply as President Trump Threatens more Iran attacks

U.S. stocks tumbled sharply on Wednesday after President Donald Trump warned that talks with Iran were “taking too long” and threatened further action. The Dow plunged 953.33 points (1.87%) to 49,918.78, the S&P 500 slipped 1.62% to 7,266.99, and the Nasdaq Composite fell 1.98% to 25,169.50.

Semiconductor names again led the weakness. Micron Technology, Advanced Micro Devices and Broadcom all declined, marking their fourth down day in five sessions. The iShares Semiconductor ETF (SOXX) dropped more than 3%.

Some traders attribute selling in chip names to position adjustments ahead of Friday’s SpaceX IPO, with retail investors freeing up capital for what could be the largest IPO ever.

On the macro front, May’s core consumer price index (ex-food and energy) was a bit lower than expected at 0.2% month-on-month versus a 0.3% consensus. Year-on-year core CPI held at 2.9%, matching estimates but still above the Fed’s 2% target. Headline inflation, which includes all items, climbed above 4% for the first time in three years.

In commodities, gold plunged over 4% amid a stronger dollar and equity weakness, while oil rallied after fresh U.S. strikes on Iran stoked fears of prolonged supply disruptions. Brent August futures gained nearly 2% to about \$95 a barrel.

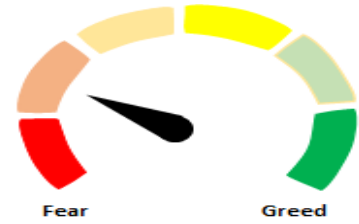
Asian markets opened lower, dragged by the Wall Street selloff and rising crude, with renewed U.S.-Iran tensions adding to risk-off sentiment.

Coming to our markets, Indian benchmark indices witnessed another volatile session yesterday, with the Nifty closing 27 points lower at 23,214. After a muted start the index rallied more than 200 points from early lows in the first half, but a sharp reversal in the second half erased gains.

The broader markets faced significant selling pressure, with the Microcap 250, Smallcap 100, and Midcap 100 all forming bearish engulfing patterns on the daily charts. After Monday’s outperformance, these indices lagged the benchmark yesterday, as the Nifty Midcap 100 and Smallcap 100 fell 1.49% and 1.33%, respectively. Market breadth weakened considerably, with the BSE advance-decline ratio sliding to 0.54.

Technically, Nifty remains in a downtrend, trading below all key moving averages. A decisive close below 23,000 could trigger further downside towards the 22,700–22,800 support zone, while 23,515 is expected to act as immediate resistance on any pullback.

Indian markets are expected to open lower on the back of weak global cues



Global Equity Indices

	Close	Abs. Change	% Change
Indian Indices			
Sensex	73,983	64.4 ▲	0.09%
Nifty	23,215	-27.2 ▼	-0.12%
Midcap	59,810	-905.3 ▼	-1.49%
Small cap	17,823	-241.1 ▼	-1.33%
US Indices			
Dow Jones	49,919	-953.3 ▼	-1.87%
S&P 500	7,267	-119.7 ▼	-1.62%
Nasdaq	25,170	-509.3 ▼	-1.98%
European Indices			
FTSE	10,255	27.5 ▲	0.27%
DAX	24,195	-237.8 ▼	-0.97%
CAC	8,162	-41.6 ▼	-0.51%
Asian Indices			
Shanghai	3,993	-16.8 ▼	-0.42%
Hang Seng	24,408	-157.9 ▼	-0.65%
Nikkei	62,686	-2730.6 ▼	-4.36%

Indices Futures

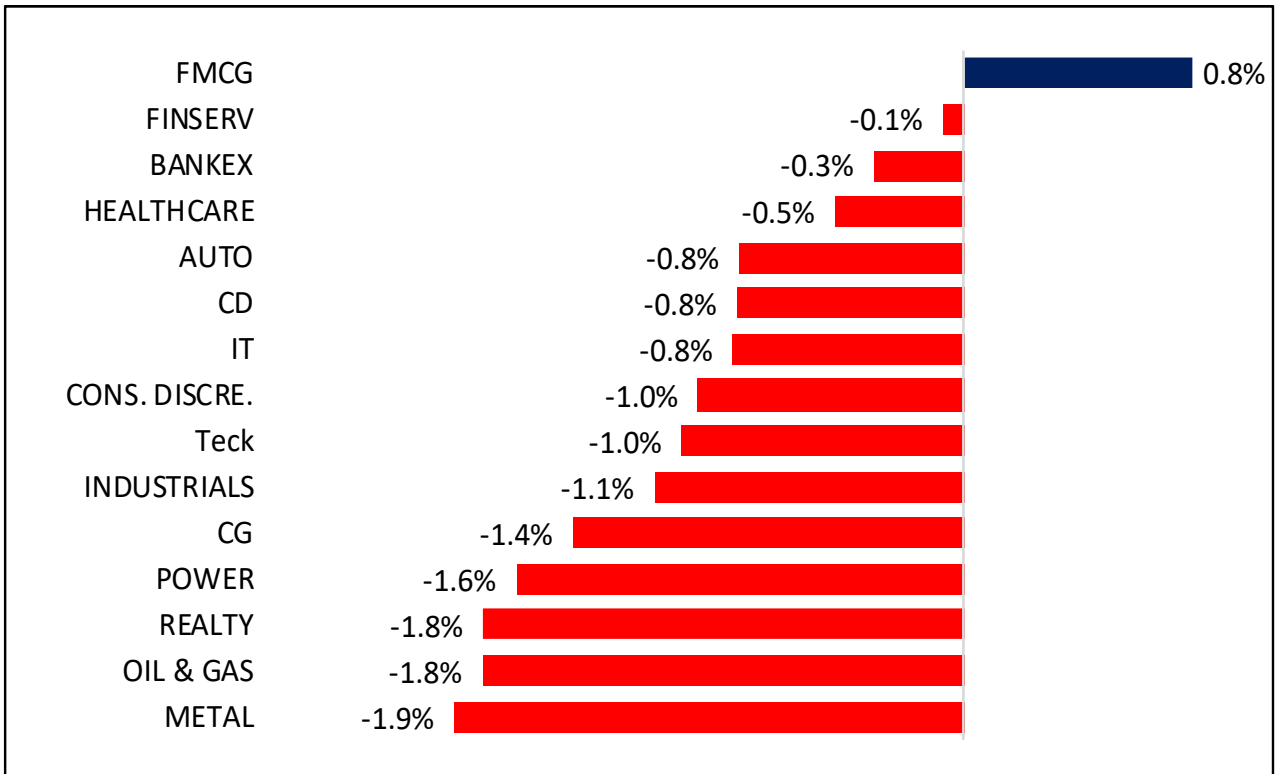
	Close	Abs. Change	% Change
IFSC Nifty			
IFSC Nifty	23,061	-81.5 ▼	-0.35%
US Indices			
Dow Jones	50,006	16.0 ▲	0.03%
S&P 500	7,282	3.5 ▲	0.05%
Nasdaq	28,589	35.3 ▲	0.12%
European Indices			
FTSE	10,173	-16.7 ▼	-0.16%
DAX	24,031	-212.0 ▼	-0.87%
Asian Indices			
Shanghai	4,683	-31.6 ▼	-0.70%
Hang Seng	23,981	-329.5 ▼	-1.36%
Nikkei	63,645	320.0 ▲	0.51%

Nifty50 Index Contributors

Top Five (Positive Contributors)		
Stock	Points	% Change
HDFCBANK	31.5	0.14
ICICIBANK	28.2	0.12
AXISBANK	13.5	0.06
KOTAKBANK	10.2	0.04
LT	7.8	0.03

Bottom Five (Negative Contributors)		
Stock	Points	% Change
RELIANCE	-15.56	-0.07
BHARTIARTL	-14.74	-0.06
HINDALCO	-11.56	-0.05
ETERNAL	-9.07	-0.04
INFY	-8.63	-0.04

BSE Sectoral Leaders & Laggards

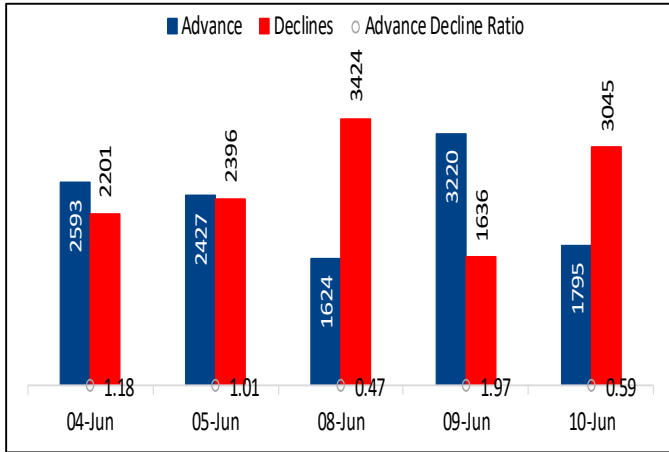


Nifty50 Index Top Pops & Drops

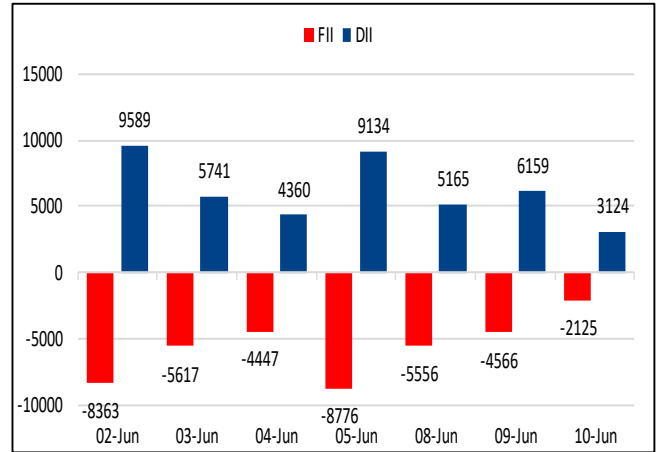
Nifty50 Top Five Gainers			
Symbol	LTP	% Change	Volume
NESTLEIND	1438.3	1.98	2,288,648
HINDUNILVR	2169.5	1.72	2,325,534
AXISBANK	1314.5	1.71	12,262,606
KOTAKBANK	388.1	1.68	21,427,363
ICICIBANK	1293.3	1.44	25,951,584

Nifty50 Top Five Losers			
Symbol	LTP	% Change	Volume
HINDALCO	1039.3	-3.47	8,048,339
COALINDIA	451.0	-3.41	8,127,902
ONGC	251.9	-2.74	10,176,332
ETERNAL	239.8	-2.38	23,687,653
SBILIFE	1728.7	-2.28	1,149,490

BSE Advance & Declines



Institutional Activities (Rs Cr)



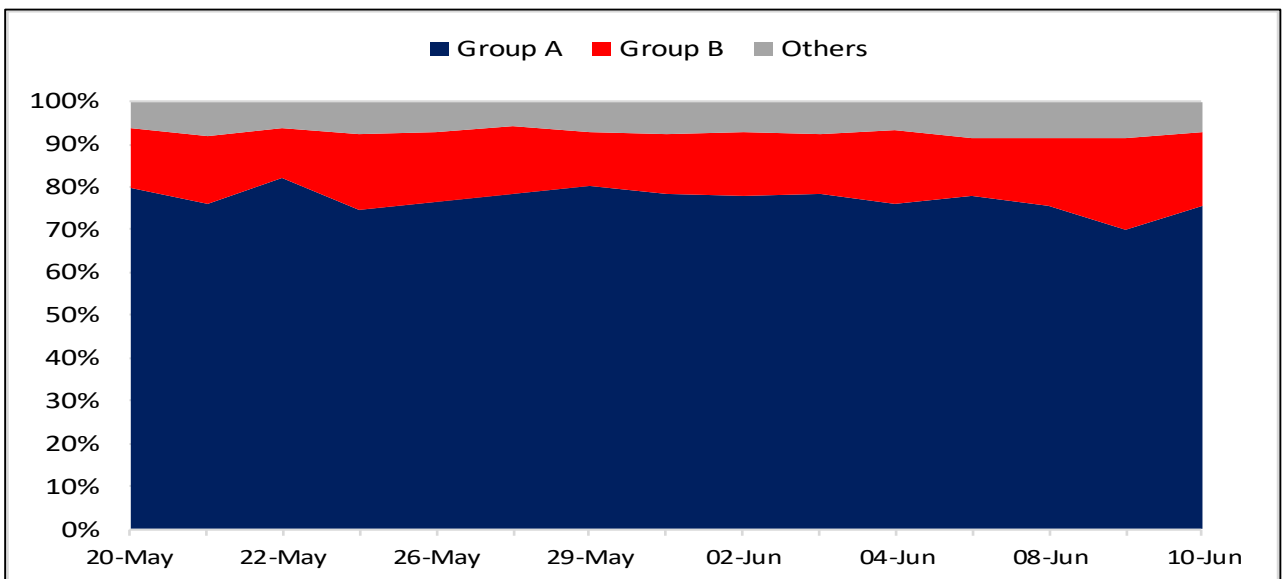
52 Week High Stocks

	10-Jun-26	09-Jun-26
BSE Universe	146	137
BSE Group A Stocks Hitting 52 Week High		
Stocks	Price	52 Week High
APOLLOHOSP	8487.4	8624.2
ASTERDM	812.2	825.0
CEMPRO	1238.2	1257.0
CHENNPETRO	1183.9	1249.0
DATAPATTNS	4354.5	4722.7




52 Week Low Stocks

	10-Jun-26	09-Jun-26
BSE Universe	99	94
BSE Group A Stocks Hitting 52 Week Low		
Stocks	Price	52 Week Low
RAMCOCEM	851.7	838.4
RELIANCE	1,259.6	1,255.5
WIPRO	179.0	178.5
ZENSARTECH	457.4	456.1
DALBHARAT	1,635.3	1,633.0

BSE Cash Market Turnover Participant-wise



News Highly Sensitive to Stock Price

Impact	Stock	News
	Clean Max Enviro Energy Solutions	Meta Platforms and CleanMax have announced a ~900 MW renewable energy partnership in India. Together, the companies will support the development of 837 MW of new solar and wind capacity across Rajasthan and Karnataka
	Concord Biotech	Company has received approval from the US FDA for its ANDA for Tofacitinib Tablets, 5 mg and 10 mg. Tofacitinib tablets are indicated for the treatment of adult patients with Moderately to severely active rheumatoid arthritis (RA), Active psoriatic arthritis (PsA), Active ankylosing spondylitis (AS), Moderately to severely active ulcerative colitis (UC), Active PsA, Active polyarticular course juvenile idiopathic arthritis (pcJIA). According to market estimates, the US market for Tofacitinib Tablets both strengths put together is approximately US\$ 500 million.
	Mahindra & Mahindra	Mahindra & Mahindra is facing up to 15% drop in SUV production in June as some of its key parts suppliers grapple with an acute shortage of contract workers. This issue is impacting factory operations for popular models. The automotive industry across India faces similar labor challenges. Companies are adapting through automation and worker retention strategies.

Stock	News
<p>Reliance Inds</p>	<p>Reliance Industries Limited and social media major Meta Platforms have partnered to develop a 168-megawatt data centre in Jamnagar, Gujarat, within two years. This is the first built-to-suit data centre capacity in India for Meta and represents a significant milestone in India's emergence as a global hub for AI infrastructure.</p> <p>A consortium led by Reliance Industries' subsidiary Reliance 4IR Realty Development, along with Mahadev Realtors Juhu, a subsidiary of Aspect Realty, has emerged as the successful bidder for the redevelopment of the 101.36-acre Juhu Galli slum cluster in Mumbai suburb Andheri (West), one of the largest slum cluster redevelopment projects undertaken in Mumbai.</p>
<p>Gujarat Gas</p>	<p>CNG vehicle registrations and industrial gas utilization are poised for remarkable growth. With CNG vehicles presenting significant cost benefits over electric and petrol options, the future looks bright. Gujarat Gas is gearing up for heightened LNG blending to satisfy the soaring demand in Morbi, where industries favor PNG(I) for dependable supply.</p>
<p>Ceigall</p>	<p>Ceigall India announced that Ceigall Ambala Chandigarh Zirakpur, Project Special Purpose Vehicle (SPV) has executed the Concession Agreement with the National Highways Authority of India on 09 June 2026. The Rs 603-crore project entails construction of 6-lane access controlled Spur connectivity starting from Ch. 15.100 of Ambala - Chandigarh section of NH 205A and terminating at Ch. 2.500 of Zirakpur Bypass (Total length 10.300 Km) under NH(0) in the state of Punjab</p>
<p>KRN Heat exchanger</p>	<p>The company's board approved an investment of Rs 235.26 crore in its wholly owned subsidiary, KRN HVAC Products (KHPL). KHPL is currently engaged in the business of manufacturing of Heat Exchanger and other HVAC Products. Its turnover was Rs 218.85 crore in FY26.</p>
<p>Hyundai Motor</p>	<p>Hyundai Motor India's Chennai plant is recovering after a fire at a supplier's facility. Production at Chennai Plant 1 was affected, but other facilities continued operations. The company sourced parts from alternative locations. Chennai Plant 1 is expected to return to normal production by June 15. Full manufacturing operations should be restored by June 22.</p>

Stock	News
<p>KIMS</p>	<p>Krishna Institute of Medical Sciences Limited (KIMS) said that board meeting will be held on 13 June 2026 to consider and evaluate the proposal for raising of funds by way of issuance of one or more instrument(s) / securities which may include equity shares, fully convertible warrants and/or any other eligible securities (convertible / non-convertible) and / or any combinations of securities thereof through permissible modes, including but not limited to a preferential issue on a private placement basis or through any other permissible mode.</p>
<p>Deccan Gold</p>	<p>Deccan Gold Mines Limited announced the signing of a definitive Earn-In, Option and Shareholders Agreement for the Logrosan Tungsten Project in Spain, providing a pathway for the Company to progressively earn an initial 51% stake for Euro 1.76 million. Under the agreement, Deccan Gold will invest to progressively acquire a 51% stake in Logrosan Minera S.L. by March 2027. The Company will subsequently have the option to increase its ownership to 75%, subject to agreed milestones and independent valuation, with the potential to further increase its stake to as much as 95% over time through future funding participation and dilution provisions.</p>
<p>Power Grid Corp</p>	<p>The board of directors in their meeting approved (i) Approval for upgradation of SCADA and Associated Systems of NTAMC/RTAMC at an estimated cost of Rs 485.04 Cr; (ii) Availing Unsecured Term Loan Facility in Japanese Yen (JPY) 80 billion (~Rs 4,750 Cr) from JBIC and Participating Financial Institutions.</p>
<p>PFC / REC</p>	<p>The President of India has officially approved the merger of REC Limited into Power Finance Corporation (PFC). Conveyed through a Ministry of Power letter, this historic move creates a sovereign-backed power lending giant with a combined loan book exceeding ₹10.8 lakh crore.</p>

Key Events

U.S. consumer prices rise by 4.2% annually in May

U.S. consumer price growth accelerated on an annualized basis in May, driven by an uptick in gasoline prices. Headline consumer prices rose by 4.2% in the twelve months to May, accelerating from 3.8% in the preceding month and in line with expectations. It was the hottest such reading since April 2023.

Japan wholesale inflation accelerates to fastest in 3 years as energy costs spike

Japan's wholesale inflation accelerated in May at the fastest pace in three years as price pressures from the Middle East war broadened, adding to the case for further interest rate hikes by the central bank. Japan's producer price index in May rose 6.3% from a year earlier, exceeding market forecasts for a 5.5% increase and faster than a revised 5.3% gain in April.

Japan business mood sours in April-June as Middle East war hits

Japanese business sentiment soured in April-June for the first time in four quarters, a sign of growing economic pain from the Middle East conflict. An index measuring big companies' sentiment fell to -0.5% point in the second quarter following a reading of +4.4 points in January-March, the survey showed.

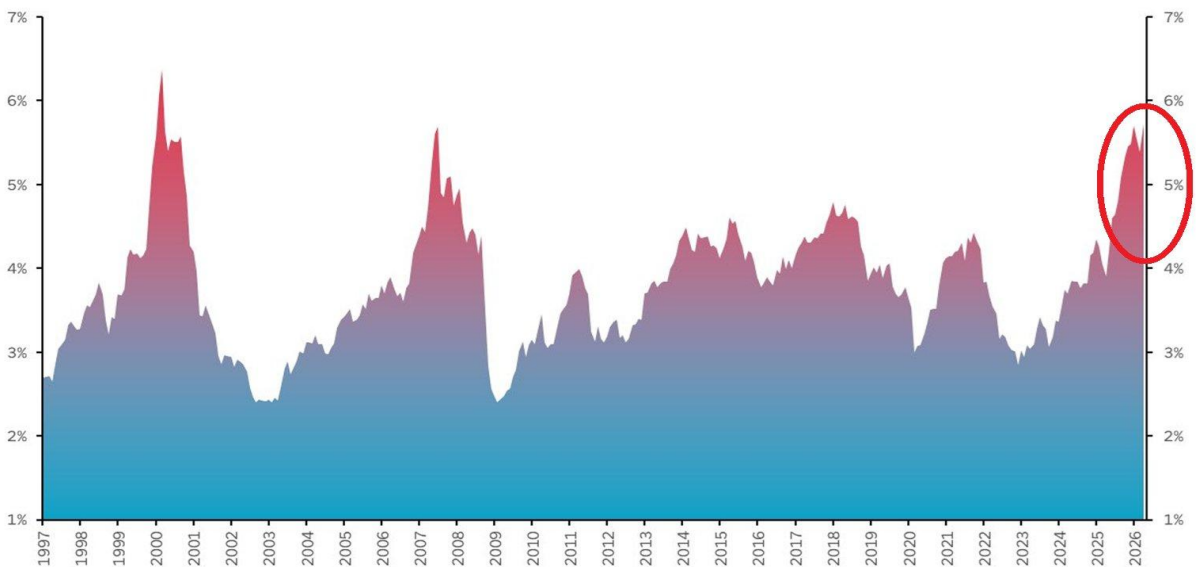
Chart with Interesting Observations

Borrowed Bull Market: US Investors' Margin Debt Climbs to Record \$1.3 Trillion

- Investor borrowing in the United States has reached unprecedented levels. Margin debt jumped by \$83 billion in April, climbing to an all-time high of \$1.3 trillion. Over the past 12 months alone, leveraged positions have expanded by \$453 billion, representing a remarkable 53% increase. The surge highlights growing risk appetite among market participants as they continue to amplify exposure through borrowed capital.
- Relative to the broader money supply, margin debt now equals 5.5% of U.S. M2, the highest proportion recorded since the Dot-Com era of 2000. Meanwhile, margin balances held at leading brokerage firms have also reached historic extremes, rising to roughly 1.3% of total U.S. stock market capitalisation. These figures suggest that leverage has become a dominant force in today's equity markets, exceeding levels seen during many previous market cycles.

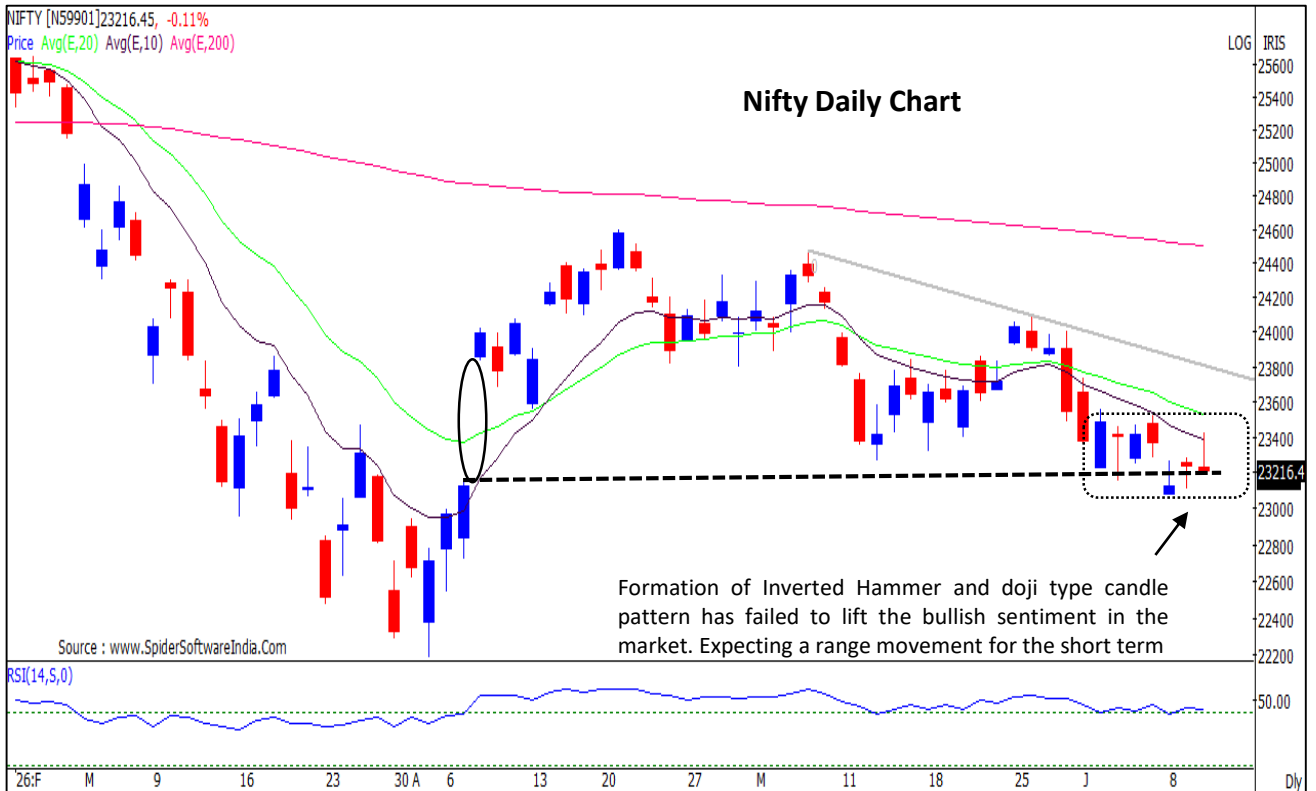
US Margin Debt as a % of M2 Money Supply

Margin Debt as a % of M2

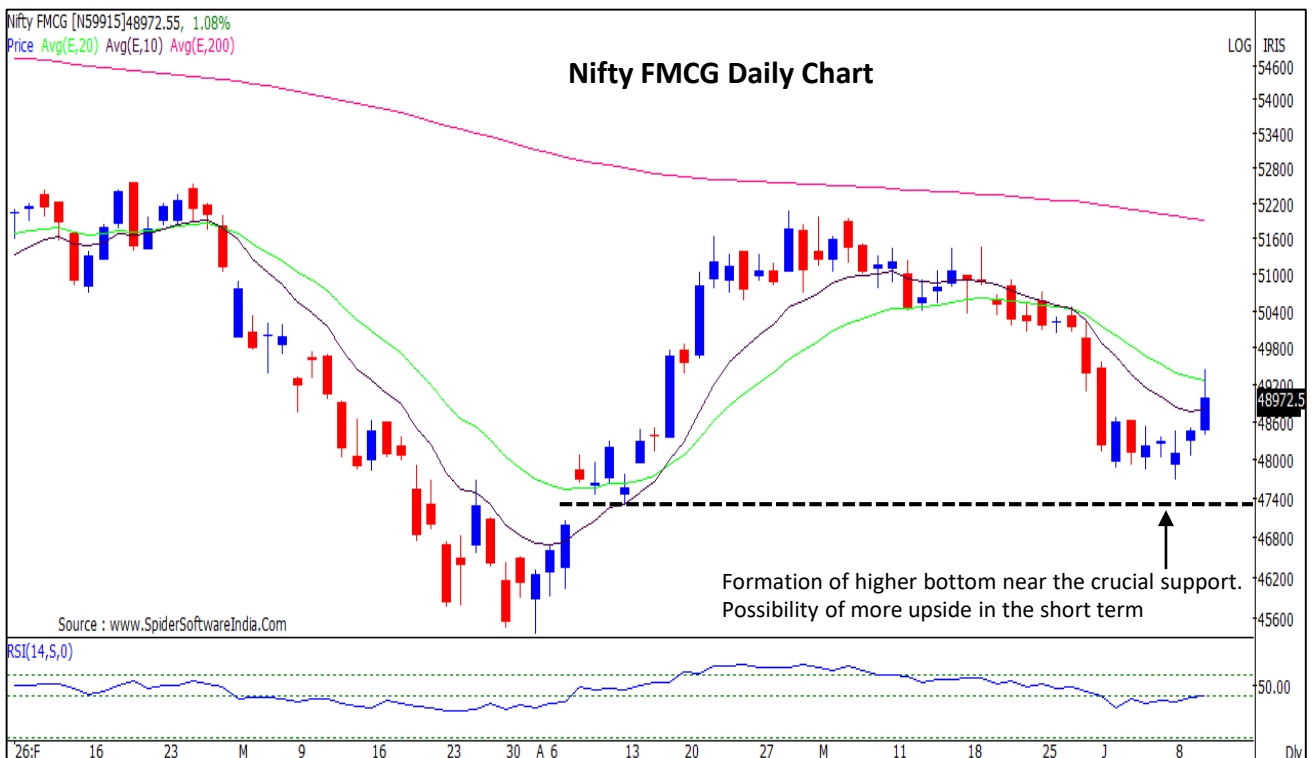


Source: SoFi, FINRA, Bloomberg

Nifty : The market is displaying inherent weakness to sustain the gains. Negative market breadth is also dampening bullish sentiment



Nifty FMCG : The downward correction seems to have completed. Selective FMCG stocks could be considered as a defensive bet



F&O Highlights

SHORT COVERING WAS SEEN BY FII'S' IN THE INDEX FUTURES SEGMENT

Create longs with the SL of 22950 levels.

- Nifty ended 27 points lower at 23,214 after a volatile session. The index rallied over 200 points from the day's low in the first half but reversed sharply later, erasing all gains amid renewed selling pressure.
- Long Unwinding was seen in the Nifty Futures where Open Interest fell by 1.26% with Nifty falling by 0.12%.
- Short Build-Up was seen in the Bank Nifty Futures where Open Interest rose by 0.86% with Bank Nifty falling by 0.17%.
- Nifty Open Interest Put Call ratio fell to 0.93 levels from 1.06 levels.
- Amongst the Nifty options (16-Jun Expiry), Call writing is seen at 23300-23400 levels, indicating Nifty is likely to find strong resistance in the vicinity of 23300-23400 levels. On the lower side, an immediate support is placed in the vicinity of 23200-23000 levels where we have seen Put writing.
- Short covering was seen by FII's' in the Index Futures segment where they net bought worth 796 cr with their Open Interest going down by 1966 contracts.

Index	Expected Trend	Prev. Close	Recommendations	Stop Loss	Target
NIFTY FUT	UP	23240.10	BUY AROUND 23050	22950	23250
BANK NIFTY FUT	UP	55200.40	BUY AROUND 54800	54300	55500

Nifty 50 Snapshot			
	10-Jun-26	09-Jun-26	% Chg.
Nifty Spot	23214.95	23242.10	-0.12
Nifty Futures	23240.10	23331.10	-0.39
Premium/ (Discount)	25.15	89.00	N.A.
Open Interest (OI)	2.14	2.16	-1.26
Nifty PCR	0.93	1.06	-11.92

Bank Nifty Snapshot			
	10-Jun-26	09-Jun-26	% Chg.
Bank Nifty Spot	55100.30	55194.50	-0.17
Bank Nifty Futures	55200.40	55375.60	-0.32
Premium/ (Discount)	100.10	181.10	N.A.
Open Interest (OI)	0.26	0.26	0.86
Bank Nifty PCR	0.93	0.94	-1.16

Nifty Options Highest OI (Weekly)			
CALL		PUT	
Strike Price	Open Interest (Contracts)	Strike Price	Open Interest (Contracts)
24000	113189	22000	109235

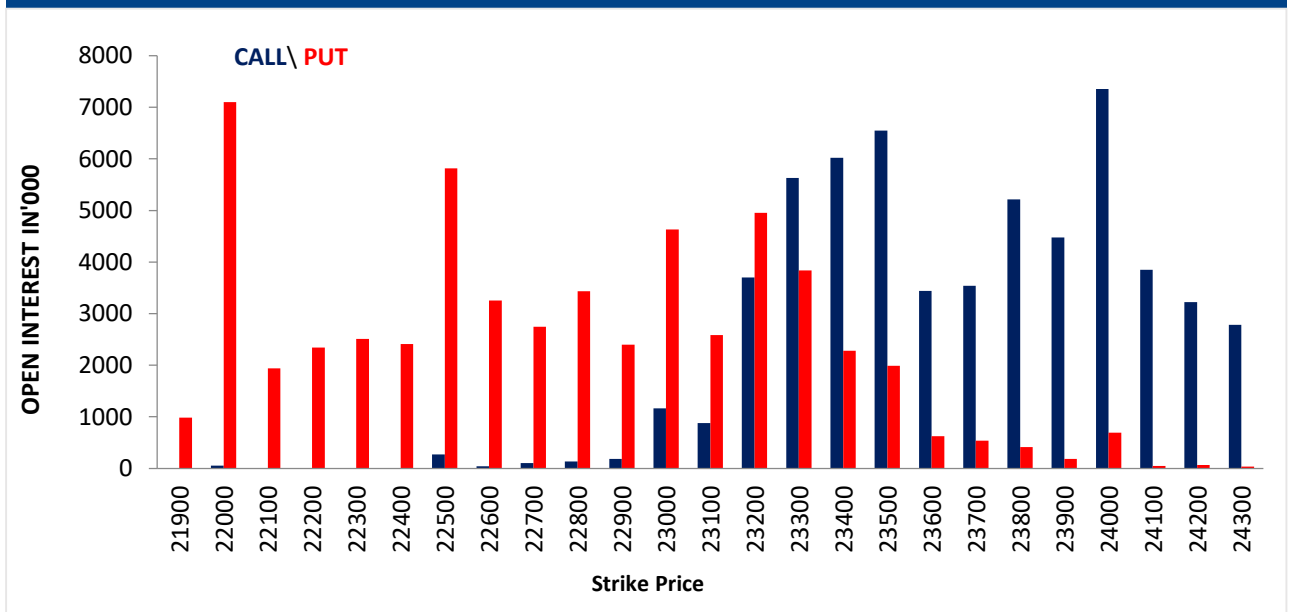
FII Activity on 10 June 2026

	BUY		SELL		NET (Rs Cr)	OPEN INTEREST	
	Contracts	Value (Rs Cr)	Contracts	Value (Rs Cr)		Contracts	Value (Rs Cr)
Index Futures	14466	2300	9444	1504	796	337375	52145
Nifty Futures	7319	1111	4617	701	411	261407	39509
Bank Nifty Fut.	6858	1140	4314	717	423	55066	9121
Index Options	3718066	570615	3725093	571270	-655	2649882	408515
Nifty Options	3445729	524660	3457530	526360	-1700	2046945	308878
Bank Nifty Opt.	237386	40079	233032	39084	995	555703	91858
Stock Futures	264654	16945	273705	18048	-1102	7388696	448948
Stock Options	413898	26350	408824	25993	357	955610	59076

FII's Open Interest (Contracts)

Date	Index Futures	Nifty Futures	Bank Nifty Futures	Index Options	Nifty Options	Bank Nifty Options	Stock Futures	Stock Options
10-Jun-26	337375	261407	55066	2649882	2046945	555703	7388696	955610
09-Jun-26	339341	262313	56306	2373711	1796406	527763	7354913	892384
NET (CONTRACTS)	-1966	-906	-1240	276171	250539	27940	33783	63226

Nifty Weekly (16 – June) Option Open Interest Distribution



Top Gainers OI Wise		
Company	Future OI (%)	Price (%)
OIL	13.26	-10.21
SIEMENS	11.02	-1.02
IRFC	9.53	-1.26
GVT&D	8.28	-1.32
KFINTECH	7.09	-2.93

Top Losers OI Wise		
Company	Future OI (%)	Price (%)
POLICYBZR	-6.37	0.82
FEDERALBNK	-5.54	-1.27
SBIN	-5.53	0.05
BPCL	-3.87	-0.38
ICICIBANK	-3.55	1.44

Top Gainers Price Wise		
Company	Future OI (%)	Price (%)
NESTLEIND	0.20	1.98
SHREECEM	-3.10	1.86
HINDUNILVR	-0.65	1.72
AXISBANK	-2.42	1.71
KOTAKBANK	-3.07	1.68

Top Losers Price Wise		
Company	Future OI (%)	Price (%)
OIL	13.26	-10.21
MANAPPURAM	1.97	-6.18
BHEL	-1.67	-4.85
INDIANB	3.20	-4.74
KALYANKJIL	1.29	-4.60

Long Buildup		
Company	Future OI (%)	Price (%)
BHARATFORG	6.66	1.24
PIDILITIND	5.94	1.67
HDFCBANK	0.81	1.15
SUNPHARMA	0.74	0.42
CIPLA	0.71	0.04

Short Buildup		
Company	Future OI (%)	Price (%)
OIL	13.26	-10.21
SIEMENS	11.02	-1.02
IRFC	9.53	-1.26
GVT&D	8.28	-1.32
KFINTECH	7.09	-2.93

Long Unwinding		
Company	Future OI (%)	Price (%)
FEDERALBNK	-5.54	-1.27
BPCL	-3.87	-0.38
HINDZINC	-3.36	-2.86
COALINDIA	-3.33	-3.41
BSE	-3.02	-1.67

Short Covering		
Company	Future OI (%)	Price (%)
POLICYBZR	-6.37	0.82
SBIN	-5.53	0.05
ICICIBANK	-3.55	1.44
MARICO	-3.14	0.82
COLPAL	-3.11	1.63

Securities In Ban For Trade – 11.06.2026

No.	Company Name
1.	KAYNES

Economic Calendar

Thursday	Friday	Monday	Tuesday	Wednesday
11 Jun	12 Jun	15 Jun	16 Jun	17 Jun
EU: ECB Monetary Policy US: Initial & Conti. Claims	Japan: IIP UK: GDP, Mfg. Prod., Trade Balance India: CPI US: Uni. of Mich. Sentiment	India: WPI EU: Trade Balance, IIP US: Empire Mfg., IIP, Mfg. Prod., Capacity Utilisation, NAHB Housing Mkt. Index India: Trade Balance	Japan: BoJ Monetary Policy China: New Home Price, Retail Sales, IIP US: ADP Emp., Housing Starts, Building permits	Japan: Trade Balance UK, EU: CPI US: MBA Mortgage, Retail sales, Business Inventory, Pending Home Sales US: FOMC Policy Decision

Open Derivatives Trading Calls

NO	RECO DT	RECO	COMPANY NAME	BUY RANGE	CMP	SL	TARGET	UPSIDE %	VALID TILL
1	10-JUN-26	BUY	MIDCAP NIFTY 30TH JUNE 14100 PUT OPTION	264.8	298.2	190	380	27.5	30-JUN-26
2	10-JUN-26	SELL	MIDCAP NIFTY 30TH JUNE 14000 CALL OPTION	279.8	281.0	365	170	39.5	30-JUN-26
3	8-JUN-26	BUY	GMR AIRPORT JUNE FUT	103.15-99.50	101.4	97.8	115	13.4	30-JUN-26
4	9-JUN-26	BUY	PNB JULY FUT	107.5-110	108.2	105	120	10.9	28-JUL-26
5	9-JUN-26	BUY	UNION BANK JUNE FUT	170.12-166	166.7	163	178	6.8	30-JUN-26
6	10-JUN-26	BUY	PFC JUNE FUT	438.75-430	431.2	427	461	6.9	30-JUN-26

Open Short-Term MTF Calls

NO.	RECO DT.	RECO	COMPANY NAME	BUY RANGE	CMP	Lower Band	SL	TARGET	UPSIDE %	VALID TILL
1	2-JUN-26	BUY	JSW CEMENT	127.7-128.50	126.82	123.5	121.5	135.5	6.8	16-JUN-26
2	4-JUN-26	BUY	ENGINEERS INDIA	279-239	232.05	231	226	255	9.9	18-JUN-26
3	8-JUN-26	BUY	TCI	970-964.65	945.05	950	935	1050	11.1	22-JUN-26
4	9-JUN-26	BUY	STEEL STRIPS	231-229.50	227.09	222	218	246	8.3	23-JUN-26
5	9-JUN-26	BUY	BANK OF INDIA	146.50-145.91	144.86	142.5	139	155	7.0	30-JUN-26
6	9-JUN-26	BUY	IDFC FIRST BANK	73.80-74.20	72.99	72	70.8	78	6.9	30-JUN-26
7	10-JUN-26	BUY	PIDILITE	1513-1520	1506.5	1470	1450	1590	5.5	1-JUL-26
8	10-JUN-26	BUY	UCO BANK	26.05-26.30	25.75	25.33	24.88	27.6	7.2	24-JUN-26

Open Positional MTF Calls

NO.	RECO DT.	RECO	COMPANY NAME	BUY RANGE	CMP	SL	TARGET 1	TARGET 2	UPSIDE %	VALID TILL
1	14-MAY-26	BUY	MODEFENCE	100.95-102.50	98.9	95.5	107.0	110	11.3	13-JUL-26
2	19-MAY-26	BUY	SANDUR MANGANESE	225.90-230	210.1	206.0	248.0	271	29.0	18-JUL-26
3	19-MAY-26	BUY	PDSL*	293-299	302.3	293.0	320.0	339	12.2	18-JUL-26
4	21-MAY-26	BUY	OBEROI REALTY	1663-1680	1591.6	1558.0	1795.0	1870	17.5	5-JUL-26
5	21-MAY-26	BUY	HDFCNIFBAN	55.60-55.23	56.5	52.5	59.0	62	9.8	19-AUG-26
6	26-MAY-26	BUY	CHAMBAL FERTILIZERS	475-484	477.7	438.0	518.0	550	15.1	25-JUL-26
7	4-JUN-26	BUY	AETHER	1150-1140.50	1124.6	1060.0	1235.0	1300	15.6	3-AUG-26
8	5-JUN-26	BUY	ELECON	533-528.75	523.0	490.0	575.0	610	16.6	4-AUG-26

*= 1st Target Achieved

Open Derivative Strategy

NO.	RECO DT.	RECO	INDEX	RECO PRICE	MAX Profit	MAX LOSS	VALID TILL
1	2-Jun-26	Buy	BANK NIFTY (30-JUN) 53500 PUT	935	9300	5700	30-Jun-26
		Sell	BANK NIFTY (30-JUN) 53000 PUT	745			

NSE 200 SUPPORT & RESISTANCE

SYMBOL	CLOSE	PIVOT	SUPT 2	SUPT 1	RESI 1	RESI 2	52 W H	52 W L	30 D % CHG
360ONE	1052.0	1060.0	1028.0	1040.0	1072.0	1092.0	1273.8	906.1	-5.71
ABB	6801.0	6840.5	6658.0	6729.5	6912.0	7023.0	7822.5	4637.5	-3.03
ABCAPITAL	342.7	345.7	333.4	338.1	350.3	357.9	376.0	235.0	-5.21
ADANIENSOL	1535.6	1545.9	1486.6	1511.1	1570.4	1605.2	1614.8	744.9	13.48
ADANIENT	2931.1	2948.0	2871.1	2901.1	2978.0	3024.9	3059.8	1753.0	17.32
ADANIGREEN	1483.0	1499.2	1439.3	1461.2	1521.1	1559.1	1544.8	765.0	9.60
ADANIPOWER	1821.2	1830.4	1784.8	1803.0	1848.6	1876.0	1857.8	1290.5	3.39
ALKEM	5299.5	5351.8	5167.8	5233.7	5417.7	5535.8	5933.5	4716.2	-5.35
AMBUJACEM	409.8	411.9	402.5	406.2	415.6	421.3	625.0	394.0	-7.90
APLAPOLLO	1762.4	1774.0	1729.0	1745.7	1790.7	1819.0	2301.4	1492.0	-9.48
APOLLOHOSP	8488.5	8527.7	8374.2	8431.3	8584.8	8681.2	8624.0	6696.5	4.73
ASHOKLEY	141.5	142.6	138.3	139.9	144.2	146.9	215.4	115.0	-16.06
ASIANPAINT	2715.1	2719.7	2675.7	2695.4	2739.4	2763.7	2985.7	2115.0	3.85
ASTRAL	1501.5	1517.0	1458.4	1479.9	1538.5	1575.6	1768.7	1263.7	-4.26
ATGL	728.4	738.5	699.6	714.0	752.9	777.4	859.9	462.8	15.31
AUBANK	959.2	965.9	940.7	949.9	975.2	991.2	1079.6	682.2	-8.75
AUROPHARMA	1453.6	1453.0	1421.7	1437.7	1469.0	1484.3	1550.0	1016.1	-1.84
AXISBANK	1314.5	1308.2	1265.2	1289.8	1332.8	1351.2	1418.3	1042.5	3.60
BAJAJ-AUTO	10144.0	10187.0	10018.0	10081.0	10250.0	10356.0	10834.0	7858.5	-5.43
BAJAJFINSV	1664.2	1674.8	1635.3	1649.8	1689.3	1714.3	2195.0	1597.0	-8.54
BAJAJHLDNG	10035.0	10097.3	9788.3	9911.7	10220.7	10406.3	14763.0	8588.0	-5.47
BAJFINANCE	884.1	886.3	871.7	877.9	892.5	900.9	1102.5	787.9	-7.36
BANKBARODA	269.3	270.9	264.4	266.9	273.4	277.4	325.5	230.5	1.93
BANKINDIA	144.9	146.1	141.0	142.9	148.0	151.1	178.4	108.8	3.53
BDL	1183.8	1191.1	1156.8	1170.3	1204.6	1225.4	2013.5	1086.0	-18.16
BEL	408.4	410.2	402.1	405.2	413.4	418.4	473.5	361.2	-7.18
BHARATFORG	1949.2	1933.9	1835.5	1892.3	1990.7	2032.3	2044.0	1100.5	-1.61
BHARTIARTL	1775.2	1784.6	1747.9	1761.6	1798.3	1821.3	2174.5	1740.5	-3.14
BHEL	377.3	383.4	362.0	369.6	391.1	404.9	424.9	205.1	-6.75
BIOCON	414.6	416.3	407.6	411.1	419.8	425.1	440.4	330.9	9.08
BLUESTARCO	1581.7	1586.9	1541.0	1561.3	1607.2	1632.8	2040.0	1450.0	-6.82
BOSCHLTD	37790.0	37846.7	37096.7	37443.3	38193.3	38596.7	41945.0	28610.0	-0.90
BPCL	288.0	288.2	284.3	286.1	290.0	292.1	391.7	266.6	-4.67
BRITANNIA	5171.0	5168.8	5040.3	5105.7	5234.2	5297.3	6336.0	5035.0	-6.52
BSE	3929.5	3957.2	3841.3	3885.4	4001.3	4073.1	4446.8	2021.5	0.71
CANBK	133.5	134.9	129.8	131.6	136.8	140.1	162.9	103.6	-0.77
CGPOWER	908.1	910.6	885.2	896.7	922.0	935.9	952.0	525.5	3.94
CHOLAFIN	1472.6	1485.4	1434.2	1453.4	1504.6	1536.6	1831.5	1299.4	-11.97
CIPLA	1377.0	1379.8	1359.5	1368.3	1388.6	1400.1	1673.0	1165.7	2.12
COALINDIA	451.0	456.2	439.0	445.0	462.2	473.4	491.3	368.7	-1.12
COCHINSHIP	1404.2	1417.8	1368.7	1386.4	1435.5	1466.9	2418.6	1187.0	-20.92
COFORGE	1402.7	1411.9	1375.6	1389.1	1425.4	1448.2	1994.0	1008.1	2.39
COLPAL	2056.3	2060.2	1984.5	2020.4	2096.1	2135.9	2504.0	1782.0	-6.33
CONCOR	445.5	447.5	436.1	440.8	452.2	458.9	650.7	421.5	-17.01
COROMANDEL	1880.7	1860.1	1780.0	1830.4	1910.5	1940.2	2718.9	1706.5	-2.37
CUMMINSIND	5609.5	5622.8	5483.8	5546.7	5685.7	5761.8	6100.0	3212.2	4.05
DABUR	427.9	431.1	419.1	423.5	435.5	443.2	577.0	403.4	-12.47
DIVISLAB	6638.5	6687.8	6482.8	6560.7	6765.7	6892.8	7071.5	5636.5	-0.68
DIXON	11487.0	11623.0	11117.0	11302.0	11808.0	12129.0	18471.0	9600.0	6.17

NSE 200 SUPPORT & RESISTANCE

SYMBOL	CLOSE	PIVOT	SUPT 2	SUPT 1	RESI 1	RESI 2	52 W H	52 W L	30 D % CHG
DLF	563.2	567.2	550.1	556.7	573.7	584.2	886.8	489.4	-7.18
DMART	4043.4	4094.4	3916.6	3980.0	4157.8	4272.2	4949.5	3529.0	-8.00
DRREDDY	1271.7	1274.0	1257.0	1264.4	1281.4	1291.0	1379.7	1148.4	-1.69
EICHERMOT	7219.5	7214.3	7101.8	7160.7	7273.2	7326.8	8230.0	5219.5	-1.34
ENRIN	3424.8	3472.0	3311.1	3368.0	3528.9	3632.9	3968.0	2115.0	8.05
ETERNAL	239.8	241.9	233.9	236.9	244.9	249.9	368.5	212.6	-6.45
EXIDEIND	386.4	388.4	379.8	383.1	391.7	397.1	431.0	287.0	6.92
FEDERALBNK	311.1	312.6	305.7	308.4	315.3	319.4	316.7	185.1	4.76
FORTIS	989.0	994.1	967.1	978.0	1005.0	1021.1	1104.3	742.2	3.23
GAIL	168.0	168.0	164.5	166.2	169.8	171.6	202.8	134.4	1.03
GLENMARK	2144.4	2178.0	2062.6	2103.5	2218.9	2293.4	2474.0	1589.0	-9.31
GMRAIRPORT	100.9	101.6	98.9	99.9	102.6	104.3	110.4	79.9	-0.31
GODFRYPHLP	2234.6	2247.1	2189.2	2211.9	2269.8	2305.0	3947.0	1832.1	-7.91
GODREJCP	1027.6	1025.7	996.3	1012.0	1041.4	1055.1	1309.0	967.1	-1.29
GODREJPROP	1641.5	1654.1	1599.2	1620.3	1675.2	1709.0	2506.5	1434.0	-12.31
GRASIM	3071.2	3089.6	3023.1	3047.1	3113.6	3156.1	3197.5	2502.5	3.66
GROWWW	191.6	193.0	187.0	189.3	195.3	198.9	227.2	112.0	-6.59
GVT&D	4866.0	4896.7	4692.7	4779.3	4983.3	5100.7	5222.1	2204.0	5.29
HAL	4219.2	4245.9	4122.5	4170.9	4294.3	4369.3	5147.0	3479.1	-11.86
HAVELLS	1155.5	1156.4	1138.3	1146.9	1165.0	1174.5	1621.1	1123.6	-7.97
HCLTECH	1132.1	1138.0	1116.0	1124.1	1146.1	1160.0	1780.1	1103.4	-5.63
HDFCAMC	2447.8	2464.8	2390.7	2419.3	2493.4	2538.9	2967.3	2205.6	-14.28
HDFCBANK	746.9	746.4	726.9	736.9	756.4	766.0	1020.5	726.7	-4.23
HDFCLIFE	549.6	554.7	535.1	542.3	561.9	574.3	820.8	547.5	-11.52
HEROMOTOCO	4856.7	4894.7	4752.0	4804.3	4947.0	5037.4	6388.5	4190.0	-8.68
HINDALCO	1039.3	1046.8	1014.1	1026.7	1059.4	1079.5	1176.0	635.0	-0.42
HINDPETRO	374.4	377.7	366.5	370.5	381.6	388.8	508.5	316.2	-3.18
HINDUNILVR	2169.5	2169.3	2097.9	2133.7	2205.1	2240.7	2750.0	2022.5	-5.04
HINDZINC	547.6	547.9	534.3	540.9	554.5	561.5	733.0	413.5	-13.67
HUDCO	205.6	205.8	199.7	202.6	208.7	211.8	251.5	159.0	-12.49
HYUNDAI	1891.0	1898.3	1864.3	1877.7	1911.7	1932.3	2890.0	1658.0	2.39
ICICIAMC	3203.8	3245.7	3102.3	3153.1	3296.5	3389.1	3611.0	2530.0	-0.99
ICICIBANK	1293.3	1290.2	1255.5	1274.4	1309.1	1324.9	1500.0	1187.6	2.23
ICICIGI	1732.2	1750.1	1688.1	1710.1	1772.1	1812.1	2068.7	1629.5	-5.09
IDEA	13.9	13.9	13.5	13.7	14.1	14.4	15.3	6.1	23.40
IDFCFIRSTB	73.0	73.3	71.9	72.4	73.9	74.7	87.0	58.1	2.64
INDHOTEL	665.9	669.1	651.0	658.4	676.5	687.2	812.0	565.0	-0.79
INDIANB	833.5	842.3	809.9	821.7	854.1	874.7	1000.9	606.0	-3.18
INDIGO	4524.9	4536.3	4461.3	4493.1	4568.1	4611.3	6232.5	3895.2	0.05
INDUSINDBK	884.0	896.5	854.6	869.3	911.2	938.4	968.9	710.6	-6.92
INDUSTOWER	413.2	413.1	404.0	408.6	417.7	422.3	481.5	312.6	1.78
INFY	1145.3	1153.3	1125.2	1135.3	1163.4	1181.4	1728.0	1089.0	-2.99
IOC	136.9	137.7	134.5	135.7	138.9	140.9	189.0	130.2	-5.39
IRCTC	512.4	514.2	505.9	509.1	517.4	522.5	798.6	492.7	-9.17
IREDA	120.6	121.4	118.2	119.4	122.6	124.7	186.6	108.7	-10.48
IRFC	94.8	95.8	92.3	93.5	97.0	99.3	149.0	87.0	-10.73
ITC	283.7	282.7	275.5	279.6	286.8	289.9	428.6	275.1	-7.85
JINDALSTEL	1121.1	1129.0	1099.7	1110.4	1139.7	1158.3	1306.2	882.7	-10.22
JIOFIN	230.2	231.6	226.2	228.2	233.6	237.0	338.6	223.3	-7.56
JSWENERGY	560.7	564.5	545.9	553.3	571.9	583.2	617.4	427.8	-0.95

NSE 200 SUPPORT & RESISTANCE

SYMBOL	CLOSE	PIVOT	SUPT 2	SUPT 1	RESI 1	RESI 2	52 W H	52 W L	30 D % CHG
JSWSTEEL	1269.8	1271.4	1231.9	1250.9	1290.4	1310.9	1328.0	981.4	-0.05
JUBLFOOD	425.1	425.2	415.9	420.5	429.8	434.6	719.0	408.8	-10.20
KALYANKJIL	338.7	344.0	325.2	332.0	350.8	362.8	617.7	337.0	-20.34
KEI	5166.5	5217.2	5036.2	5101.3	5282.3	5398.2	5476.3	3525.3	1.56
KOTAKBANK	388.1	386.6	375.9	382.0	392.7	397.3	453.2	345.5	1.89
KPITTECH	733.0	741.1	710.7	721.8	752.2	771.5	1434.5	624.9	0.61
LAURUSLABS	1385.7	1397.7	1351.2	1368.5	1415.0	1444.2	1457.0	641.1	13.09
LENSKART	500.2	502.7	491.8	496.0	506.9	513.7	557.7	356.1	2.30
LGEINDIA	1540.4	1542.4	1517.9	1529.2	1553.7	1566.9	1749.0	1304.1	2.31
LICHSGFIN	541.0	544.8	530.2	535.6	550.2	559.4	646.5	458.9	-6.79
LODHA	862.0	869.7	835.5	848.7	882.9	903.9	1531.0	650.8	-10.40
LT	3917.5	3926.8	3864.0	3890.7	3953.5	3989.6	4440.0	3288.1	-1.09
LTF	260.4	262.5	253.7	257.0	265.8	271.3	329.5	180.6	-13.99
LTM	3944.1	3968.4	3883.2	3913.7	3998.9	4053.6	6429.5	3901.0	-9.22
LUPIN	2247.2	2256.6	2218.2	2232.7	2271.1	2295.0	2494.0	1836.8	-5.53
M&M	2952.5	2965.2	2908.4	2930.5	2987.3	3022.0	3839.9	2896.0	-11.33
M&MFIN	277.3	280.3	269.2	273.2	284.3	291.4	412.2	246.4	-18.31
MANKIND	2376.2	2384.3	2339.7	2357.9	2402.5	2428.9	2716.5	1909.7	-2.35
MARICO	819.9	820.7	796.9	808.4	832.2	844.5	848.8	680.3	-1.12
MARUTI	13073.0	13109.3	12954.3	13013.7	13168.7	13264.3	17370.0	12176.0	-4.76
MAXHEALTH	1010.1	1011.9	986.6	998.4	1023.6	1037.1	1314.3	903.0	-0.44
MAZDOCK	2367.6	2391.7	2299.3	2333.5	2425.9	2484.1	3437.4	2057.4	-11.00
MCX	2743.8	2768.7	2671.1	2707.5	2805.1	2866.3	3480.0	1460.8	-11.29
MFSL	1598.3	1603.5	1561.6	1579.9	1621.8	1645.4	1892.5	1433.6	-5.87
MOTHERSON	142.2	142.5	138.7	140.4	144.2	146.3	151.8	89.7	7.55
MOTILALOFS	841.0	847.5	822.0	831.5	857.0	872.9	1097.1	614.9	-4.40
MPHASIS	2297.8	2317.6	2250.6	2274.2	2341.2	2384.6	3037.2	2013.0	3.83
MRF	122595	122678	121518	122057	123217	123838	163600	122000	-6.08
MUTHOOTFIN	2898.8	2909.6	2819.6	2859.2	2949.2	2999.6	4149.5	2461.1	-17.45
NATIONALUM	376.2	377.4	365.6	370.9	382.7	389.2	445.2	179.9	-6.15
NAUKRI	971.3	974.4	952.5	961.9	983.8	996.4	1550.0	908.3	-1.10
NESTLEIND	1438.3	1434.2	1388.6	1413.4	1459.0	1479.8	1498.1	1084.7	-3.00
NHPC	72.7	73.2	71.2	72.0	73.9	75.2	92.3	71.6	-9.87
NMDC	88.5	88.9	86.5	87.5	89.8	91.2	97.5	66.8	-0.26
NTPC	351.7	353.9	346.0	348.8	356.7	361.8	414.4	315.6	-12.58
NYKAA	262.4	264.2	257.2	259.8	266.8	271.1	285.6	191.2	-3.96
OBEROIRLTY	1591.6	1606.1	1552.2	1571.9	1625.8	1660.0	2005.0	1391.2	-6.64
OFSS	9470.0	9555.7	9238.7	9354.3	9671.3	9872.7	10584.5	6234.5	1.59
OIL	427.4	439.2	394.1	410.7	455.8	484.2	531.0	384.6	-5.12
ONGC	251.9	255.0	244.5	248.2	258.7	265.5	307.5	228.6	-9.78
PAGEIND	37955.0	38405.0	36925.0	37440.0	38920.0	39885.0	50590.0	29805.0	1.65
PATANJALI	419.6	421.6	409.5	414.6	426.7	433.7	653.9	408.2	-9.38
PAYTM	1066.3	1083.8	1024.1	1045.2	1104.9	1143.5	1381.8	857.2	-9.98
PERSISTENT	4928.0	4971.7	4818.7	4873.3	5026.3	5124.7	6599.0	4449.1	-3.69
PFC	431.3	434.0	423.2	427.3	438.0	444.7	486.5	329.9	-6.68
PHOENIXLTD	1765.7	1776.2	1710.8	1738.3	1803.7	1841.6	1993.0	1402.5	-3.58
PIDILITIND	1506.5	1508.4	1455.5	1481.0	1533.9	1561.3	1575.0	1259.0	2.17
PIIND	2807.7	2828.1	2744.8	2776.3	2859.6	2911.4	4330.0	2657.2	-9.85
PNB	107.2	108.2	104.6	105.9	109.5	111.8	135.2	98.5	-0.04
POLICYBZR	1509.6	1515.8	1468.8	1489.2	1536.2	1562.8	1978.0	1364.0	-7.91

NSE 200 SUPPORT & RESISTANCE									
SYMBOL	CLOSE	PIVOT	SUPT 2	SUPT 1	RESI 1	RESI 2	52 W H	52 W L	30 D % CHG
POLYCAB	9523.5	9562.2	9356.2	9439.8	9645.8	9768.2	9833.0	5760.0	5.03
POWERGRID	287.2	286.9	281.5	284.3	289.8	292.4	325.0	250.0	-8.57
POWERINDIA	33265.0	33775.0	31875.0	32570.0	34470.0	35675.0	38785.0	16111.0	-1.85
PREMIERENE	1065.9	1073.9	1040.4	1053.2	1086.7	1107.4	1136.4	660.0	5.67
PRESTIGE	1328.0	1335.7	1296.5	1312.3	1351.5	1374.9	1814.0	1090.0	-12.25
RADICO	3477.1	3484.6	3442.2	3459.6	3502.0	3527.0	3679.0	2500.0	0.03
RECLTD	348.8	350.5	343.5	346.1	353.1	357.5	428.7	304.1	-3.05
RELIANCE	1258.8	1271.2	1225.1	1242.0	1288.1	1317.3	1611.8	1254.4	-12.30
RVNL	228.2	230.4	222.4	225.3	233.3	238.5	442.8	227.0	-25.15
SAIL	181.7	183.1	177.2	179.5	185.4	189.0	209.7	118.1	-1.57
SBICARD	580.7	583.8	571.4	576.1	588.4	596.1	1027.3	571.3	-10.26
SBILIFE	1728.7	1741.6	1689.8	1709.3	1761.1	1793.4	2132.0	1720.0	-7.70
SBIN	1003.3	1005.1	992.2	997.7	1010.6	1018.0	1234.7	781.7	-1.81
SHREECEM	23850.0	23755.0	22920.0	23385.0	24220.0	24590.0	32490.0	22550.0	-6.51
SHRIRAMFIN	897.4	902.1	881.6	889.5	910.0	922.7	1108.0	566.5	-10.92
SIEMENS	3582.7	3591.2	3510.6	3546.6	3627.2	3671.8	3937.3	2826.0	-7.00
SOLARINDS	17697.0	17916.3	17132.3	17414.7	18198.7	18700.3	18874.0	11646.0	9.62
SRF	2734.1	2729.3	2673.5	2703.8	2759.6	2785.1	3325.0	2355.0	-1.47
SUNPHARMA	1786.4	1785.0	1758.4	1772.4	1799.0	1811.6	1916.6	1548.0	-3.29
SUPREMEIND	3488.5	3500.0	3436.4	3462.5	3526.1	3563.6	4739.0	3182.0	-4.92
SUZLON	54.1	54.4	52.8	53.4	55.1	56.1	69.5	38.2	-1.76
SWIGGY	242.3	245.2	233.9	238.1	249.4	256.5	474.0	238.5	-13.83
TATACAP	321.3	322.5	314.3	317.8	326.0	330.7	367.3	296.0	-0.53
TATACOMM	1978.6	1975.2	1936.2	1957.4	1996.4	2014.2	2049.9	1322.5	22.97
TATACONSUM	1108.0	1114.4	1081.1	1094.6	1127.9	1147.7	1282.7	1007.2	-5.54
TATAELXSI	4092.2	4127.8	3988.2	4040.2	4179.8	4267.4	6735.0	3945.0	-5.26
TATAINVEST	649.7	653.9	636.0	642.9	660.8	671.8	1184.7	538.9	-9.42
TATAPOWER	394.8	397.0	387.4	391.1	400.7	406.6	464.9	342.5	-9.44
TATASTEEL	199.3	200.2	194.8	197.1	202.5	205.6	224.4	149.8	-7.34
TCS	2153.9	2159.8	2123.8	2138.9	2174.9	2195.8	3538.0	2132.8	-10.13
TECHM	1478.9	1482.1	1457.0	1468.0	1493.1	1507.2	1854.0	1304.1	1.09
TIINDIA	3062.3	3076.4	2970.4	3016.4	3122.4	3182.4	3419.9	2164.9	0.40
TITAN	4042.1	4065.4	3981.3	4011.7	4095.8	4149.5	4605.0	3303.1	-10.38
TMCV	364.9	365.7	357.9	361.4	369.2	373.5	509.0	306.3	-15.10
TMPV	381.0	383.3	374.5	377.7	386.5	392.1	744.0	294.3	7.02
TORNTPHARM	4463.7	4492.0	4384.1	4423.9	4531.8	4599.9	4712.9	3140.1	1.69
TRENT	2754.7	2781.2	2679.0	2716.8	2819.0	2883.4	4174.0	2183.7	-2.73
TVSMOTOR	3334.9	3346.4	3288.2	3311.5	3369.7	3404.6	3970.0	2655.1	-9.75
ULTRACEMCO	10866.0	10879.0	10736.0	10801.0	10944.0	11022.0	13110.0	10325.0	-9.12
UNIONBANK	166.5	167.7	163.0	164.7	169.5	172.5	205.5	124.6	0.14
UNITDSPR	1259.9	1263.0	1240.3	1250.1	1272.8	1285.7	1645.0	1210.8	-1.39
UPL	611.0	617.8	587.6	599.3	629.5	647.9	812.2	565.2	-5.53
VBL	526.3	529.7	515.5	520.9	535.1	544.0	544.4	381.0	3.72
VEDL	299.3	300.7	290.7	295.0	305.0	310.7	795.0	268.7	1.20
VMM	118.8	119.6	116.1	117.5	121.0	123.1	157.6	98.8	-4.10
VOLTAS	1290.0	1297.9	1264.2	1277.1	1310.8	1331.6	1582.5	1186.8	-2.48
WAAREEENER	3017.2	3033.4	2966.7	2991.9	3058.6	3100.1	3865.0	2403.0	-6.54
WIPRO	178.9	179.9	176.1	177.5	181.3	183.7	273.1	178.5	-9.74
YESBANK	22.6	22.9	21.9	22.2	23.2	23.9	24.3	17.2	-1.31
ZYDUSLIFE	1098.3	1104.4	1079.7	1089.0	1113.7	1129.1	1119.8	835.5	16.70

Disclosure & Disclaimer :

HDFC Securities Limited (HSL) is a SEBI Registered Research Analyst having registration no. INH000002475.

This report has been prepared by HDFC Securities Ltd and is solely for information of the recipient only. The report must not be used as a singular basis of any investment decision. The views herein are of a general nature and do not consider the risk appetite or the particular circumstances of an individual investor; readers are requested to take professional advice before investing. "This report may have been refined using AI tools to enhance clarity and readability."

Nothing in this document should be construed as investment advice. Each recipient of this document should make such investigations as they deem necessary to arrive at an independent evaluation of an investment in securities of the companies referred to in this document (including merits and risks) and should consult their own advisors to determine merits and risks of such investment. The information and opinions contained herein have been compiled or arrived at, based upon information obtained in good faith from sources believed to be reliable. Such information has not been independently verified and no guaranty, representation of warranty, express or implied, is made as to its accuracy, completeness or correctness. All such information and opinions are subject to change without notice. Descriptions of any company or companies or their securities mentioned herein are not intended to be complete. HSL is not obliged to update this report for such changes. HSL has the right to make changes and modifications at any time.

This report is not directed to, or intended for display, downloading, printing, reproducing or for distribution to or use by, any person or entity who is a citizen or resident or located in any locality, state, country or other jurisdiction where such distribution, publication, reproduction, availability or use would be contrary to law or regulation or what would subject HSL or its affiliates to any registration or licensing requirement within such jurisdiction.

If this report is inadvertently sent or has reached any person in such country, especially, United States of America, the same should be ignored and brought to the attention of the sender. This document may not be reproduced, distributed or published in whole or in part, directly or indirectly, for any purposes or in any manner.

Foreign currencies denominated securities, wherever mentioned, are subject to exchange rate fluctuations, which could have an adverse effect on their value or price, or the income derived from them. In addition, investors in securities such as ADRs, the values of which are influenced by foreign currencies effectively assume currency risk. It should not be considered to be taken as an offer to sell or a solicitation to buy any security.

This document is not, and should not, be construed as an offer or solicitation of an offer, to buy or sell any securities or other financial instruments. This report should not be construed as an invitation or solicitation to do business with HSL. HSL may from time to time solicit from, or perform broking, or other services for, any company mentioned in this mail and/or its attachments.

HSL and its affiliated company(ies), their directors and employees may; (a) from time to time, have a long or short position in, and buy or sell the securities of the company(ies) mentioned herein or (b) be engaged in any other transaction involving such securities and earn brokerage or other compensation or act as a market maker in the financial instruments of the company(ies) discussed herein or act as an advisor or lender/borrower to such company(ies) or may have any other potential conflict of interests with respect to any recommendation and other related information and opinions.

HSL, its directors, analysts or employees do not take any responsibility, financial or otherwise, of the losses or the damages sustained due to the investments made or any action taken on basis of this report, including but not restricted to, fluctuation in the prices of shares and bonds, changes in the currency rates, diminution in the NAVs, reduction in the dividend or income, etc.

HSL and other group companies, its directors, associates, employees may have various positions in any of the stocks, securities and financial instruments dealt in the report, or may make sell or purchase or other deals in these securities from time to time or may deal in other securities of the companies / organizations described in this report. As regards the associates of HSL please refer the website.

HSL or its associates might have managed or co-managed public offering of securities for the subject company or might have been mandated by the subject company for any other assignment in the past twelve months.

Please note that HDFC Securities has a proprietary trading desk. This desk maintains an arm's length distance with the Research team and all its activities are segregated from Research activities. The proprietary desk operates independently, potentially leading to investment decisions that may deviate from research views.

HSL or its associates might have received any compensation from the companies mentioned in the report during the period preceding twelve months from the date of this report for services in respect of managing or co-managing public offerings, corporate finance, investment banking or merchant banking, brokerage services or other advisory service in a merger or specific transaction in the normal course of business.

HSL or its analysts did not receive any compensation or other benefits from the companies mentioned in the report or third party in connection with preparation of the research report. Accordingly, neither HSL nor Research Analysts have any material conflict of interest at the time of publication of this report. Compensation of our Research Analysts is not based on any specific merchant banking, investment banking or brokerage service transactions. HSL may have issued other reports that are inconsistent with and reach different conclusion from the information presented in this report.

Research entity has not been engaged in market making activity for the subject company. Research analyst has not served as an officer, director or employee of the subject company. We have not received any compensation/benefits from the subject company or third party in connection with the Research Report.

HDFC securities Limited, I Think Techno Campus, Building - B, "Alpha", Office Floor 8, Near Kanjurmarg Station, Opp. Crompton Greaves, Kanjurmarg (East), Mumbai 400 042 Phone: (022) 3075 3400 Fax: (022) 2496 5066

Compliance Officer: Murli V Karkera Email: complianceofficer@hdfcsec.com Phone: (022) 3045 3600

For grievance redressal contact Customer Care Team Email: customer-care@hdfcsec.com Phone: (022) 3901 9400

HDFC Securities Limited, SEBI Reg. No.: NSE, BSE, MSEI, MCX: INZ000186937; AMFI Reg. No. ARN: 13549; PFRDA Reg. No. POP: 11092018; IRDA Corporate Agent License No.: CA0062; SEBI Research Analyst Reg. No.: INH000002475; SEBI Investment Adviser Reg. No.: INA000011538; CIN - U67120MH2000PLC152193

Investment in securities market are subject to market risks. Read all the related documents carefully before investing.

Mutual Funds Investments are subject to market risk. Please read the offer and scheme related documents carefully before investing.

Registration granted by SEBI, membership of BASL (in case of IAs) and certification from NISM in no way guarantee performance of the intermediary or provide any assurance of returns to investors.