

PRIME DAILY

August 26, 2025



Global Markets Await Nvidia Results, U.S. Imposes Additional 25% Tariff on Indian Imports

U.S. stocks declined Monday, with major averages posting a lacklustre performance before coming under pressure into the close. The S&P 500 fell 0.4% and the Dow shed over 300 points as investors took profits following last Friday's Fed-fuelled rally that lifted the Dow to a record closing high.

Jerome Powell's dovish Jackson Hole speech on Friday sparked a sharp rally in stocks and risk assets by reviving September rate cut expectations. However, Monday's session saw consolidation as optimism gave way to caution, with focus shifting to upcoming inflation data and Fed communications.

Nvidia, the S&P 500's largest constituent, will report quarterly results on Wednesday amid high expectations for AI chip demand. The stock, which has doubled since April lows and gained 32% year-to-date, traded choppily as investors weighed earnings risk against the broader AI narrative. Tech stocks remained volatile ahead of this closely watched release, viewed as a bellwether for AI and technology sentiment.

Traders appeared reluctant to make significant moves ahead of key events this week, including Nvidia's earnings and Friday's Commerce Department report containing the Fed's preferred inflation readings. Markets will also monitor data on durable goods orders, consumer confidence, and second-quarter GDP.

On the economic front, the Commerce Department reported new home sales fell 0.6% to an annual rate of 652,000 in July, following June's upwardly revised 4.1% surge to 656,000. The decline missed economists' expectations for a 0.5% increase to 630,000.

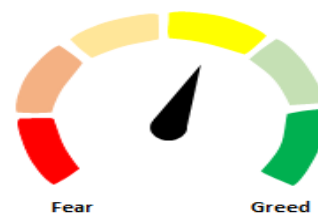
The U.S. dollar rebounded modestly after Powell's comments triggered a sharp selloff last week.

Trade policy uncertainty persists as the U.S. recently notified a 50% tariff on select Indian exports.

Back home, in the first session of the holiday-shortened week, Nifty gained 97 points (0.39%) to close at 24,967, supported by firm global cues. Markets will remain closed tomorrow to celebrate the Shree Ganesh Chaturthi festival.

The index formed an inside bar candlestick pattern, signalling a pause after the recent decline. Such patterns typically mark low volatility phases that often precede sharp directional moves. A sustained break above 25,084—the high of the last two sessions—would confirm a bullish reversal. On the downside, the 20- and 50-DEMA, converging near 24,847, remain immediate support for Nifty.

Indian markets are slated to open subdued on the back of weak global cues.



Global Equity Indices

	Close	Abs. Change	% Change
Indian Indices			
Sensex	81,636	329.1 ▲	0.40%
Nifty	24,968	97.7 ▲	0.39%
Midcap	57,702	71.8 ▲	0.12%
Small cap	17,912	-8.0 ▼	-0.04%
US Indices			
Dow Jones	45,282	-349.3 ▼	-0.77%
S&P 500	6,439	-27.6 ▼	-0.43%
Nasdaq	21,449	-47.3 ▼	-0.22%
European Indices			
FTSE	9,321	0.0 ▬	0.00%
DAX	24,273	-90.0 ▼	-0.37%
CAC	7,843	-126.7 ▼	-1.59%
Asian Indices			
Shanghai	3,877	51.1 ▲	1.34%
Hang Seng	25,755	415.7 ▲	1.64%
Nikkei	42,355	-278.8 ▼	-0.65%

Indices Futures

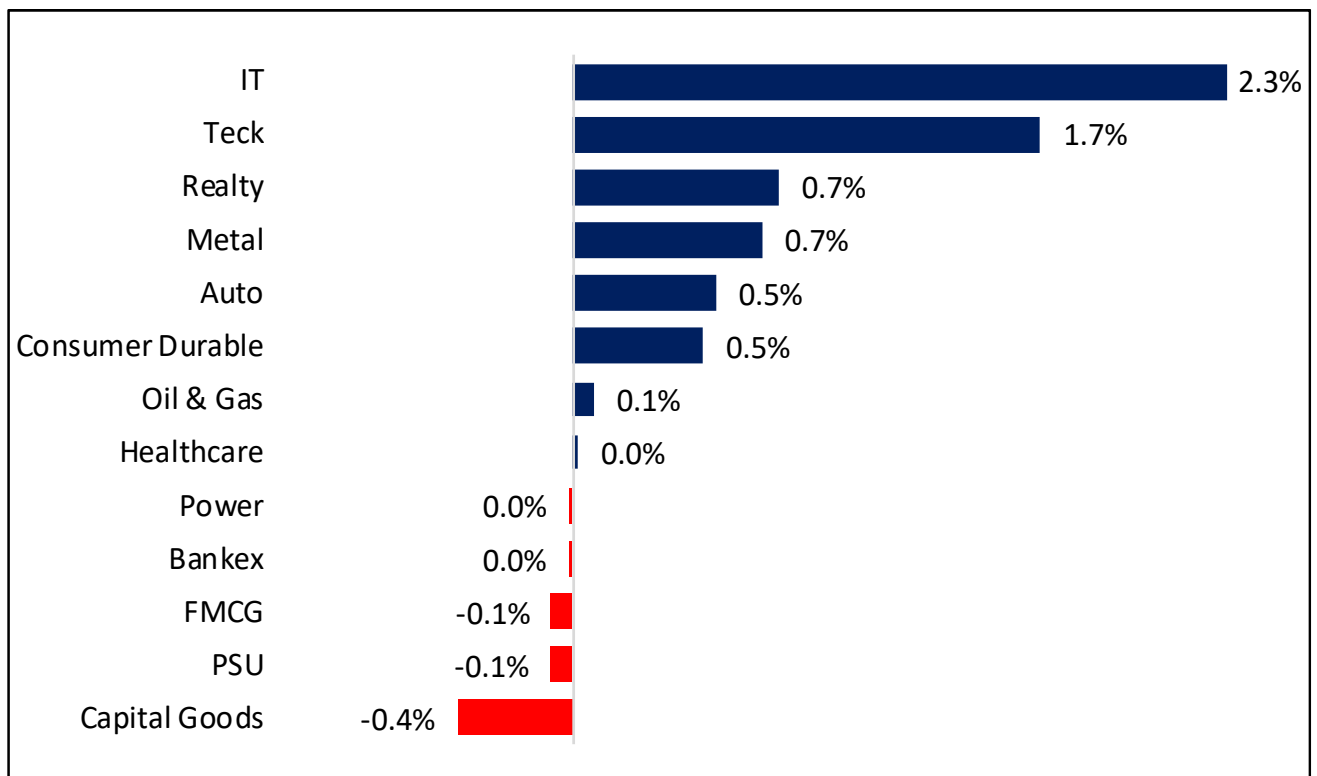
	Close	Abs. Change	% Change
IFSC Nifty			
IFSC Nifty	24,911	-26.0 ▼	-0.10%
US Indices			
Dow Jones	45,302	-49.0 ▼	-0.11%
S&P 500	6,447	-8.3 ▼	-0.13%
Nasdaq	23,453	-45.5 ▼	-0.19%
European Indices			
FTSE	9,319	-33.5 ▼	-0.36%
DAX	24,202	-102.0 ▼	-0.42%
Asian Indices			
Shanghai	4,454	-4.8 ▼	-0.11%
Hang Seng	25,772	-92.0 ▼	-0.36%
Nikkei	42,280	-490.0 ▼	-1.15%

Nifty50 Index Contributors

Top Five (Positive Contributors)		
Stock	Points	% Change
INFY	35.5	0.14
TCS	19.5	0.08
HCLTECH	8.9	0.04
RELIANCE	5.1	0.02
HINDALCO	3.7	0.01

Bottom Five (Negative Contributors)		
Stock	Points	% Change
ICICIBANK	-5.0	-0.02
BEL	-2.2	-0.01
APOLLOHOSP	-1.6	-0.01
NESTLEIND	-1.6	-0.01
BHARTIARTL	-1.6	-0.01

BSE Sectoral Leaders & Laggards



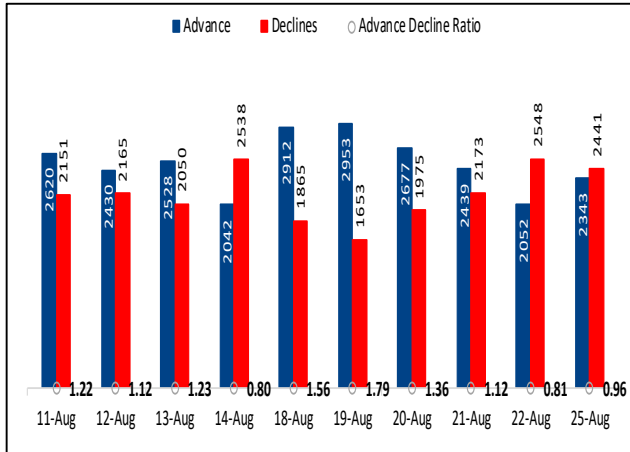
Nifty50 Index Top Pops & Drops

Nifty50 Top Five Gainers			
Symbol	LTP	% Change	Volume
INFY	1,532.1	3.00	10,694,531
TCS	3,140.6	2.84	3,448,370
HCLTECH	1,504.2	2.58	2,764,914
WIPRO	253.8	2.09	16,391,069
HINDALCO	715.9	1.65	4,539,337

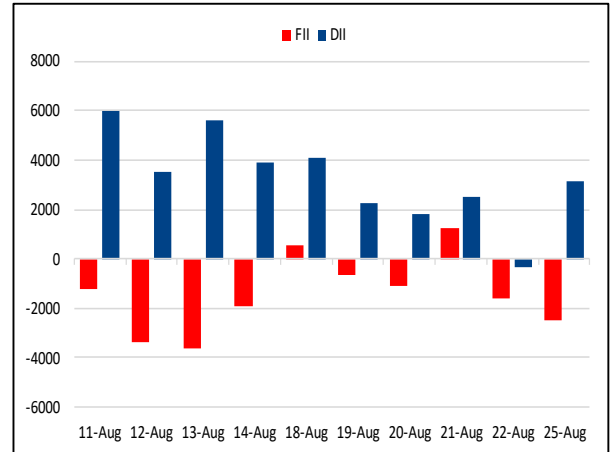
Nifty50 Top Five Losers			
Symbol	LTP	% Change	Volume
ADANIENT	2,302.9	-0.95	542,455
APOLLOHOSP	7,851.0	-0.90	402,979
NESTLEIND	1,153.0	-0.85	931,358
BEL	372.1	-0.75	8,577,673
SBILIFE	1,846.8	-0.66	613,536



BSE Advance & Declines



Institutional Activities



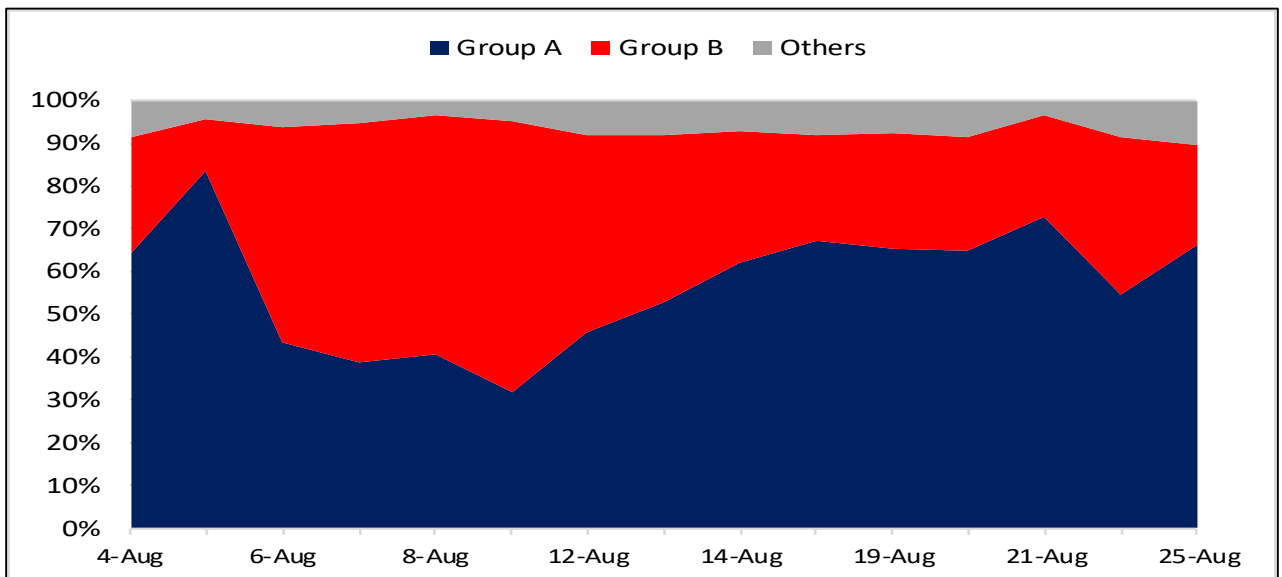
52 Week High Stocks

	25-Aug-25	22-Aug-25
BSE Universe	225	193
BSE Group A Stocks Hitting 52 Week High		
Stocks	Price	52 Week High
JSL	797.8	818.2
UPL	723.0	740.8
AIIL	3037.5	3055.0
ECLERX	4246.0	4275.5
M&M	3399.7	3430.1




52 Week Low Stocks

	25-Aug-25	22-Aug-25
BSE Universe	107	70
BSE Group A Stocks Hitting 52 Week Low		
Stocks	Price	52 Week Low
Nil		

BSE Cash Market Turnover Participant-wise



News Highly Sensitive to Stock Price

Impact	Stock	News
	Protean eGov Technologies	Protean eGov Technologies Ltd has received a Work Order from Unique Identification Authority of India (UIDAI), New Delhi, Government of India for providing services as "Service Provider for Establishing and Running District Level Aadhaar Seva Kendra (ASK)" of around Rs 1160 crores (exclusive of taxes). It is to be implemented over the next six years.
	Sai Life Sciences	US private equity firm TPG, a prominent public shareholder of Sai Life Sciences Ltd., is likely to exit the company in a bulk deal worth Rs 2,640 crore. TPG affiliate TPG Asia VII SF Pte shall sell 14.72% of its entire shareholding in the company for Rs 860 per equity share, which is at a 5.2% discount to the last closing price.
	PSU Banks	<p>The Government of India has appointed global investment banking firm Goldman Sachs as the sole transaction advisor for the stake sale in four public sector banks (PSBs) - UCO Bank, Central Bank of India, Punjab & Sind Bank, and Indian Overseas Bank (IOB). Goldman Sachs will be responsible for structuring the deal, identifying potential investors, and ensuring smooth execution of the stake sale.</p> <p>Government is preparing to invite financial bids for the strategic sale of IDBI Bank between October and December 2025, to select a successful bidder by the end of FY26.</p>

Stock	News
Oil and Gas	India's crude oil imports fell 8.7% in July to 18.56 million tons—the lowest since February 2024 - while fuel demand also dropped 4.3%. Year-on-year, crude imports declined 4.3% and product imports 12.8%. The fall may reflect U.S. tariff threats over Russian oil purchases. India plans to address U.S. trade ties openly, even as refiners resume discounted Russian oil buys.
Bharat Petroleum Corporation Ltd	Bharat Petroleum Corporation Ltd is considering establishing a greenfield oil refinery and petrochemical complex near Ramayapatnam Port in Andhra Pradesh to meet India's growing energy demands. The company is evaluating the project's feasibility, anticipating a significant expansion of its refining infrastructure. BPCL aims to achieve net-zero emissions by 2040 and is investing heavily in renewable energy and green hydrogen projects.
Infosys Ltd	Infosys Ltd is overhauling its project delivery model and bundling services to drive growth in an uncertain market. The move includes pitching artificial intelligence (AI) benefits to clients and reorganising internal structures to allow employees to work on projects beyond their traditional business units.
PayTM	Paytm's board approved rights issue investments of Rs 300 crore in Paytm Money and Rs 155 crore in Paytm Services to strengthen its core businesses. The company also said it would consolidate its Foster Payment and First Games subsidiaries to create a simplified group structure.
IREDA	IREDA has set a revenue target of Rs 8,200 crore for the financial year 2026, after it signed a performance-based Memorandum of Understanding (MoU) with the Ministry of New and Renewable Energy (MNRE), outlining strategic targets for the fiscal year 2025-26.
Eris Lifesciences	Eris Lifesciences Limited announced that a manufacturing unit in its Ahmedabad campus has received approval from ANVISA, which is Brazil's national health regulatory agency. This approval follows a successful inspection conducted by the agency in May 2025 and enables Eris to enter Brazil, the largest pharmaceutical market in South America. The said manufacturing facility has been successfully inspected by various other regulatory agencies earlier in the year.
Shree Refrigerations	The company received an order of Rs 106.6 crore from Hindustan Shipyard. It is to be executed in the next 24-30 months.

Stock	News
Godrej Properties	Godrej Properties Ltd. said it sold homes worth over Rs 1,000 crore at the launch of its Godrej Regal Pavilion project in Hyderabad. Godrej Regal Pavilion has a developable potential of 4.14 million square feet and an estimated revenue potential of Rs 3,600 crore, the company said.

Key Events

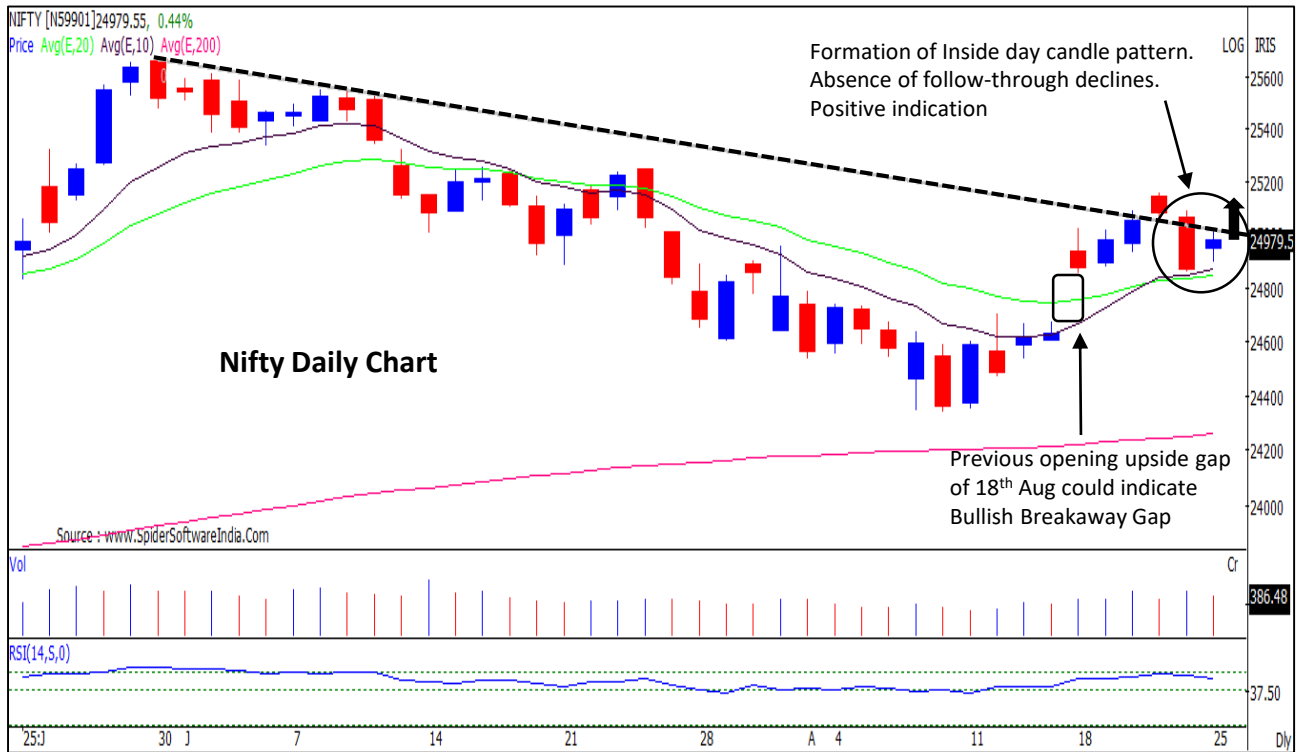
U.S. New Home Sales Pull Back From Upwardly Revised Level In July

New home sales in the U.S. decreased from an upwardly revised level in the month of July, according to a report released by the Commerce Department on Monday. The Commerce Department said new home sales fell by 0.6 percent to an annual rate of 652,000 in July after surging by 4.1 percent to an upwardly revised rate of 656,000 in June.

US Building Permits Fall Short of Forecast, Signaling Economic Caution

The latest data on Building Permits in the United States has been released, revealing a decline of 2.2%. The drop in permits, which are a key indicator of future construction activity, suggests a potential slowdown in the country's economy. The actual number of permits fell short of the forecasted decline of 2.8%. While the decrease was not as steep as predicted, the fact that the number of permits issued was still in the negative indicates a cautious outlook among builders.

Nifty : Bears seems to be losing strength. Absence of follow-through weakness after a decline of Friday. Positive for bulls to comeback.



Nifty IT : Bullish setup on the charts. More upside could be expected in frontline and midcap IT stocks

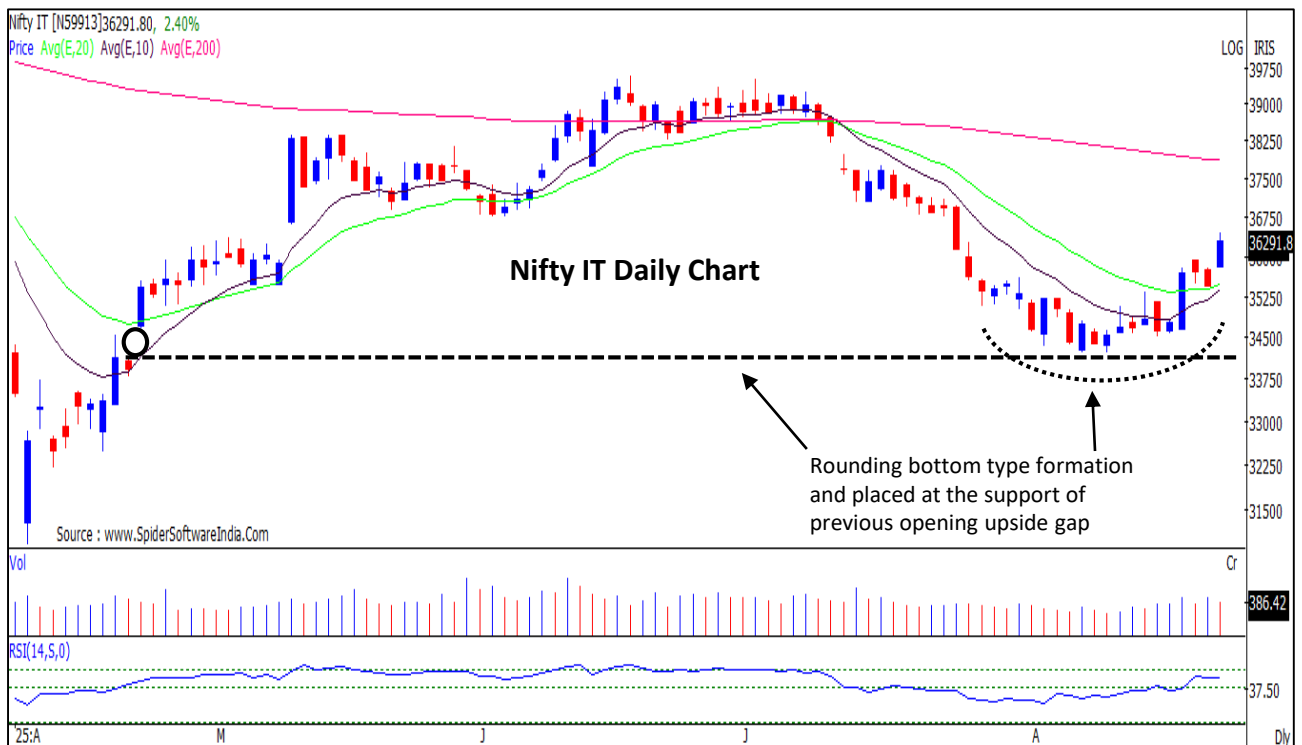
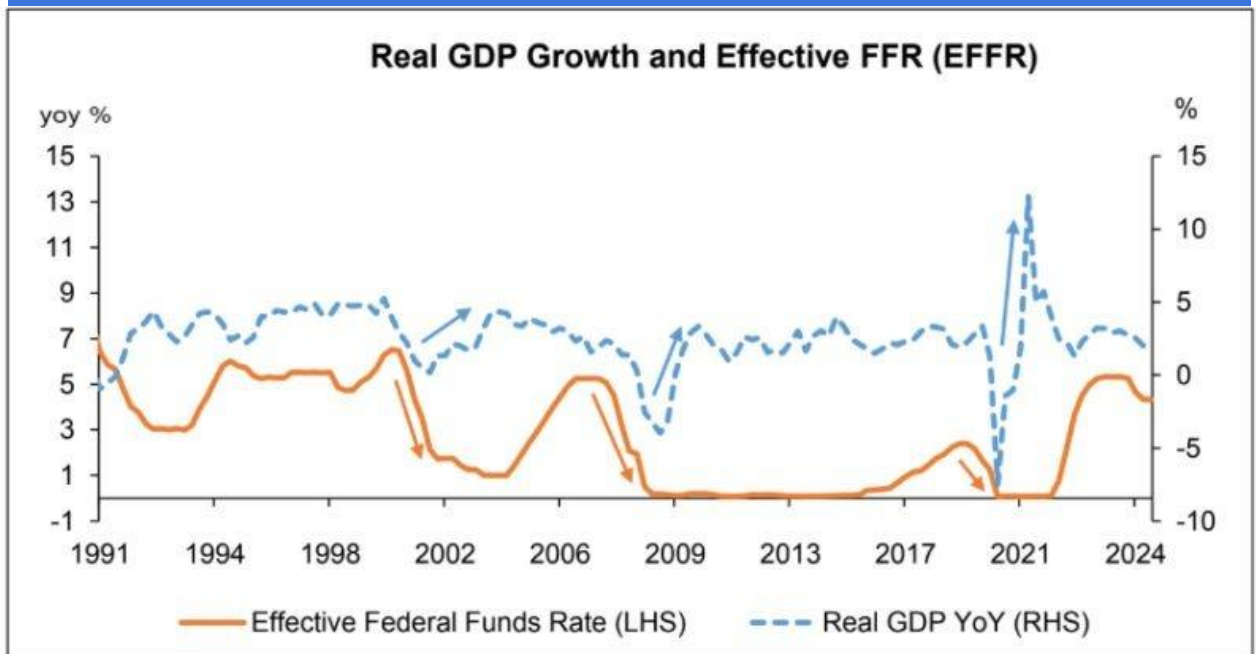


CHART WITH INTERESTING OBSERVATION

What a September Rate Cut Means for the U.S. Economy

- Since Jerome Powell's moderately dovish Jackson Hole speech on August 22, the Fed Chair has signalled to markets that a rate cut in September is likely—currently priced in with an 80% probability, according to CME FedWatch.
- This raises a key question: when will these rate cuts begin to filter through to the real economy? Historically, changes to the federal funds rate take time to influence economic activity. Data suggests that cuts typically begin to affect GDP growth with a lag of two to three quarters, with the full impact felt only after about a year (see figure below). This delay is expected—monetary policy is not an instant remedy.
- What this implies is that the U.S. labour market and broader economy are likely to continue softening through the remainder of 2025 and potentially into the first half of 2026. Beyond that, the trajectory will largely depend on the policy direction taken by the current Trump administration—ultimately determining whether the U.S. faces a soft or hard landing.

US Real GDP Growth and Effective Fed Funds Rate



Source: FRED

F&O Highlights

LONG UNWINDING WAS SEEN IN BANKNIFTY FUTURES

Create shorts with the SL of 25050 levels.

- On the first session of the holiday-shortened week, Nifty gained 97 points or 0.39% buoyed by strong global cues, to close at 24967..
- Long Build-Up was seen in the Nifty Futures where Open Interest rose by 2.84% with Nifty rising by 0.39%.
- Long Unwinding was seen in the Bank Nifty Futures where Open Interest fell by 1.33% with Bank Nifty falling by 0.02%.
- Nifty Open Interest Put Call ratio rose to 0.88 levels from 0.73 levels.
- Amongst the Nifty options (28-Aug Expiry), Call writing is seen at 25000-25100 levels, indicating Nifty is likely to find strong resistance in the vicinity of 25000-25100 levels. On the lower side, an immediate support is placed in the vicinity of 24900-24800 levels where we have seen Put writing.
- Long build-up was seen by FII's in the Index Futures segment where they net bought worth 205 cr with their Open Interest going up by 14503 contracts.

Index	Expected Trend	Prev. Close	Buy/Sell	Stop Loss	Target
NIFTY FUT	DOWN	24989.70	SELL AROUND 24950	25050	24800
BANK NIFTY FUT	DOWN	55258.80	SELL AROUND 55300	55600	54900

Nifty50 Snapshot			
	25-Aug-25	22-Aug-25	% Chg.
Nifty Spot	24967.75	24870.10	0.39
Nifty Futures	24989.70	24898.20	0.37
Premium/ (Discount)	21.95	28.10	N.A.
Open Interest (OI)	1.82	1.77	2.84
Nifty PCR	0.88	0.73	20.91

Bank Nifty Snapshot			
	25-Aug-25	22-Aug-25	% Chg.
Bank Nifty Spot	55139.30	55149.40	-0.02
Bank Nifty Futures	55258.80	55270.60	-0.02
Premium/ (Discount)	119.50	121.20	N.A.
Open Interest (OI)	0.32	0.32	-1.33
Bank Nifty PCR	0.56	0.59	-3.70

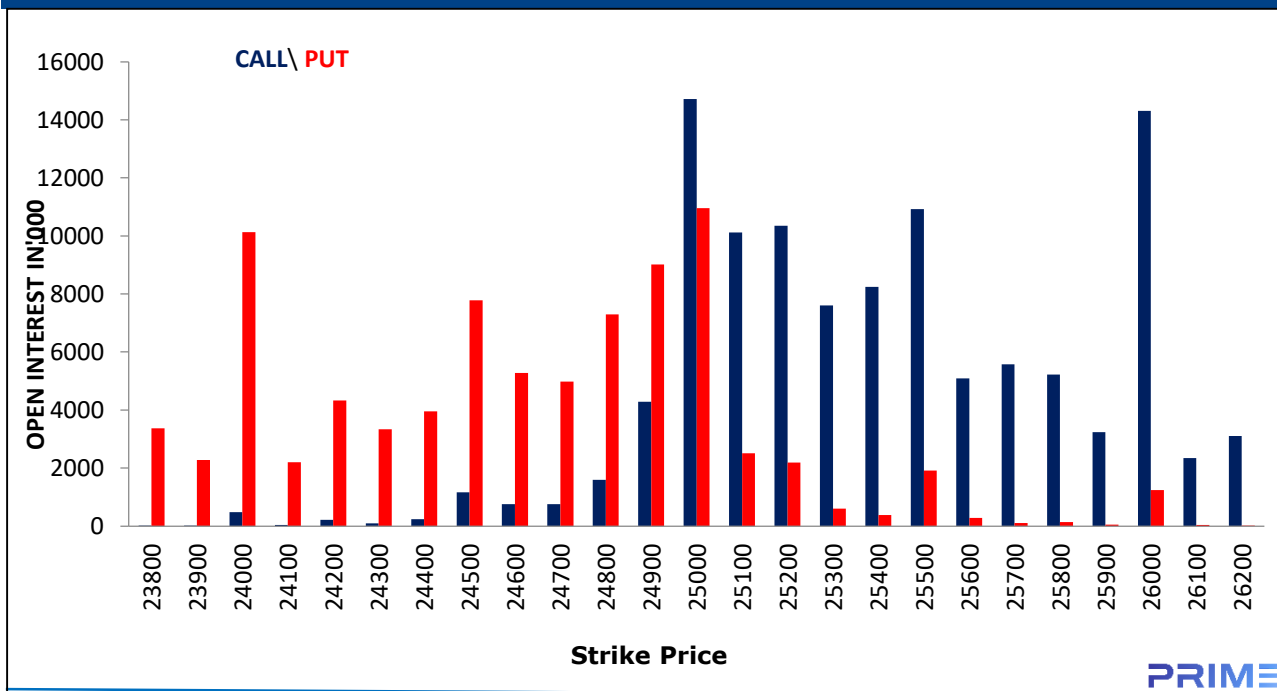
Nifty Options Highest OI (Monthly)			
CALL		PUT	
Strike Price	Open Interest (Contracts)	Strike Price	Open Interest (Contracts)
25000	196212	25000	146131

FII Activity On 25 Aug 2025

	BUY		SELL		NET	OPEN INTEREST	
	Contracts	Value (Rs Cr)	Contracts	Value (Rs Cr)	(Rs Cr)	Contracts	Value (Rs Cr)
Index Futures	67653	12669	66382	12463	205	232720	43780
Nifty Futures	49153	9213	49043	9232	-19	166649	31294
Bank Nifty Fut.	7554	1463	6064	1178	285	41317	7999
Index Options	4214366	792480	4235221	796772	-4292	1685377	316571
Nifty Options	3659822	686635	3679837	690767	-4132	1391487	260567
Bank Nifty Opt.	414650	80886	417320	81352	-466	246834	47636
Stock Futures	2288550	158041	2273114	157144	898	5704931	397650
Stock Options	426085	30205	419669	29667	538	410910	28169

FII's Open Interest (Contracts)

Date	Index Futures	Nifty Futures	Bank nifty Futures	Index Options	Nifty Options	Bank Nifty Options	Stock Futures	Stock Options
25-Aug-25	232720	166649	41317	1685377	1391487	246834	5704931	410910
22-Aug-25	218217	151299	42799	1582511	1306544	228101	5680093	433872
Net Contracts	14503	15350	-1482	102866	84943	18733	24838	-22962

Nifty Monthly (28 – Aug) Option Open Interest Distribution


Top Gainers OI Wise		
Company	Future OI (%)	Price (%)
NUVAMA	12	-2
CDSL	10	-2
DALBHARAT	10	1
DELHIVERY	8	1
NYKAA	8	2

Top Losers OI Wise		
Company	Future OI (%)	Price (%)
ABFRL	-33	1
CESC	-22	-2
JSL	-19	2
ATGL	-18	2
POONAWALLA	-17	0

Top Gainers Price Wise		
Company	Future OI (%)	Price (%)
IDEA	6	5
JUBLFOOD	-1	5
PGEL	-9	4
ZYDUSLIFE	4	3
INFY	-3	3

Top Losers Price Wise		
Company	Future OI (%)	Price (%)
ANGELONE	7	-3
LTF	-1	-2
CDSL	10	-2
FORTIS	-4	-2
MANKIND	-1	-2

Long Buildup		
Company	Future OI (%)	Price (%)
DALBHARAT	10	1
DELHIVERY	8	1
NYKAA	8	2
SBICARD	7	0
LICI	6	1

Short Buildup		
Company	Future OI (%)	Price (%)
NUVAMA	12	-2
CDSL	10	-2
ANGELONE	7	-3
NHPC	6	-1
FEDERALBNK	6	-1

Long Unwinding		
Company	Future OI (%)	Price (%)
CESC	-22	-2
SJVN	-10	0
RVNL	-7	-1
IEX	-5	0
BANKINDIA	-5	0

Short Covering		
Company	Future OI (%)	Price (%)
ABFRL	-33	1
JSL	-19	2
ATGL	-18	2
POONAWALLA	-17	0
IRB	-17	3

Securities In Ban For Trade – 26.08.2025

No.	Company Name
1.	RBLBANK
2.	TITAGARH

Economic Calendar

Tuesday	Wednesday	Thursday	Friday	Monday
26 Aug	27 Aug	28 Aug	29 Aug	01 Sep
US: Durable Goods Orders, HPI, Richmond & Dallas Fed Index	India: Holiday China: Industrial Profit, MBA Mortgage Application	India: IIP US: GDP, Core PCE, Initial & Conti. Claims, Pending Home Sales	Japan: IIP India: GDP, Fiscal Bal., Bank Credit US: Personal Income & Spending, MNI Chicago PMI, Kansas Fed Activity	US: Holiday Japan, UK, EU, India; Mfg. PMI EU: Unemployment Rate

Open Derivatives Trading Calls

NO	RECO DT	RECO	COMPANY NAME	BUY RANGE	CMP	SL	TARGET	UPSIDE %	VALID TILL
1	25-AUG-25	BUY	BANK NIFTY AUG FUT	55259-55062	55,235.20	54962	55762	1.0	28-AUG-25
2	25-AUG-25	BUY	NIFTY 28TH AUG 25000 PUT OPTION	81.7	76.40	60	123	61.0	28-AUG-25
3	5-AUG-25	SELL	SUN PHARMA SEPT FUT	1648-1700	1,663.90	1740	1510	9.2	25-SEP-25
4	13-AUG-25	SELL	OIL INDIA SEP FUT	405.45-424	408.65	435	370	9.5	25-SEP-25
5	18-AUG-25	BUY	BOSCH AUG FUT	39000-39590	39,200.00	38550	41600	6.1	28-AUG-25
6	19-AUG-25	BUY	CANARA BANK SEP FUT	112.51-110	109.67	108	118	7.6	2-SEP-25
7	22-AUG-25	SELL	OBEROI REALTY SEP FUT	1652-1658	1,681.50	1697	1580	6.0	5-SEP-25
8	22-AUG-25	SELL	AU BANK AUG FUT	743.10-755	749.45	766	706	5.8	28-AUG-25
9	25-AUG-25	BUY	DR REDDY SEP FUT	1281-1265	1,279.20	1254	1347	5.3	8-SEP-25

Open Short-Term MTF Calls

NO.	RECO DT.	RECO	COMPANY NAME	BUY RANGE	CMP	Lower Band	SL	TARGET	UPSIDE %	VALID TILL
1	14-AUG-25	BUY	ASIAN PAINTS	2522-2535	2,492.9	2489	2461	2614	4.9	4-SEP-25
2	19-AUG-25	BUY	TATA MOTORS	702-697.25	686.8	679	666	738	7.5	9-SEP-25
3	20-AUG-25	BUY	HERITAGE FOOD	475-480	471.5	465	457	502	6.5	3-SEP-25
4	20-AUG-25	BUY	FIRST CRY	387-390	379.3	374	368	415	9.4	3-SEP-25
5	21-AUG-25	BUY	PURVANKARA	289-292	288.8	284.0	279	303	4.9	4-SEP-25
6	21-AUG-25	BUY	EMIL	130-128.05	130.5	124.0	121.5	137	5.0	4-SEP-25
7	22-AUG-25	BUY	HAL	4520-4530	4,457.6	4,380.0	4325	4755	6.7	12-SEP-25
8	25-AUG-25	BUY	STOVEKRAFT	673-678	676.4	652.0	642	714	5.6	8-SEP-25

Open Positional MTF Calls

NO.	RECO DT.	RECO	COMPANY NAME	BUY RANGE	CMP	SL	TARGET 1	TARGET 2	UPSIDE %	VALID TILL
1	2-JUN-25	BUY	INDIAN BANK*	617.05-595.75	668.1	617.1	663.8	688.8	3	29-AUG-25
2	9-JUN-25	BUY	JSW INFRA	310-287	303.3	279.0	335.0	350.0	15	30-AUG-25
3	13-AUG-25	BUY	CAPLIN POINTS	2145-2112	2,162.2	1950.0	2320.0	2490	15	12-OCT-25
4	18-AUG-25	BUY	INFRA BEES	942-937.80	943.1	900.0	985.0	1015	8	17-OCT-25
5	18-AUG-25	BUY	ECAPINSURE	23.68-23.80	23.5	23.0	25.1	27	15	16-NOV-25
6	19-AUG-25	BUY	SUPREME INDS	4496-4586	4,631.2	4190.0	4860.0	4960	7	3-OCT-25
7	19-AUG-25	BUY	KIRLOSKAR OIL ENGINE	959-975	976.7	886.0	1043.0	1103	13	18-OCT-25
8	20-AUG-25	BUY	GROWWRAIL	35.01-35.40	34.6	33.6	36.8	37.8	9	18-NOV-25
9	20-AUG-25	BUY	AVANTEL*	137-134.81	150.9	134.8	148.0	160	6	19-OCT-25
10	20-AUG-25	BUY	INDUS TOWER	354-357	354.8	327.5	390.0	415	17	4-OCT-25
11	20-AUG-25	BUY	CHAMBAL FERTILIZERS	560-571	555.7	515.0	615.0	640	15	19-OCT-25
12	25-AUG-25	BUY	VBL	517-523	516.0	486.0	558.0	595	15	9-OCT-25

*= 1st Target Achieved

NSE 200 SUPPORT & RESISTANCE

SYMBOL	CLOSE	R2	R1	PIVOT	S1	S2	5 DMA	20 DMA	% Delivery	Trend
ABB	5100.5	5154.8	5127.7	5086.3	5059.2	5017.8	5098.9	5187.9	65.0	Bearish
ABCAPITAL	285.2	294.6	289.9	287.2	282.5	279.8	286.7	272.5	41.9	Bullish
ABFRL	82.0	84.6	83.3	82.1	80.8	79.5	78.5	75.7	32.9	Bullish
ACC	1807.7	1837.0	1822.3	1813.7	1799.0	1790.4	1840.3	1813.2	54.2	Bearish
AMBUJACEM	581.0	584.4	582.7	580.3	578.6	576.1	586.2	593.3	60.4	Bearish
ADANIPOWER	605.7	619.2	612.4	601.3	594.5	583.4	600.4	587.5	51.3	Bullish
ADANIENSOL	805.8	815.7	810.7	802.9	797.9	790.1	814.7	803.9	49.7	Bullish
ADANIGREEN	964.1	979.4	971.8	965.1	957.4	950.7	967.5	961.8	40.0	Bullish
ADANIENT	2302.9	2365.5	2334.2	2317.1	2285.8	2268.7	2356.1	2352.6	31.3	Bearish
ADANIPORTS	1340.4	1357.0	1348.7	1340.6	1332.3	1324.2	1356.7	1353.6	54.2	Bearish
ASHOKLEY	131.0	132.6	131.8	131.1	130.3	129.6	131.9	124.1	49.6	Bullish
ALKEM	5415.5	5505.5	5460.5	5429.0	5384.0	5352.5	5409.7	5130.1	67.3	Bullish
APLAPOLLO	1645.2	1673.1	1659.2	1645.1	1631.2	1617.1	1640.5	1594.4	56.5	Bullish
APOLLOHOSP	7851.0	7991.3	7921.2	7879.8	7809.7	7768.3	7881.3	7524.6	75.2	Bullish
ASIANPAINT	2492.9	2543.6	2518.3	2497.1	2471.8	2450.6	2542.7	2483.1	76.3	Bullish
APOLLOTYRE	465.8	475.0	470.4	466.7	462.1	458.4	466.0	450.1	45.5	Bullish
AUROPHARMA	1067.4	1088.7	1078.1	1065.2	1054.6	1041.7	1059.0	1083.7	45.9	Bearish
ASTRAL	1414.3	1432.8	1423.6	1417.1	1407.9	1401.4	1404.1	1384.4	47.0	Bullish
ATGL	631.3	642.6	636.9	627.5	621.9	612.5	625.2	611.1	41.1	Bullish
AUBANK	749.6	762.2	755.9	747.0	740.7	731.7	752.3	744.0	66.5	Bullish
AXISBANK	1070.0	1077.2	1073.6	1070.9	1067.3	1064.6	1076.6	1071.5	78.0	Bearish
BAJFINANCE	900.8	912.2	906.5	902.3	896.6	892.5	896.2	882.9	65.4	Bullish
BAJAJHFL	113.4	114.4	113.9	113.4	112.9	112.3	113.6	113.5	52.7	Bearish
BANDHANBNK	171.5	175.4	173.4	172.3	170.3	169.1	174.0	168.8	48.3	Bullish
BDL	1520.7	1553.2	1536.9	1526.5	1510.2	1499.8	1527.4	1563.9	33.7	Bearish
BHARTIARTL	1930.7	1954.9	1942.8	1928.0	1915.9	1901.1	1926.4	1903.5	66.3	Bullish
BHARTIHEXA	1859.6	1912.2	1885.9	1863.6	1837.3	1815.0	1812.3	1786.9	30.4	Bullish
BEL	372.1	383.1	377.6	374.5	369.0	366.0	374.6	382.8	52.6	Bearish
BHEL	216.5	220.8	218.7	217.4	215.3	214.1	218.8	228.5	34.9	Bearish
BHARATFORG	1139.4	1173.8	1156.6	1140.6	1123.4	1107.4	1152.8	1165.8	62.0	Bearish
BIOCON	360.0	366.1	363.0	360.6	357.5	355.1	360.1	368.1	37.0	Bearish
BAJAJ-AUTO	8750.5	8846.5	8798.5	8716.0	8668.0	8585.5	8747.5	8331.1	49.2	Bullish
BAJAJFINSV	1963.8	1976.3	1970.1	1961.5	1955.3	1946.7	1968.1	1945.4	66.9	Bullish
BAJAJHLDNG	13265.0	13795.0	13530.0	13365.0	13100.0	12935.0	13587.4	13848.2	43.9	Bearish
BANKBARODA	241.1	244.0	242.5	241.5	240.1	239.1	243.3	241.6	61.9	Bearish
BANKINDIA	115.0	116.7	115.8	115.3	114.4	113.9	115.8	113.1	52.9	Bullish
MAHABANK	54.3	55.3	54.8	54.5	54.0	53.7	55.0	55.2	55.4	Bearish
BOSCHLTD	39085.0	39775.0	39430.0	39190.0	38845.0	38605.0	39536.0	39371.3	50.3	Bearish
BPCL	315.8	320.9	318.3	316.4	313.9	312.0	318.7	321.2	58.2	Bearish
BRITANNIA	5550.5	5631.5	5591.0	5568.0	5527.5	5504.5	5578.7	5549.3	57.4	Bullish
BSE	2290.8	2363.4	2327.1	2306.6	2270.3	2249.8	2394.1	2425.9	40.1	Bearish
CANBK	108.8	111.9	110.4	109.4	107.9	107.0	110.8	109.1	59.9	Bearish
CONCOR	544.4	553.5	549.0	546.0	541.4	538.4	551.6	560.1	57.6	Bearish
CGPOWER	677.2	689.7	683.5	679.2	673.0	668.7	677.1	668.9	59.9	Bullish
CHOLAFIN	1509.4	1540.3	1524.9	1514.5	1499.1	1488.7	1520.5	1481.9	54.4	Bullish
CIPLA	1601.2	1616.1	1608.7	1600.3	1592.9	1584.5	1576.4	1542.0	62.6	Bullish
COLPAL	2282.8	2328.3	2305.5	2287.8	2265.0	2247.3	2312.5	2243.1	53.9	Bullish
COALINDIA	380.0	384.5	382.2	378.5	376.3	372.6	380.5	380.5	56.6	Bearish
COCHINSHIP	1683.5	1753.4	1718.4	1697.1	1662.1	1640.8	1703.5	1712.6	41.0	Bearish
COFORGE	1764.0	1813.3	1788.7	1772.8	1748.2	1732.3	1720.2	1690.6	49.9	Bullish

NSE 200 SUPPORT & RESISTANCE

SYMBOL	CLOSE	R2	R1	PIVOT	S1	S2	5 DMA	20 DMA	% Delivery	Trend
DABUR	518.6	524.5	521.6	517.5	514.6	510.5	521.5	518.1	50.2	Bullish
DIVISLAB	6248.5	6366.2	6307.3	6255.7	6196.8	6145.2	6102.5	6240.4	50.6	Bearish
DIXON	17018.0	17488.0	17253.0	17052.0	16817.0	16616.0	16883.4	16605.3	40.1	Bullish
DLF	772.0	782.5	777.2	770.6	765.4	758.8	770.9	771.9	49.7	Bearish
DMART	4725.3	4775.7	4750.5	4725.3	4700.1	4674.9	4701.4	4351.0	78.1	Bullish
DRREDDY	1283.9	1296.3	1290.1	1282.7	1276.5	1269.1	1265.5	1248.1	56.6	Bullish
EICHERMOT	5990.5	6088.8	6039.7	5959.8	5910.7	5830.8	5953.2	5706.7	74.6	Bullish
ESCORTS	3568.8	3664.3	3616.5	3583.3	3535.5	3502.3	3587.7	3448.0	24.6	Bullish
ETERNAL	319.3	327.1	323.2	319.9	315.9	312.6	321.6	310.4	48.6	Bullish
EXIDEIND	400.3	410.0	405.1	398.8	393.9	387.6	397.2	385.4	45.6	Bullish
FEDERALBNK	195.0	199.2	197.1	195.8	193.8	192.5	198.1	198.5	71.2	Bearish
GAIL	175.9	177.7	176.8	175.9	175.0	174.1	176.7	175.2	68.7	Bullish
GODREJCP	1261.7	1279.0	1270.4	1261.2	1252.6	1243.4	1246.4	1223.5	75.4	Bullish
GMRAIRPORT	88.8	90.8	89.8	89.2	88.2	87.7	89.8	90.0	62.9	Bearish
GLENMARK	1956.1	1982.0	1969.1	1951.0	1938.1	1920.0	1940.8	2037.6	53.5	Bearish
GODREJPROP	2068.9	2108.3	2088.6	2075.3	2055.6	2042.3	2045.4	2045.5	27.0	Bearish
GRASIM	2811.4	2853.0	2832.2	2811.9	2791.1	2770.8	2839.9	2777.0	56.5	Bullish
HAVELLS	1562.0	1581.2	1571.6	1561.5	1551.9	1541.8	1561.9	1513.1	67.0	Bullish
HCLTECH	1504.2	1530.2	1517.2	1496.7	1483.7	1463.2	1487.2	1480.3	67.3	Bullish
HDFCAMC	5892.0	5983.0	5937.5	5882.0	5836.5	5781.0	5788.5	5649.6	67.5	Bullish
HDFCBANK	1964.1	1986.6	1975.3	1966.2	1954.9	1945.8	989.9	996.3	70.7	Bearish
HDFCLIFE	787.0	794.7	790.9	788.1	784.3	781.5	792.3	768.5	82.6	Bullish
HEROMOTOCO	5063.8	5143.8	5103.8	5039.9	4999.9	4936.0	5082.6	4667.0	40.6	Bullish
HAL	4457.6	4535.5	4496.5	4474.1	4435.1	4412.7	4465.1	4497.1	56.7	Bearish
HINDALCO	715.9	728.1	722.0	714.8	708.6	701.4	707.0	691.5	51.7	Bullish
HINDPETRO	390.3	393.7	392.0	389.8	388.1	385.9	392.1	404.6	47.9	Bearish
HUDCO	213.1	215.6	214.4	212.6	211.3	209.6	213.3	212.8	46.1	Bullish
HINDUNILVR	2631.6	2657.7	2644.7	2629.9	2616.9	2602.1	2636.8	2538.4	68.9	Bullish
HYUNDAI	2472.4	2559.6	2516.0	2441.5	2397.9	2323.4	2471.4	2250.1	38.6	Bullish
HINDZINC	434.7	445.4	440.1	431.5	426.1	417.5	429.8	426.2	45.0	Bullish
ICICIBANK	1433.2	1442.9	1438.1	1431.0	1426.2	1419.1	1436.5	1448.1	71.4	Bearish
ICICIGI	1919.0	1960.3	1939.7	1921.3	1900.7	1882.3	1943.6	1914.6	56.8	Bullish
IDEA	7.4	7.9	7.7	7.3	7.1	6.7	6.9	6.8	22.1	Bullish
IDFCFIRSTB	70.3	71.0	70.6	70.1	69.7	69.2	70.5	69.6	66.8	Bullish
IGL	210.9	216.3	213.6	210.1	207.4	203.9	206.9	205.2	41.0	Bullish
INDHOTEL	785.6	799.9	792.7	788.5	781.3	777.1	790.4	760.5	54.5	Bullish
INDUSINDBK	770.9	782.6	776.7	769.1	763.2	755.6	772.4	788.6	39.6	Bearish
INDIANB	668.1	677.7	672.9	668.6	663.8	659.5	670.2	651.8	46.1	Bullish
INDIGO	6116.0	6219.0	6167.5	6098.0	6046.5	5977.0	6102.5	5921.4	52.2	Bullish
INDUSTOWER	354.8	361.0	357.9	354.6	351.5	348.2	349.1	349.7	54.0	Bearish
INFY	1532.1	1558.2	1545.2	1525.9	1512.9	1493.6	1490.4	1469.0	66.2	Bullish
NAUKRI	1406.1	1438.7	1422.4	1404.0	1387.7	1369.3	1395.2	1368.3	55.4	Bullish
IOC	140.0	141.0	140.5	139.8	139.3	138.7	141.0	142.5	65.2	Bearish
ICICIPRULI	629.7	635.3	632.5	627.9	625.1	620.5	630.1	620.1	79.4	Bullish
IRB	45.1	46.5	45.8	44.7	44.0	42.9	44.6	44.9	46.0	Bearish
IRCTC	721.9	730.0	725.9	723.5	719.4	716.9	726.0	726.4	63.7	Bearish
IREDA	147.7	150.7	149.2	148.0	146.5	145.2	148.0	146.7	39.3	Bullish
IRFC	124.4	126.6	125.5	124.8	123.7	123.1	125.7	127.2	36.9	Bearish
ITC	399.4	403.0	401.2	398.7	396.9	394.4	403.7	410.4	67.8	Bearish
JIOFIN	319.7	324.1	321.9	320.1	317.9	316.1	324.8	325.7	46.9	Bearish

NSE 200 SUPPORT & RESISTANCE

SYMBOL	CLOSE	R2	R1	PIVOT	S1	S2	5 DMA	20 DMA	% Delivery	Trend
JINDALSTEL	996.2	1009.9	1003.0	997.6	990.7	985.3	1005.0	988.7	60.4	Bullish
JSWSTEEL	1057.8	1069.7	1063.7	1056.8	1050.8	1043.9	1068.0	1053.7	62.2	Bullish
JSWENERGY	521.5	531.0	526.2	521.0	516.2	511.0	525.1	527.5	55.1	Bearish
JUBLFOOD	647.8	672.6	660.2	638.4	626.0	604.1	632.5	638.3	41.0	Bearish
KALYANKJIL	511.2	517.3	514.2	511.9	508.8	506.5	510.3	553.6	49.1	Bearish
CUMMINSIND	3880.5	3954.4	3917.5	3893.8	3856.9	3833.2	3850.6	3710.6	64.9	Bullish
KOTAKBANK	1983.3	2008.4	1995.8	1986.3	1973.7	1964.2	2007.0	1987.7	75.7	Bearish
KPITTECH	1203.0	1251.0	1227.0	1213.5	1189.5	1176.0	1205.6	1211.7	33.2	Bearish
LICHSGFIN	561.1	569.5	565.3	562.7	558.5	555.8	572.5	577.6	55.9	Bearish
LICI	894.1	900.6	897.3	892.4	889.2	884.3	894.5	895.5	51.0	Bearish
LODHA	1264.4	1293.3	1278.9	1270.4	1256.0	1247.5	1275.4	1238.9	54.9	Bullish
LUPIN	1966.3	1997.1	1981.7	1970.5	1955.1	1943.9	1962.5	1940.4	55.5	Bullish
LT	3603.1	3635.4	3619.2	3601.8	3585.6	3568.2	3603.4	3617.3	64.7	Bearish
LTF	217.7	225.3	221.5	219.5	215.7	213.6	219.1	206.3	43.2	Bullish
LTIM	5293.0	5398.3	5345.7	5297.3	5244.7	5196.3	5208.8	5110.1	33.3	Bullish
MANKIND	2557.1	2654.2	2605.7	2577.8	2529.3	2501.4	2552.6	2532.8	62.3	Bullish
MFSL	1651.2	1691.9	1671.5	1651.5	1631.1	1611.1	1646.0	1560.9	64.1	Bullish
MAXHEALTH	1221.4	1269.7	1245.5	1228.4	1204.2	1187.1	1232.2	1249.0	49.2	Bearish
MAZADOCK	2755.7	2826.4	2791.0	2763.6	2728.2	2700.8	2748.8	2745.3	28.9	Bullish
M&M	3398.9	3450.4	3424.7	3403.2	3377.5	3356.0	3385.3	3262.8	66.4	Bullish
M&MFIN	266.1	270.6	268.3	265.7	263.4	260.7	264.0	258.1	68.7	Bullish
MOTILALOFS	925.7	946.9	936.3	927.4	916.8	907.9	944.9	926.1	49.1	Bearish
MOTHERSON	95.0	97.1	96.0	95.2	94.1	93.3	97.1	96.0	47.2	Bearish
MPHASIS	2917.7	2996.0	2956.9	2928.4	2889.3	2860.8	2839.8	2752.0	30.2	Bullish
MARICO	722.4	739.6	731.0	725.7	717.1	711.8	734.5	716.1	71.8	Bullish
MRF	146745.0	149045.0	147895.0	147050.0	145900.0	145055.0	147540.0	145333.3	54.6	Bullish
MARUTI	14452.0	14601.3	14526.7	14403.3	14328.7	14205.3	14310.4	13090.6	62.2	Bullish
MUTHOOTFIN	2693.7	2732.6	2713.2	2696.9	2677.5	2661.2	2696.2	2646.4	59.5	Bullish
NATIONALUM	190.4	194.2	192.3	191.1	189.2	188.0	190.9	188.2	38.8	Bullish
NESTLEIND	1153.0	1174.2	1163.6	1156.2	1145.6	1138.2	1169.4	1129.0	54.9	Bullish
NHPC	79.6	81.7	80.6	80.1	79.0	78.4	81.4	83.1	64.1	Bearish
NMDC	70.7	71.8	71.2	70.8	70.2	69.7	70.9	71.1	49.8	Bearish
NTPC	337.9	343.1	340.5	338.8	336.1	334.4	338.1	335.8	61.7	Bullish
NTPCGREEN	101.8	105.9	103.8	102.5	100.4	99.0	103.4	103.5	66.1	Bearish
NYKAA	229.5	237.4	233.4	229.2	225.3	221.0	226.3	214.3	35.0	Bullish
OBEROIRLTY	1672.7	1699.6	1686.1	1669.1	1655.6	1638.6	1659.2	1628.9	50.6	Bullish
OFSS	8750.5	9045.8	8898.2	8784.3	8636.7	8522.8	8686.7	8575.5	24.3	Bullish
OIL	409.4	414.0	411.7	408.5	406.2	403.0	409.1	422.4	52.8	Bearish
OLAELEC	48.6	51.0	49.8	48.2	47.0	45.5	48.5	42.7	22.7	Bullish
ONGC	236.8	238.5	237.6	236.6	235.8	234.8	237.4	237.1	60.1	Bearish
PAGEIND	46850.0	48373.3	47611.7	46548.3	45786.7	44723.3	45884.0	45841.5	43.7	Bullish
PATANJALI	1805.7	1824.3	1815.0	1808.1	1798.8	1791.9	1803.8	1824.4	39.9	Bearish
PAYTM	1276.1	1303.5	1289.8	1277.9	1264.2	1252.3	1252.1	1134.9	42.8	Bullish
PRESTIGE	1649.1	1676.4	1662.8	1650.9	1637.3	1625.4	1635.7	1624.8	31.7	Bullish
PHOENIXLTD	1587.9	1617.8	1602.9	1584.5	1569.6	1551.2	1561.6	1488.4	55.3	Bullish
PIIND	3896.2	3959.8	3928.0	3886.0	3854.2	3812.2	3838.6	3975.0	54.2	Bearish
PIDILITIND	3107.0	3157.1	3132.0	3111.0	3085.9	3064.9	3090.6	3012.9	53.4	Bullish
PETRONET	273.6	279.6	276.6	274.4	271.4	269.2	278.4	280.1	53.0	Bearish
PNB	105.2	106.8	106.0	105.6	104.8	104.3	106.5	106.0	35.3	Bearish
POLICYBZR	1901.9	1941.7	1921.8	1902.1	1882.2	1862.5	1911.3	1829.6	49.6	Bullish

NSE 200 SUPPORT & RESISTANCE

SYMBOL	CLOSE	R2	R1	PIVOT	S1	S2	5 DMA	20 DMA	% Delivery	Trend
POLYCAB	7071.5	7192.8	7132.2	7094.8	7034.2	6996.8	7106.3	6932.9	51.6	Bullish
PFC	399.3	402.5	400.9	399.7	398.1	396.8	402.6	409.4	57.5	Bearish
PREMIERENE	1003.9	1034.0	1018.9	1004.0	988.9	974.0	1019.9	1015.9	48.5	Bearish
PERSISTENT	5450.0	5575.3	5512.7	5446.8	5384.2	5318.3	5349.6	5216.8	42.4	Bullish
POWERGRID	284.2	286.1	285.1	283.7	282.7	281.3	285.6	287.5	65.8	Bearish
RECLTD	375.1	379.7	377.4	376.1	373.8	372.5	378.9	386.7	53.2	Bearish
RELIANCE	1412.6	1426.4	1419.5	1412.6	1405.7	1398.8	1415.9	1396.8	54.8	Bullish
RVNL	321.7	329.2	325.4	323.2	319.5	317.3	326.5	338.9	43.7	Bearish
SAIL	122.8	124.3	123.6	122.9	122.2	121.5	123.0	123.2	31.5	Bearish
SBICARD	822.1	832.5	827.3	821.8	816.5	811.0	821.3	807.8	49.8	Bullish
SBILIFE	1846.8	1869.9	1858.3	1850.9	1839.3	1831.9	1859.1	1846.3	71.0	Bullish
SBIN	816.5	823.4	819.9	817.1	813.6	810.8	823.6	811.9	63.2	Bullish
SHRIRAMFIN	620.9	627.8	624.3	620.4	616.9	613.0	619.8	623.2	64.2	Bearish
SUPREMEIND	4631.2	4706.2	4668.7	4627.4	4589.9	4548.6	4597.0	4359.0	45.0	Bullish
SIEMENS	3164.6	3236.3	3200.5	3174.1	3138.3	3111.9	3164.7	3103.8	46.0	Bullish
SJVN	99.4	100.9	100.1	99.6	98.8	98.3	97.7	94.8	37.2	Bullish
SOLARINDS	14654.0	15044.7	14849.3	14744.7	14549.3	14444.7	14648.4	14645.7	35.5	Bullish
SONACOMS	451.2	459.3	455.2	451.0	446.9	442.7	449.8	449.8	56.3	Bullish
SHREECEM	30015.0	30551.7	30283.3	30111.7	29843.3	29671.7	30444.0	30554.5	57.8	Bearish
SRF	2911.7	2975.9	2943.8	2921.9	2889.8	2867.9	2919.2	2952.8	72.6	Bearish
SUZLON	57.4	59.6	58.5	57.9	56.8	56.3	58.7	61.7	49.9	Bearish
SUNPHARMA	1656.7	1676.9	1666.8	1650.4	1640.3	1623.9	1639.7	1644.0	71.1	Bearish
SWIGGY	425.7	438.2	431.9	426.0	419.7	413.8	424.0	404.6	47.5	Bullish
TATASTEEL	159.6	161.2	160.4	159.5	158.7	157.8	160.2	159.1	56.9	Bullish
TATACONSUM	1081.6	1096.2	1088.9	1084.0	1076.7	1071.8	1089.0	1068.1	52.2	Bullish
TATATECH	685.2	697.5	691.3	687.7	681.5	677.8	685.4	681.9	37.9	Bullish
TATACOMM	1594.8	1631.3	1613.0	1599.5	1581.2	1567.7	1620.5	1669.3	94.1	Bearish
TCS	3140.6	3198.1	3169.4	3123.2	3094.5	3048.3	3082.4	3052.0	50.9	Bullish
TECHM	1527.1	1558.6	1542.9	1523.9	1508.2	1489.2	1514.8	1484.0	50.9	Bullish
TATAELXSI	5546.5	5682.5	5614.5	5570.0	5502.0	5457.5	5651.4	5819.5	30.8	Bearish
TIINDIA	3060.0	3134.0	3097.0	3075.0	3038.0	3016.0	3112.4	2977.3	45.5	Bullish
TORNTPOWER	1282.5	1304.3	1293.4	1279.1	1268.2	1253.9	1287.8	1318.6	41.8	Bearish
TATAPOWER	383.3	390.7	387.0	384.7	381.0	378.7	387.3	388.8	48.9	Bearish
TRENT	5423.0	5519.0	5471.0	5437.5	5389.5	5356.0	5448.5	5306.0	56.9	Bullish
TORNTPHARM	3674.5	3722.1	3698.3	3676.2	3652.4	3630.3	3664.5	3644.7	64.3	Bullish
TITAN	3651.4	3699.6	3675.5	3645.5	3621.4	3591.4	3610.4	3469.9	70.4	Bullish
TATAMOTORS	686.8	693.9	690.4	685.3	681.8	676.7	688.5	667.7	51.1	Bullish
TVSMOTOR	3284.7	3345.7	3315.2	3287.5	3257.0	3229.3	3268.4	3023.1	65.9	Bullish
UNIONBANK	133.0	137.1	135.1	134.0	131.9	130.8	135.8	133.1	63.9	Bearish
UNITDSPR	1311.3	1346.2	1328.8	1317.6	1300.2	1289.0	1328.5	1317.4	61.4	Bearish
UPL	722.8	753.3	738.0	725.8	710.5	698.3	714.5	704.7	43.5	Bullish
ULTRACEMCO	12606.0	12806.0	12706.0	12631.0	12531.0	12456.0	12760.4	12422.1	64.2	Bullish
VBL	516.0	521.9	519.0	515.9	513.0	509.9	514.6	509.0	63.6	Bullish
VEDL	450.3	456.1	453.2	448.6	445.7	441.2	447.4	437.5	68.6	Bullish
VMM	148.9	152.8	150.8	149.2	147.3	145.7	149.4	143.7	61.5	Bullish
VOLTAS	1357.4	1382.8	1370.1	1359.1	1346.4	1335.4	1364.4	1321.8	56.4	Bullish
WAAREEENER	3151.1	3254.5	3202.8	3142.9	3091.2	3031.3	3150.4	3093.5	28.1	Bullish
WIPRO	253.8	260.6	257.2	253.9	250.5	247.2	250.0	246.2	29.2	Bullish
YESBANK	19.6	20.5	20.0	19.8	19.3	19.1	19.4	19.0	37.5	Bullish
ZYDUSLIFE	1023.2	1053.1	1038.1	1014.5	999.5	975.9	994.1	973.3	47.9	Bullish

Disclosure & Disclaimer :

HDFC Securities Limited (HSL) is a SEBI Registered Research Analyst having registration no. INH000002475.

This report has been prepared by HDFC Securities Ltd and is solely for information of the recipient only. The report must not be used as a singular basis of any investment decision. The views herein are of a general nature and do not consider the risk appetite or the particular circumstances of an individual investor; readers are requested to take professional advice before investing. "This report may have been refined using AI tools to enhance clarity and readability."

Nothing in this document should be construed as investment advice. Each recipient of this document should make such investigations as they deem necessary to arrive at an independent evaluation of an investment in securities of the companies referred to in this document (including merits and risks) and should consult their own advisors to determine merits and risks of such investment. The information and opinions contained herein have been compiled or arrived at, based upon information obtained in good faith from sources believed to be reliable. Such information has not been independently verified and no guaranty, representation of warranty, express or implied, is made as to its accuracy, completeness or correctness. All such information and opinions are subject to change without notice. Descriptions of any company or companies or their securities mentioned herein are not intended to be complete. HSL is not obliged to update this report for such changes. HSL has the right to make changes and modifications at any time.

This report is not directed to, or intended for display, downloading, printing, reproducing or for distribution to or use by, any person or entity who is a citizen or resident or located in any locality, state, country or other jurisdiction where such distribution, publication, reproduction, availability or use would be contrary to law or regulation or what would subject HSL or its affiliates to any registration or licensing requirement within such jurisdiction.

If this report is inadvertently sent or has reached any person in such country, especially, United States of America, the same should be ignored and brought to the attention of the sender. This document may not be reproduced, distributed or published in whole or in part, directly or indirectly, for any purposes or in any manner.

Foreign currencies denominated securities, wherever mentioned, are subject to exchange rate fluctuations, which could have an adverse effect on their value or price, or the income derived from them. In addition, investors in securities such as ADRs, the values of which are influenced by foreign currencies effectively assume currency risk. It should not be considered to be taken as an offer to

sell or a solicitation to buy any security.

This document is not, and should not, be construed as an offer or solicitation of an offer, to buy or sell any securities or other financial instruments. This report should not be construed as an invitation or solicitation to do business with HSL. HSL may from time to time solicit from, or perform broking, or other services for, any company mentioned in this mail and/or its attachments.

HSL and its affiliated company(ies), their directors and employees may; (a) from time to time, have a long or short position in, and buy or sell the securities of the company(ies) mentioned herein or (b) be engaged in any other transaction involving such securities and earn brokerage or other compensation or act as a market maker in the financial instruments of the company(ies) discussed herein or act as an advisor or lender/borrower to such company(ies) or may have any other potential conflict of interests with respect to any recommendation and other related information and opinions.

HSL, its directors, analysts or employees do not take any responsibility, financial or otherwise, of the losses or the damages sustained due to the investments made or any action taken on basis of this report, including but not restricted to, fluctuation in the prices of shares and bonds, changes in the currency rates, diminution in the NAVs, reduction in the dividend or income, etc.

HSL and other group companies, its directors, associates, employees may have various positions in any of the stocks, securities and financial instruments dealt in the report, or may make sell or purchase or other deals in these securities from time to time or may deal in other securities of the companies / organizations described in this report. As regards the associates of HSL please refer the website.

HSL or its associates might have managed or co-managed public offering of securities for the subject company or might have been mandated by the subject company for any other assignment in the past twelve months.

Please note that HDFC Securities has a proprietary trading desk. This desk maintains an arm's length distance with the Research team and all its activities are segregated from Research activities. The proprietary desk operates independently, potentially leading to investment decisions that may deviate from research views.

HSL or its associates might have received any compensation from the companies mentioned in the report during the period preceding twelve months from the date of this report for services in respect of managing or co-managing public offerings, corporate finance, investment banking or merchant banking, brokerage services or other advisory service in a merger or specific transaction in the normal course of business.

HSL or its analysts did not receive any compensation or other benefits from the companies mentioned in the report or third party in connection with preparation of the research report. Accordingly, neither HSL nor Research Analysts have any material conflict of interest at the time of publication of this report. Compensation of our Research Analysts is not based on any specific merchant banking, investment banking or brokerage service transactions. HSL may have issued other reports that are inconsistent with and reach different conclusion from the information presented in this report.

Research entity has not been engaged in market making activity for the subject company. Research analyst has not served as an officer, director or employee of the subject company. We have not received any compensation/benefits from the subject company or third party in connection with the Research Report.

HDFC securities Limited, I Think Techno Campus, Building - B, "Alpha", Office Floor 8, Near Kanjurmarg Station, Opp. Crompton Greaves, Kanjurmarg (East), Mumbai 400 042 Phone: (022) 3075 3400 Fax: (022) 2496 5066

Compliance Officer: Murli V Karkera Email: complianceofficer@hdfcsec.com Phone: (022) 3045 3600

For grievance redressal contact Customer Care Team Email: customercare@hdfcsec.com Phone: (022) 3901 9400

HDFC Securities Limited, SEBI Reg. No.: NSE, BSE, MSEI, MCX: INZ000186937; AMFI Reg. No. ARN: 13549; PFRDA Reg. No. POP: 11092018; IRDA Corporate Agent License No.: CA0062; SEBI Research Analyst Reg. No.: INH000002475; SEBI Investment Adviser Reg. No.: INA000011538; CIN - U67120MH2000PLC152193

Investment in securities market are subject to market risks. Read all the related documents carefully before investing.

Mutual Funds Investments are subject to market risk. Please read the offer and scheme related documents carefully before investing.

Registration granted by SEBI, membership of BASL (in case of IAs) and certification from NISM in no way guarantee performance of the intermediary or provide any assurance of returns to investors.