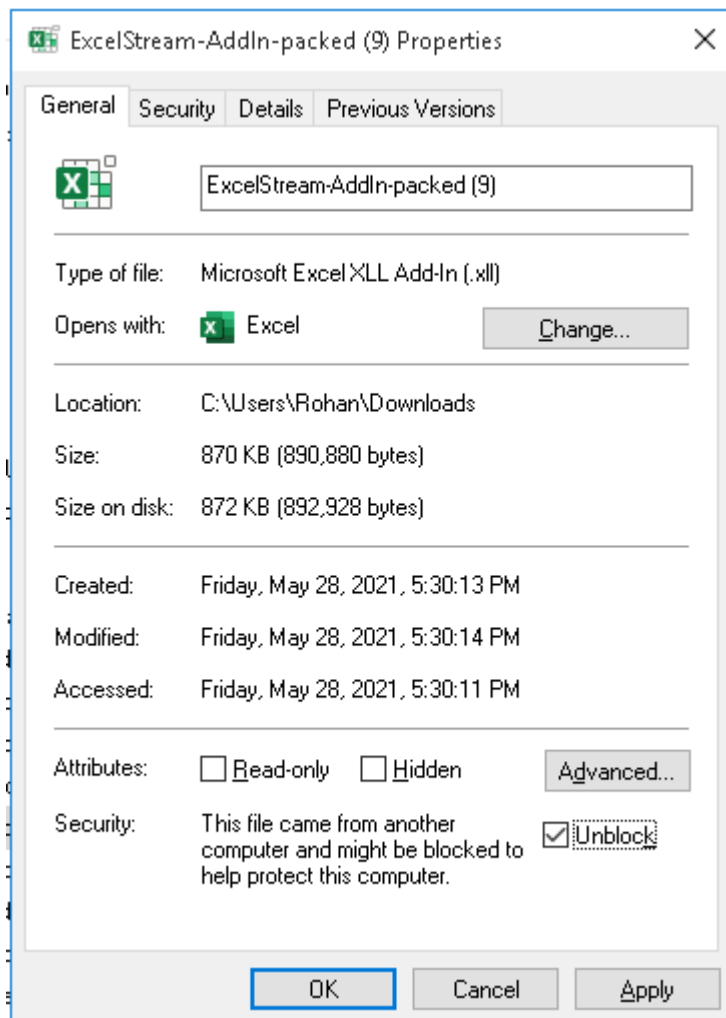


Pre-requisites to perform before opening “Link to Excel” feature in watchlist:

- Link to excel to work on Windows 7 and above 32-64 bit OS, would not work on Mac and any other OS's.
- Would need .Net Framework runtime on the client machine (this is mostly pre installed in case of latest OS's).
- It would work with Microsoft Excel add in on MS Excel 2007 (32 and 64 bit version) and above.
- It will require 4.5 and above version .net Framework
- If using in office network, and antivirus is also running in; then the UAT and Prod url's to be excluded in the exclusion rule.

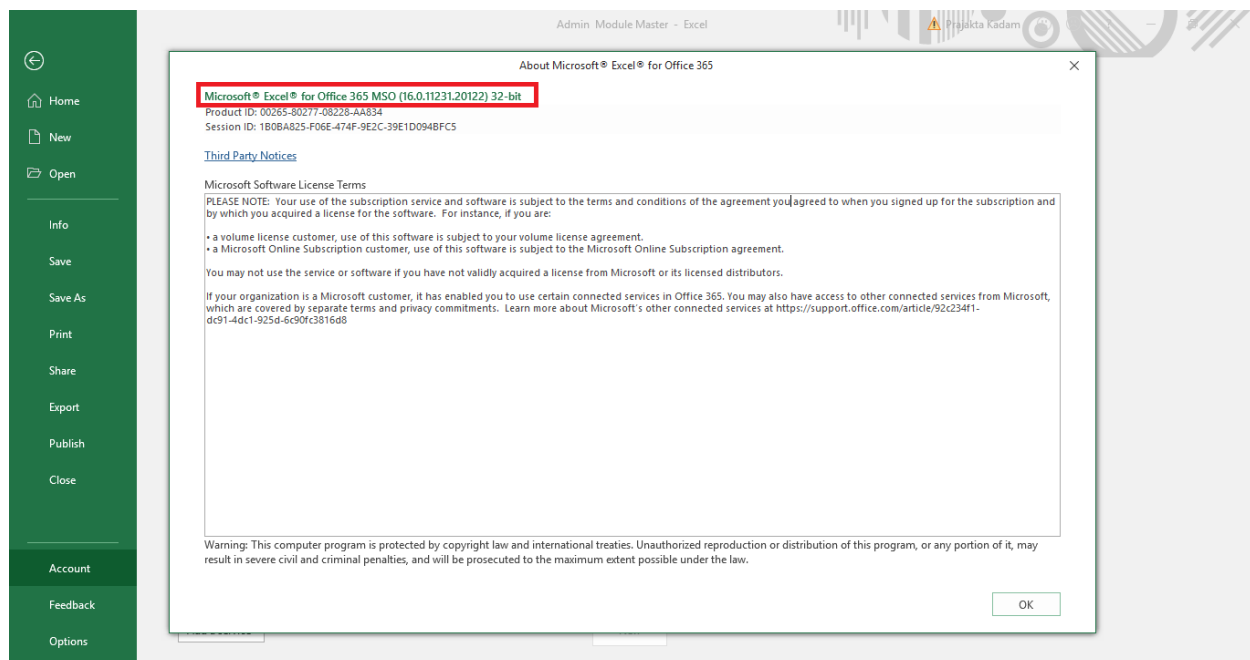
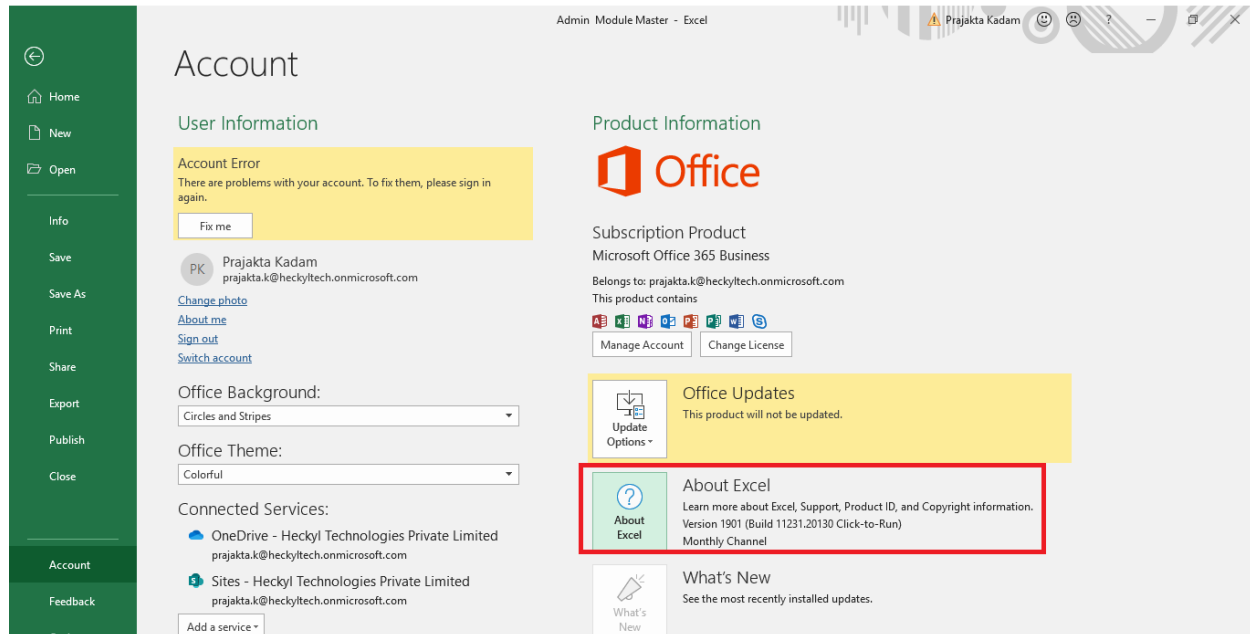
1) Macros would not work in read only mode.

Right click properties and tick unblock option in the below Security option.



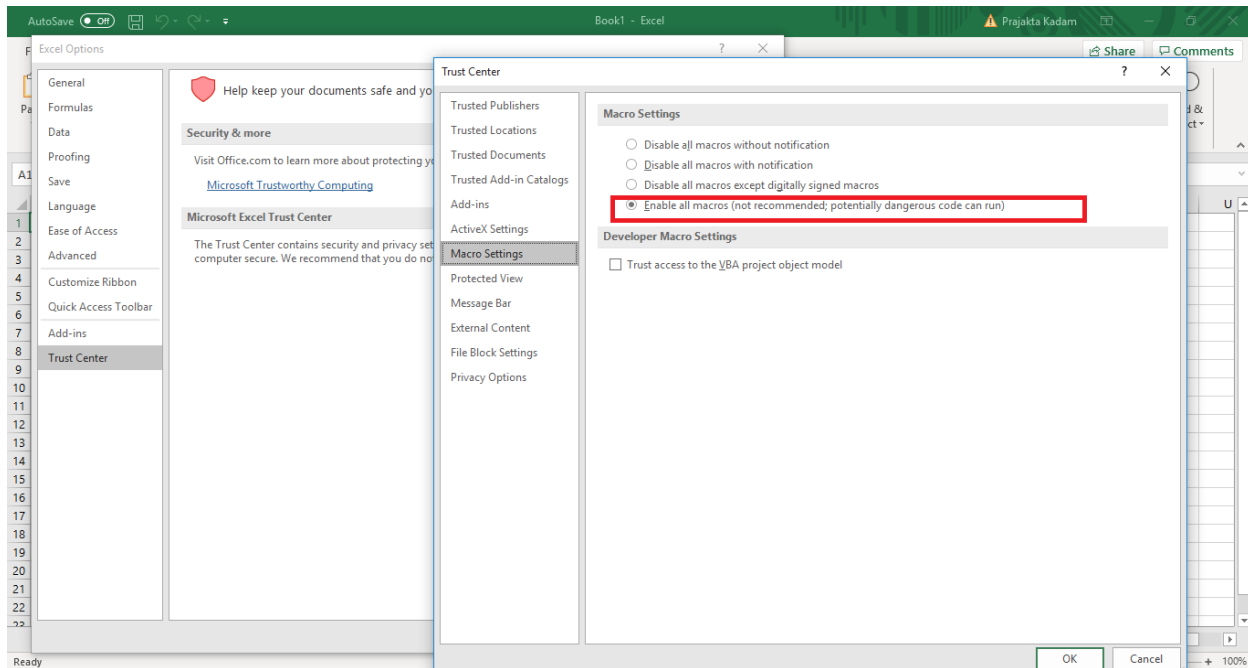
2) Check MS Excel version is it 32 Bit or 64 Bit..

- 1.1 Click the File tab.
- 1.2 Click on Account.
- 1.3 Click on "About Excel" and find version on top.
- 1.4 Microsoft Excel v2007 (32 bit 64 bit) and above is supported.
- 1.5 Open Office and Mac OS X - Microsoft Excel is not supported.



3) Enable all macros from Excel setting.

- 2.1 Click the File tab.
- 2.2 Click Options.
- 2.3 Click Trust Center, and then click Trust Center **Settings**.
- 2.4 In the Trust Center, click **Macro Settings**.
- 2.5 Click on “Enable all macros” and click on “Ok”.



4) Other Macro Setting in excel.

- 2.1 Click the File tab.
- 2.2 Click Options.
- 2.3 Click Trust Center, and then click Trust Center **Settings**.
- 2.4 In the Trust Center, click **Macro Settings**.
- 2.5 Check “Trust access to the VBA project object model” option.

